

The GardenPro 12 Volt Backpack Sprayer Specification Sheet



SVB0016L0024

16 litre Rechargeable Knapsack Sprayer

Unit Specifications

Item	Description	Details
Tank	16 Litre	16 Litre tank capacity polypropylene construction UV stabilised
Pump	Micro diaphragm pump	2.4 L/min, 70psi pump with speed control, working pressure 2.0 – 4.5bar, pump pressure limit 4.5 – 5.0bar
Filter	Basket Filter	Polypropylene mesh basket filter 140mmØ, 45mm deep
Spray Lance	AHL006	Overall length 780mm, max pressure 6bar 90psi
Spray Hose	2m x 10mm	Kink resistant agricultural spray hose
Lid	ARLP120	120mm screw lid with breather
Battery	Rechargeable 12V	Sealed lead acid battery 6-FM-7 12V7AH, fully enclosed, maintenance free, non-spillable, charge time 8 hours from completely flat, will pump 320 litres on full charge (ie; 20 tank loads)
Charger	Class 2 battery charger	Input AC100 – 240V – 50/60HZ, Output – DC12V 1.3A, Three stage charging type constant current, constant voltage and maintenance. With short circuit, over current, reverse connection protection
Volt Meter		High precision volt meter with low battery alarm circuit. Alarm activates when battery voltage falls below 10.8 – 10.5V
Nozzles	Conical spray tip fitted with extra spray tips supplied	Conical spray tip, flat fan spray, 4 hole adjustable spray tip, dual conical spray tip
Straps	Adjustable	Adjustable padded straps & backrest
Dimensions		510mm (H) x 300mm (L) x 200mm (W)
Weight		7kgs dry weight

1

The GardenPro 12 Volt Backpack Sprayer Specification Sheet

Features

- 16 Litre capacity tank, ergonomically designed for maximum carrier comfort
- Padded shoulder straps and backrest reduces user fatigue
- Spray flow rate control for spray accuracy and reduced chemical wastage
- Over two hours of continuous spraying from a rechargeable 12 volt battery
- Quick charge check with our integrated volt meter

- No more frustrating tangles with our kink resistant hose
- Lance clip ensures neat and tidy unit storage
- Double filtration system prevents time wasting blockages
- Reliable and effective 2.4l/min 70psi pump for maximum spray capacity
- On-off switch control with fuse protection
- Every sprayer supplied with battery charging kit
- See liquid level at a glance with our tank gradations



12 volt battery charger



Adjustable padded straps & backrest



Volt meter - check charge level easily



On/Off Switch

Knapsack Sprayers are Supplied with 3 Extra Spray Tips



Conical Spray Tip (Fitted to lance)

4-hole Adjustable Spray Tip

Flat Fan Spray

Dual Conical Spray Tip

Options

GardenPro Trolley Only - ATK0016L

GardenPro Knapsack & Trolley - SVB0016L0024T



Nozzle Performance

Spraying Nozzle Type	Pressure Bar	Flow L/min
Cone spraying nozzle	3.0-4.5	0.70-0.90
Double spraying nozzle	2.5-4.0	1.30-1.60
Fan spraying nozzle	0.20-0.40	0.60-1.10
Four hole adjustable spraying nozzle	0.20-0.40	0.60-1.10

2

Compatible with these accessories



AHL003T - Telescopic Extension Gives Extra Reach



ATA00E - Quadruple Nozzle Boom c/w Cone Spray Nozzles 1.5m



ATA00EF - Quadruple Nozzle Boom c/w Fan Spray Nozzles 1.5m



ATA00F - Elbow for Fan Nozzle



ATA00HC - Flexible Double Nozzle c/w Adjustable Cone Spray Nozzles



ATA00B - Rectangular hood



ATA00RF - Extendible Double Nozzle Boom



ATA00G - L.U. Elbow with Low Volume Herbicide Nozzle



ATA00C - Conical hood



ATA00HF - Flexible Double Nozzle c/w Fan Spray Nozzles

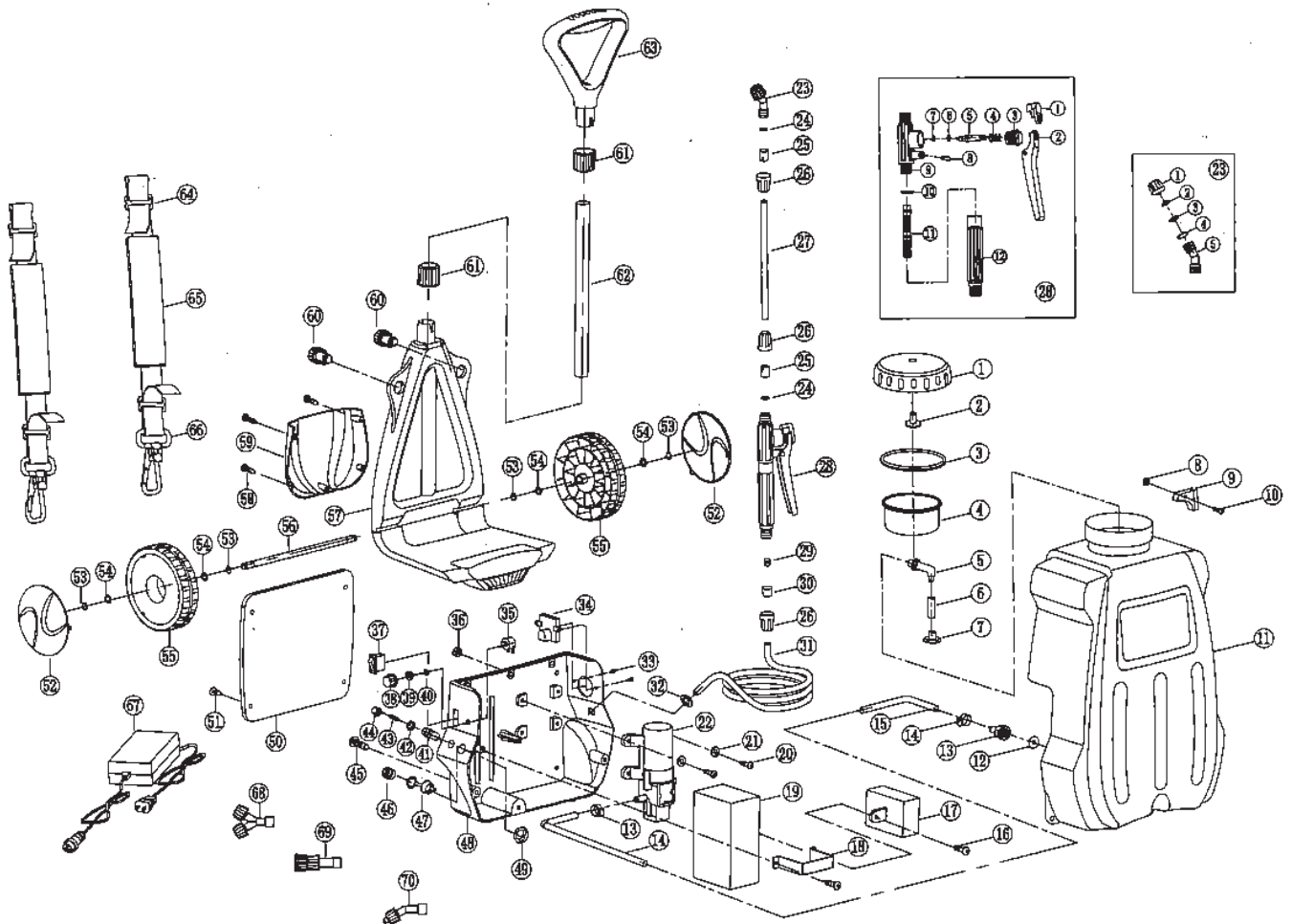
Freecall 1800 011 000
www.rapidspray.net



The GardenPro 12 Volt Backpack Sprayer Specification Sheet

Parts Breakdown

– GardenPro 12 volt Backpack Sprayer SVB0016L0024 – ATK0016L



The GardenPro 12 Volt Backpack Sprayer

Specification Sheet

Parts List – SVB0016L0024 – ATK0016L

No.	Part Name	Per. Set
1	Spray tank cap	1
2	Inlet valve	1
3	Seal ring	1
4	Big strainer	1
5	Inlet bend	1
6	Hose	1
7	Small strainer	1
8	Hex nut M4	1
9	Spray boom clamp	1
10	Cross recessed pan head screw M4x12	1
11	Spray tank	1
12	O-ring Ø20.6x3	1
13	Rubber tube joint	1
14	Pipe-clip 10–16	3
15	Inlet pipe	1
16	Cross recessed pan head tapping screw ST4.8X25	2
17	Control module	1
18	Battery 12v7AH	1
20	Cross recessed pan head screw M5x15	4
21	Flat washer	4
22	Diaphragm pump	1
23	Cone spray head	1
23-1	Spray head cap	1
23-2	Cone spray sheet	1
23-3	Split sheet	1
23-4	Seal gasket Ø16 x Ø11 x 2	1
23-5	Bend	1
24	Spray boom O-ring Ø15x3	2
25	Fastening sleeve	2
26	Spray boom nut	3
27	Spray boom	1
28	Water switch	1
28-1	Limit cap	1
28-2	Switch bar	1
28-3	Switch nut	1
28-4	Switch spring	1
28-5	Valve plug	1
28-6	Valve plug O-ring Ø9.5 x 1.9	1
28-7	Seal ring Ø8.2 x Ø4 x 2.5	1
28-8	Switch pin	1
28-9	Switch body	1
28-10	O-ring Ø20.6 x 2.65	1
28-11	Switch strainer	1

No.	Part Name	Per. Set
28-12	Handle	1
29	Flared sheath	1
30	Rubber hose sheath	1
31	Rubber hose	1
32	Jacket	1
33	Counter sunk head tapping screws ST2.9 x 14	2
34	Voltmeter	1
35	Adjustable potentiometer	1
36	Hex nut M5	4
37	Power switch	1
38	Pressure regulating throb	1
39	Potentiometer nut	1
40	Flat washer of potentiometer	1
41	Fuse holder	1
42	Hexagon thin nut	1
43	Fuse Ø5*20 5A	1
44	Fuse cap	1
45	Cross recessed pan head screw M6 x 12	6
46	Charging socket	1
47	Water shield	1
48	End cover	1
49	Socket nut	1
50	Back pad	1
51	Back pad buckle	4
52	Wheel cover	2
57	Trailer frame	1
53	Circlip for shaft 10	2
54	Flat washer 10	2
55	Wheel	2
56	Wheel shaft	1
58	Cross recessed pan head self-tapping screw ST2.9 x 16	5
59	Tray	1
60	Locking nut	2
61	Locking cap	2
62	Pull rod	1
63	Handle	1
64	Strap lock	4
65	Strap	2
66	Strap hook	2
67	Charger 12U	1
68	30° dual spray head	1
69	Four hole adjustable spray head	1
70	Cone spray head	1