



Pacific Hoists

PACIFIC MAGNETIC LIFTERS

Pacific Magnetic Lifters can be used in various industries for the lifting and moving of steel, engine parts, semi-manufactured goods and moulds, Due to its magnetic force, there is no need to use slings, clamps or other holding devices. This will eliminate the chance of damaging the lifted materials.

Features

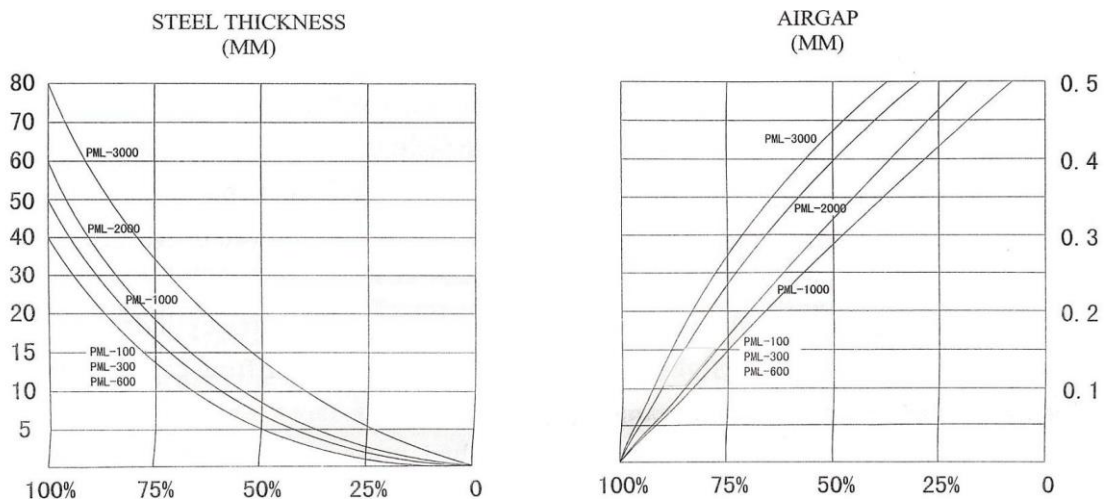
- The magnetic lifter features a breakaway force 3.5 times greater than the working load limit.
- Weight capacities are available from 100kg to 6000kg.
- No electricity needed which will increase product safety. Once operated there is less than 1% residual magnetism.
- The simple switch and safety button design allows for one handed operation.
- Use of plate with high-carbon content will reduce the absorbability to less than 50% of rated capacity. Use of plate with high carbon content is not recommended.



Specifications

MODEL	PML-1	PML-3	PML-6	PML-10	PML-20	PML-30	PML-60
Stock Code	MAG010	MAG030	MAG060	MAG100	MAG200	MAG300	MAG600
Rated Capacity (kg)	100	300	600	1000	2000	3000	6000
Cylindrical Carrying Capacity (kg)	50	150	300	500	800	1200	1800
Max. Break-away Force (kg)	350	1050	2100	3500	7000	10500	21000
Net Weight (kg)	3	10	24	50	125	240	440

Rate of Reduction Graph



MODEL	PML-1	PML-3	PML-6	PML-10	PML-20	PML-30	PML-60
Rated Capacity (kg)	100	300	600	1000	2000	3000	6000
Suitable Thickness of Plate (mm)	> 25	> 35	> 40	> 50	> 60	> 80	> 120
Plate Material	≤45# steel	≤45# steel	≤45# steel	≤45# steel	≤45# steel	≤45# steel	≤45# steel
Carbon Content	Low	Low	Low	Low	Low	Low	Low



The information shown is to be used as a guide only. Specifications are subject to change without notice. All materials handling or lifting jobs should be assessed individually. Pacific Hoists products are NOT to be used for lifting or lowering persons.

HEAD OFFICE

24 Foundry Rd,
Seven Hills NSW 2147 Australia
| P +61 2 8825 6900
| F +61 2 8825 6999
| E sales@pacifichoists.com.au

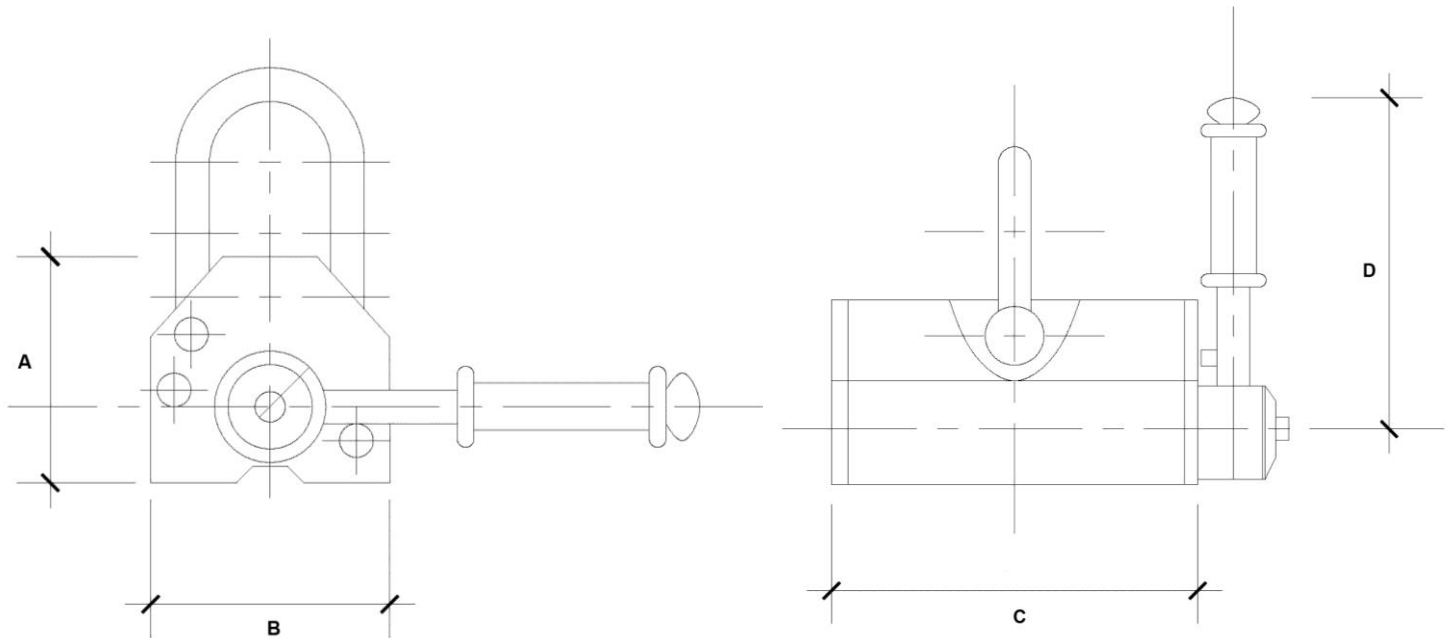
WESTERN AUSTRALIA

Unit 1, 31 Colin Jamieson Drive,
Welshpool WA 6106 Australia
| P +61 8 6253 1000
| F +61 8 9458 9840
| E sales@pacifichoists.com.au

NEW ZEALAND

11 Druces Rd,
Wiri 2104 Auckland New Zealand
| P +64 9 263 5566
| F +64 9 263 5567
| E info@pacifichoists.co.nz

Dimensions (in mm)



MODEL	PML-1	PML-3	PML-6	PML-10	PML-20	PML-30	PML-60
A	67	91	117	163	212	261	355
B	62	92	122	176	234	286	430
C	92	162	232	258	378	458	600
D	126	155	196	285	426	521	



HEAD OFFICE

24 Foundry Rd,
Seven Hills NSW 2147 Australia
| P +61 2 8825 6900
| F +61 2 8825 6999
| E sales@pacifichoists.com.au

WESTERN AUSTRALIA

Unit 1, 31 Colin Jamieson Drive,
Welshpool WA 6106 Australia
| P +61 8 6253 1000
| F +61 8 9458 9840
| E sales@pacifichoists.com.au

NEW ZEALAND

11 Druces Rd,
Wiri 2104 Auckland New Zealand
| P +64 9 263 5566
| F +64 9 263 5567
| E info@pacifichoists.co.nz

The information shown is to be used as a guide only. Specifications are subject to change without notice. All materials handling or lifting jobs should be assessed individually. Pacific Hoists products are NOT to be used for lifting or lowering persons.