

WINLET575 “LIVE PARALLEL FRONT”



The Winlet 575 combines superior lifting capacity and reach with a unique and compact design. Only with the 575 can you handle heavy elements up to 575kg taking it across difficult terrain and through narrow doorways.

The “Live Parallel Front” makes the load mobile in all directions. The fine lifting function in the tower offers hydraulic power to the 200 mm parallel lift and lower, and the 100 mm parallel side-shift.



This gives you more detailed control and is brilliant when panels need to be installed behind obstacles such as scaffolding and safety rails, or for channel and slot glazing.

Hydraulic powered 180 degree rotation of the front and gyro function makes accurate final installation safer and easier than you would have ever thought possible.

The Winlet 575 is extremely agile and easy to move. The powerful front wheel drive effortlessly copes with ramps, platforms and uneven subsoils. The 575 is at home both inside and outside on the building site. Especially tricky assignments can be mastered convincingly and far safer and easier way than with other methods. Overhead mounting is also no problem for the advanced Winlet 575.



Above left: The Winlet 575 can easily lift and manoeuvre long and awkward panels and windows in the tightest and most difficult situations.

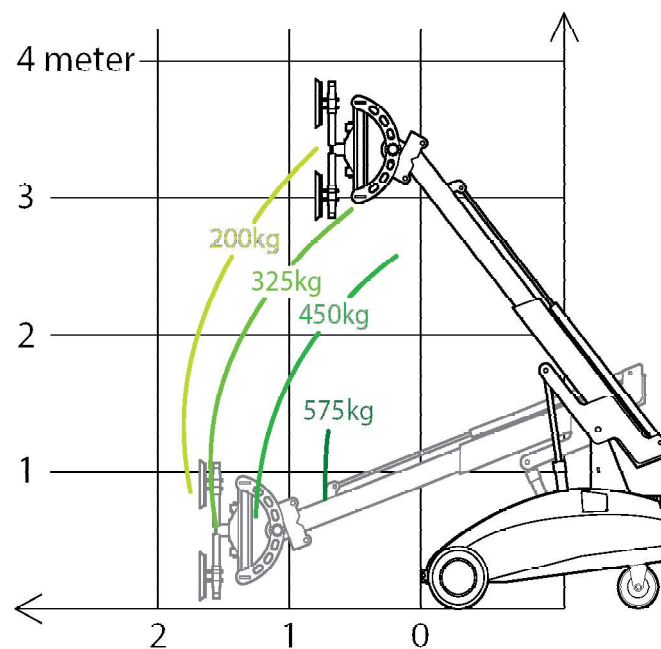
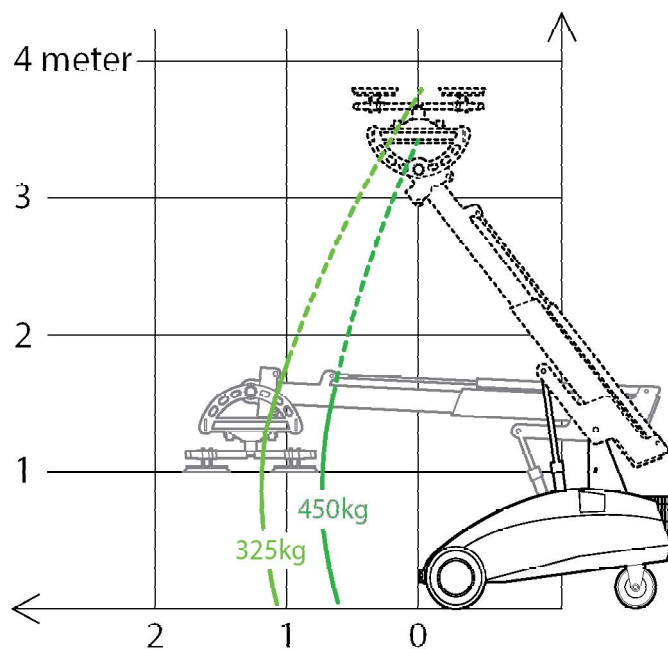
Above middle: The narrow design of the 575 and a lifting capacity of up to 575kg make the lifting and installation of bulky windows and panels a breeze.

Above right: The hydraulic power rotate and gyro function allows the 575 to really come into its own when used in multi-story glazing or reverse-glazing. This enables you to tilt and rotate the entire load while it is out of reach without needing your team to be in harm's way!

WINLET575

Max lifting capacity	575 kg
Max load at max extension	275 kg
Max capacity on side	275 kg
Max lifting height	3600 mm
Max extension	1800 mm
Min extension	700 mm
Weight: including counterweights	1300 kg
: excluding counterweights	1025 kg
External length (chassis only)	1920 mm
External length (incl. head + steering arm)	2680 mm
External width (dual wheels)	1265 mm
External width (single wheels)	880 mm
Hydraulic side offset	75 mm
Fine lift on arm	190 mm
Tilt function	180°
Hydraulic rotation	180°
Suction cups	4 x 350mm
Batteries	2 x 150 aH

(All specs E&OE and subject to change)



Above: Plant trailer allows easy transportation!



Above: Optional dual wheels and stabilizer legs for enhanced stability.

