

MECHANICAL JACKS

SJ Series - Screw Jacks

SIMPLEX



Mechanical Screw Jack Family Shown

Capacity Range▶ 12 - 24 tons
 Stroke Range▶ 3.75 - 14.25 in.
 Minimum Height▶ 9.62 - 23 in.

- ▶ Positive welded stop for safety.
- ▶ Supports loads indefinitely, and will not creep down.
- ▶ Carry handle for ease of transport.
- ▶ Four holes for easy positioning of lever bar.
- ▶ 9° tilt saddle assists in centering load point.

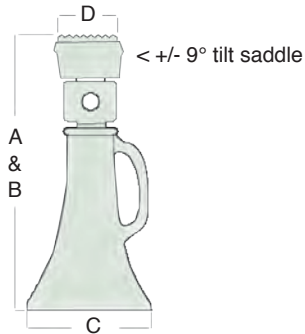
CE COMPLIANT
 Our Jack design specifications meet or exceed ANSI /ASME B30.1 Safety Standards.

RECOMMENDED LEVER BARS

Please refer to page 148 for additional details.

* Lever Bars Sold Separately

Screw Jack Model	Lever Bar Model
<i>SJ156</i>	SLB24
<i>SJ158</i>	SLB24
<i>SJ1512</i>	SLB24
<i>SJ208</i>	SLB35
<i>SJ2010</i>	SLB35
<i>SJ2012</i>	SLB35
<i>SJ258</i>	SLB42
<i>SJ2512</i>	SLB42
<i>SJ2518</i>	SLB42



Model	Sustaining Capacity (tons)	Dimensions (in)				Handle Effort Per Ton (lbs)	Weight (lbs)
		A	B	C	D		
		Closed Height	Stroke	Base Diameter	Cap Diameter		
<i>SJ156</i>	12	9.63	3.75	4.75	2.88	15	10
<i>SJ158</i>		11.63	5.75	5.5	2.88	15	12
<i>SJ1512</i>		15.75	9.75	6.25	2.88	15	16
<i>SJ208</i>	20	11.88	5	6	3.13	15	17
<i>SJ2010</i>		13.75	7	6.5	3.13	15	20
<i>SJ2012</i>		15.75	9	6.75	3.13	15	24
<i>SJ258</i>	24	13	4.25	6.5	3.25	15	28
<i>SJ2512</i>		17	8.25	7.25	3.25	15	37
<i>SJ2518</i>		23	14.25	8.5	3.25	15	52

Mechanical



SCN15 & SC156 Shown

Sustaining Capacity► 12 - 24 tons
 Thread Pitch Range.....► 1.5 - 3 in.
 Weight Range.....► 5.5 - 29.25 lbs.

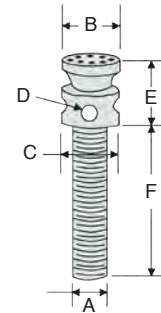
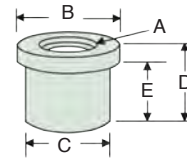
- Holds the load indefinitely without creep down.
- The shoulder nut is placed into piping or other fixed form, and the screw & cap assembly is threaded through it.

RECOMMENDED LEVER BARS

Please refer to page 148 for additional details.

* Lever Bars Sold Separately

Screw Jack Model	Lever Bar Model
<i>SJ156</i>	SLB24
<i>SJ158</i>	SLB24
<i>SJ1512</i>	SLB24
<i>SJ208</i>	SLB35
<i>SJ2010</i>	SLB35
<i>SJ2012</i>	SLB35
<i>SJ258</i>	SLB42
<i>SJ2512</i>	SLB42
<i>SJ2518</i>	SLB42



Mechanical

Model	Sustaining Capacity (tons)	Dimensions (in)						Weight (lbs)
		A	B	C	D	E	F	
		Modified Acme Thread Diameter - Pitch A (Thread)	Width	Diameter	Height			
<i>SC156</i>	12	1.5 - 3	2.87	2.25	.87	3.75	5.68	5.5
<i>SC158</i>		1.5 - 3	2.87	2.25	.87	3.75	7.68	6.25
<i>SC1512</i>		1.5 - 3	2.87	2.25	.87	3.75	11.68	7.75
<i>SC208</i>	20	2 - 2.5	3.13	2.87	.93	4	7.56	10.5
<i>SC2010</i>		2 - 2.5	3.13	2.87	.93	4	9.56	12
<i>SC2012</i>		2 - 2.5	3.13	2.87	.93	4	11.56	13.5
<i>SC258</i>	24	2.5 - 2.5	3.25	3.25	1.81	5	7.81	16.75
<i>SC2512</i>		2.5 - 2.5	3.25	3.25	1.81	5	11.86	21.75
<i>SC2518</i>		2.5 - 2.5	3.25	3.25	1.81	5	17.81	29.25
Shoulder Nuts								
<i>SCN15</i>	---	1.5 - 3	3	2.41	3	2.25	---	3.25
<i>SCN20</i>	---	2 - 2.5	4	3	3.25	2.25	---	5
<i>SCN25</i>	---	2.5 - 2.5	5	3.93	4	3	---	11