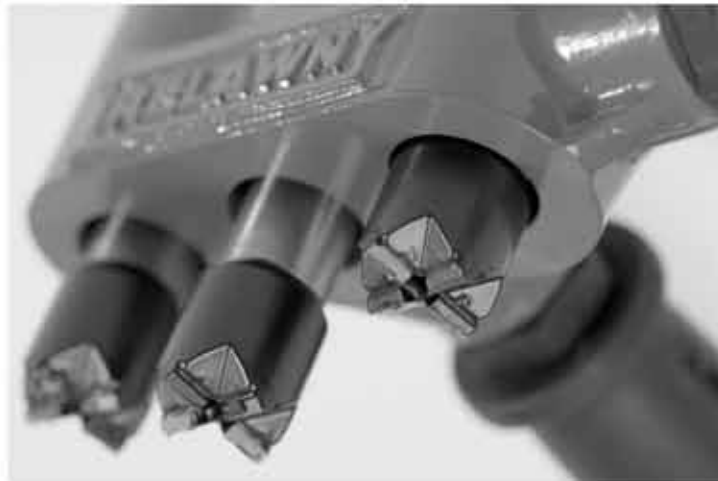




SCALING HAMMERS



OPERATION & MAINTENANCE



OPERATION

General Information

Before operating Trelawny Scaling Hammers, this manual must be read and understood by the operator, if in any doubt, ask your supervisor before using this equipment. Local safety regulations must be followed at all times. Failure to follow these instructions could result in damage to the Scaler and/or personal injury.

Trelawny SPT Ltd disclaims all responsibility for damage to persons or objects arising as a consequence of incorrect handling of the tool, failure to inspect the tool for damage or other faults that may influence its operation prior to starting work, or failure to follow the safety regulations listed or applicable to the job site.

The standard scaling tools are primarily designed for removal of heavy rust and scale.

The heavy-duty versions is suitable for concrete reduction and the removal of laitance from concrete.

These tools must not be used in a fixture.

Note: Cruciform headed pistons are suited to the removal of heavy rust and scale and for the reduction of concrete where a smoother finish is required; these will reduce the aggregate as well as the concrete surface.

Bush Hammer style headed pistons are best suited to concrete reduction and for laitance removal; these also reduce the damage caused to the aggregate, ensuring that a stronger bond is created with the next layer.

Air Supply

The compressed air must be free from water and dirt. The installation of a filter/regulator/lubricator air preparation set (with moisture trap) adjacent to the tool is strongly recommended.

Always clear the air hose before connection to the tool. Ensure that no moisture (condensation) is present in the air hose.

Ensure that a minimum 10mm (3/8") bore air hose is used and that all couplings are secure, leak free and in good condition.

Limit the length of air hose to 10M (33ft). Where extra length is necessary, for each additional 15M (50ft) of air hose used, the pressure drop is approximately 0.16bar (3psi).

Correct operating pressure is 6.2bar (90 psi).

Do not let the operating pressure fall below 5.5bar (80p.s.i.) or rise above 6.9bar (100 psi) absolute maximum.

The compressor must be able to supply a minimum of 7.0 lps (15cfm) for Single Scalers and 12 lps (25cfm) for Triple Scalers, (Free air, not displaced as quoted by some compressor manufactures).

In particularly cold weather it is recommended that a proprietary anti-freeze lubricating oil is used.

Safety

Always, read instructions first before use.

Do wear Personal Protective Equipment including safety goggles, footwear, ear defenders and gloves. In some environments it will be necessary to wear facemasks or breathing apparatus.

Do be aware that this tool is not electrically insulated.

Do keep hands and clothing away from moving parts.

Do ensure that this tool is lubricated daily.

Do be aware that the tool can create dust and flying debris.

Do be aware of others working around you.

Do store this tool in a secure and dry environment.

Always observe safe-working practices at all times.

Do not allow the tool to run unattended.

Do not use this tool in potentially explosive environments.

Do not drag this tool by the air hose.

Do not use the Scaler as a lever.

Do not use petrol (gasoline), thinners or any other high flash point solvent to clean the tool.

Do not modify this tool in any way, as this will invalidate the warranty and could lead to serious injury.

Risk of Hand-arm Vibration injury

These tools may cause Hand-arm Vibration Syndrome injury if their use is not adequately managed.

We advise you to carry out a risk assessment and to implement measures such as; limiting exposure time [i.e. actual trigger time, not total time at work], job rotation, ensuring the tools are used correctly, ensuring the tools are maintained according to our recommendations, and ensuring that the operators wear personal protective equipment [PPE] **particularly gloves and clothing** to keep them warm and

Employers should consider setting up a programme of health surveillance to establish a benchmark for each operator and to detect any early symptoms of vibration injury.

We are not aware of any PPE that provides protection against vibration injury by attenuating vibration emissions.

See 'Specifications' section for vibration emission data.

Further advice is available from our Technical Department.

Recommended lubricants

Oil the tool daily before use. Put a few drops of one of the following zinc free air tool lubricants through the air inlet.

SHELL	S22 or R10
CASTROL	Hyspin ZZ32

Cleaning

At intervals of no more than 40 hours or if operation becomes unproductive and the piston shows signs of sticking, dismantle and clean with a highly refined paraffin.

Immediately after cleaning, thoroughly oil the tool with one of the recommended lubricants.

Starting work

Prior to operating the tool check: -
That all fittings are secure, free from leaks and air hoses are in good condition.

That the air pressure is correct for this tool 6.2 bar (90 p.s.i.). Put a few drops of recommended lubricant into the air inlet of the tool.

To operate the tool, which is dependant on the type of lever fitted, for those fitted with a safety lever, first push thumb button forwards and then for both styles of lever, pull the lever towards the handle grip to start the tool, then apply the cutter heads to the surface being prepared.

To switch off, simply release the throttle lever.

Care must be taken to avoid damaging or tripping over the air hose. Maintain contact with the work surface with sufficient pressure only to keep the tool from bouncing off. Excessive pressure can prevent the tool from working to its full capacity. Handled correctly the Scaler will work quickly and efficiently.

MAINTENANCE

Excessive operator pressure will not improve the tool efficiency but will cause premature tool failure and operator fatigue.

Never allow the tool to run continuously whilst not in contact with the surface being prepared.

Please be aware: that this tool will reduce in power or stop working if the end cap (17) has become unscrewed.

Maintenance

Maintenance must only be carried out by a competent person. **Disconnect the tool from the air supply before carrying out any of the following operations.**

Clean all debris from the exterior of the tool.

Head removal - Taper Fit (On site)

Lay the scaling hammer on a solid surface with the cutter head (25/26/27) facing uppermost. Place the head removal washer (32) between the cutter head and the body; insert the removal pin (31), into cutter head hole (refer to diagram for pictorial illustration). Wearing safety glasses and using a medium size hammer give a sharp blow to the head of the pin, which will release the cutter head from the piston.

One Piece Piston & Piston/Cylinder Assembly removal (Workshop)

Hold the scaler body (24) in a vice, using the flats provided and with the end cap uppermost. On triple scalers, secure the tool in a vice, clamping on all three cutter heads (On one piece pistons take care not to clamp on the ground surfaces). Unscrew the end cap (17). Remove spring cap (19) and spring (18) from the end cap. From the bottom of the body, push up the cutter head to remove the piston assembly.

Head removal - Taper Fit (Workshop)

Lay the piston and cylinder assembly on a solid surface with the cutter head facing uppermost. Place the head removal washer (32) between the cutter head and the cylinder; insert the removal pin (31), into cutter head hole (refer to diagram for pictorial illustration). Wearing safety glasses and using a medium size hammer, give a sharp blow to the head of the pin, which will release the cutter head from the piston. Inspect all components for wear, replace as necessary.

Valve body servicing (Workshop)

Clamp the handle (10) assembly firmly in a soft face jawed vice (valve body end) throttle lever upper most. Using a 3mm diameter pin punch, remove the throttle

lever roll pin (8), and then remove the throttle lever (7). Rotate the tool 180 degrees in the vice to access the valve. Unscrew the valve cap (1) using a screwdriver, check the valve cap 'O'Ring (2), remove the spring (3), push out the valve stem (4) and remove the 'O'Ring (5). Check the valve and 'O'Ring for wear.

Assembly (Workshop)

Before any assembly takes place, ensure all parts are clean and have a film of air tool oil lubrication unless otherwise stated. Avoid lubricating oil or grease contaminating the threads of the end cap (17), the threads within the bore of the bodies (23/24) and the tapers on piston and cutter heads. The end caps will require securing with a thread-locking adhesive. It is good practice to renew all 'O' Rings (2/5) and the brush seals (22). Replace any parts showing signs of wear; paying particular attention to the small bore of the cylinder.

Head Assembly - Taper Fit (On-Site)

Thoroughly clean around area of cutter head and piston. Remove all traces of debris/oil from the taper on the piston (20) and internal taper of the cutter head (25/26/27) by cleaning with suitable oil free solvent. Place the tool in a position where the end cap is on a solid surface; Select one of the cleaned new cutter heads and place on to the taper of the piston. Using a soft-faced hammer deliver a sharp blow to the cutter head.

Head Assembly - taper fit (Workshop)

Remove all traces of oil and dirt etc, from the taper diameter on the piston (20) and cutter head (25/26/27) by cleaning with suitable oil free solvent. Fit the piston into the cylinder (21) as shown in the service layout. Place the assembly onto a solid surface; fit a new brush-seal (22) over the piston and into the recess of the cylinder. Select one of the cleaned new cutter head and place on to the taper of the piston. Using a soft-faced hammer deliver a sharp blow to the cutter head.

Note: If you are re-fitting a used cutter head to the piston it is essential that the internal diameter of the cutter head is re-surfaced using a medium grade of emery cloth - this will ensure a good fit between cutter head and piston, **do not use adhesive of any description on the taper.**

If the taper has expanded to much on the old cutter heads, they may not stay on the piston, replacements will be required.

One Piece Piston and Piston/Cylinder assembly (Workshop)

Lubricate the piston (20/33) and cylinder bore (21/29) and push the piston into the cylinder bore.

Lay the tool on a bench with the body (23/24) on its side and Insert the cylinder assembly into the body.

Valve Body assembly (Workshop)

Clamp the handle (10) assembly firmly in a soft faced vice (valve body end), insert new valve stem 'O'Ring (5) into valve body (6), followed by the valve stem (4), spring (3), then the valve cap (1) complete with its 'O'Ring (2), tighten the valve cap with a screwdriver.

Rotate assembly 180 degrees in vice. Using a 3mm diameter pin punch locate and align the throttle lever (7) in position, then drive in the throttle lever roll pin (8) into the pin location.

FINAL ASSEMBLY (Workshop)

Assemble the end cap (17), fit spring (18) into the end cap and fit spring cap (19) into the end cap as shown in the service layout.

Select as required, a piston/cutterhead, insert into the body (23/24) and apply a few drops of air tool lubricant to the top of the piston(s).

Hold the handle (10) in a **soft faced** vice ensuring the screw cap threads are uppermost.

Remove all traces of oil from the screwed cap threads and threads of the body by cleaning with suitable oil free solvent.

Apply a bead of Loctite 243 sealant to the first 3 threads of the end cap.

Screw end cap assembly into the body until finger tight and using a suitable spanner torque down to 55N.m. (40 lbs.ft).

Disposal

When the tool and its accessories are taken out of service for disposal, it is recommended that: - They are rendered unusable to prevent improper re-use.

They are dismantled into component form, segregated according to material composition and disposed of using waste recycling processes specified by local regulations.

Machinery Directive Information

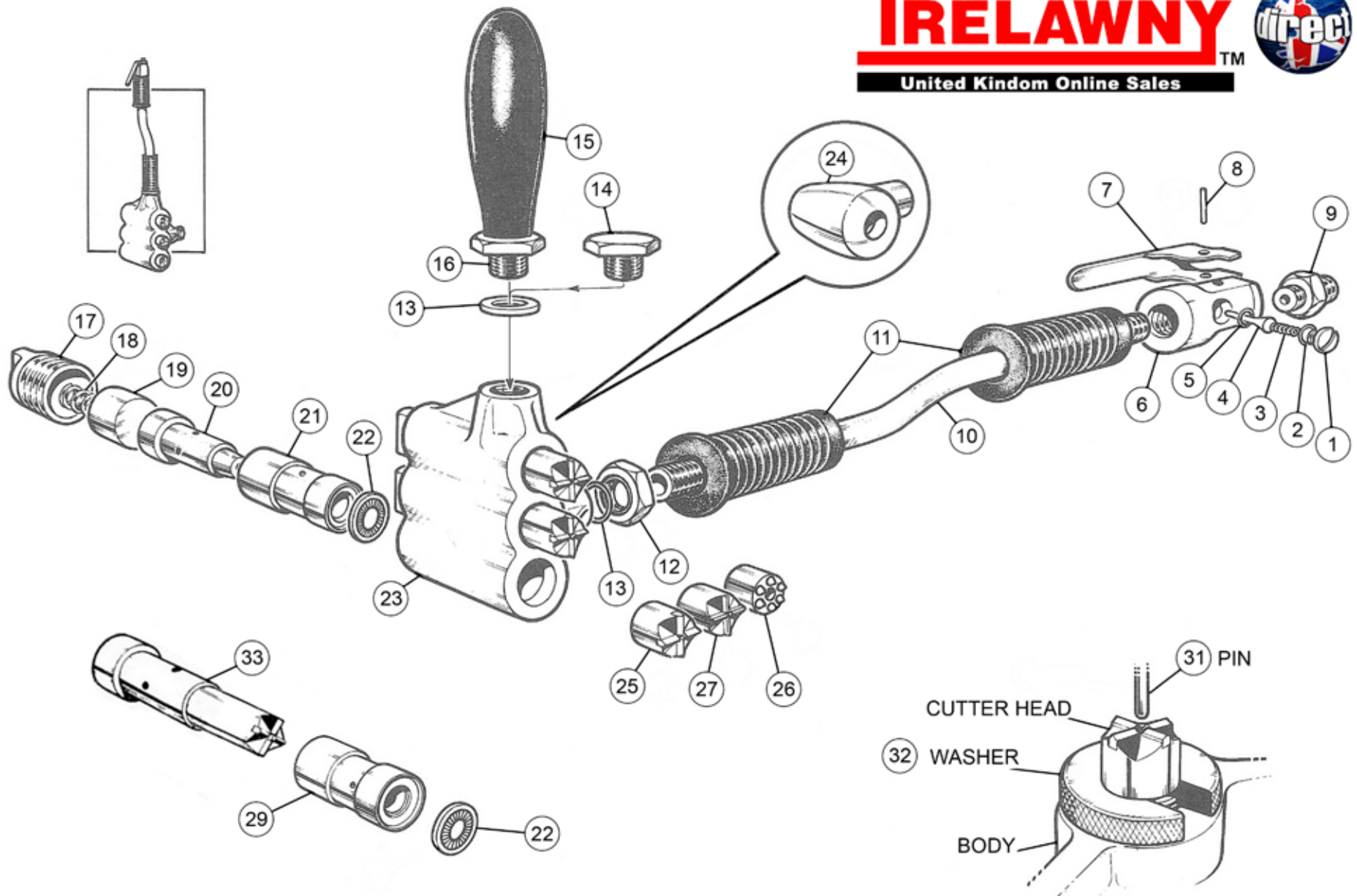
This machine has been designed and produced in accordance with the following directives: **2006/42/EC Machinery Directive**

and applicable harmonised standard:
EN ISO 1 1148-4:2010

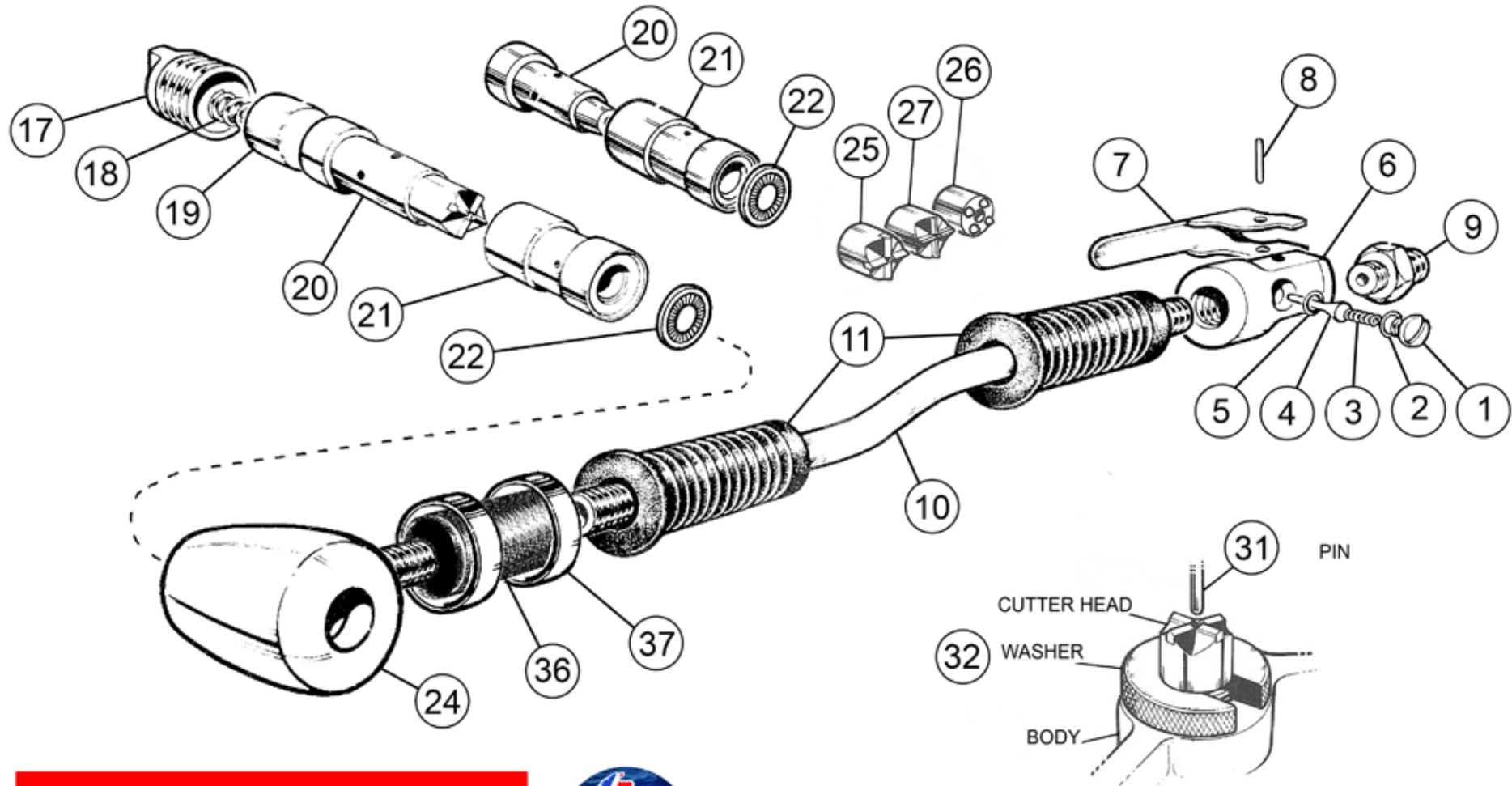
Trelawny tools are thoroughly tested under specified conditions in accordance with applicable internationally recognised standards.

STANDARD & HEAVY DUTY SINGLE AND TRIPLE SCALING HAMMERS

TRELAWNY™
United Kindom Online Sales



STANDARD & VIBRATION REDUCED SINGLE SCALING HAMMER



PARTS LIST

Item No	Part No	Description	Item No	Part No	Description
1	615.3021	Valve Cap	19	615.5361	Spring Cap
2	809.0139	O' Ring - Valve Cap	20	612.5301	Piston (Std taper fit)
3	712.3022	Valve Spring	21	613.5301	Cylinder (Std taper fit)
4	618.3022	Valve Stem	22	614.5301	Brush Seal
5	809.0089	O' Ring - Valve Seat	23	611.5301	Triple Scaler Body (Std taper fit)
6	616.5321	Valve Body		611.5355	Triple Scaler Body (H/Duty)
	*423.5321	Valve Body Assembly	24	411.5101	Single Scaler Body (Std & H/Duty)
7	716.3000	Throttle Lever		411.5121	Single Scaler Body (Vibration Reduced, Std and H/Duty)
	*716.1000	Throttle Safety Lever	25	426.5351	Cruciform Head (Taper Fit)
8	813.0108	Roll Pin	26	426.5352	Bush Hammer Head (Taper Fit)
9	711.5301	Adaptor	27	606.5303	Beryllium Copper Head (Taper Fit)
10	624.5301	Main Handle (Standard Tools)			
	624.5350	Main Handle (Vibration Reduced)	29	613.5303	Cylinder (H/Duty)
11	717.5301	Rubber Grip			
12	625.5301	Locknut	31	827.0428	Cutterhead Removal Pin
13	810.9001	Sealing Washer	32	633.5301	Cutter Head Removal Washer
14	634.5301	Hexagon Plug	33	612.5320	Single Piece H/Duty Piston (Cruciform)
15	822.5302	Side Handle Grip	34	612.5325	Single Piece H/Duty Piston (Bush)
16	422.5315	Side Handle			
17	615.5341	Screwed Cap	36	719.1380	Flexible Connector
18	712.5301	Compression Spring	37	821.2000	Hose Clamp
					*Items not shown in exploded view
				*633.5301	Single Scaler Vacuum Shroud
				*437.5300	Triple Scaler Vacuum Shroud
				*731.0120	Vacuum Shroud Seal

TROUBLE SHOOTING

Poor performance or lack of power	Low air pressure.	Ensure that the air pressure is correct at 90psi, max 100psi.
	If tool has been left for some time without use, the oil may dry out slightly causing a sticky residue.	Strip tool down and re-oil.
	Tool worn out, can you feel side ways movement between the piston and cylinder bore.	Replace the piston and cylinder, along with a new bush seal.
Tool continues to run with trigger released	Valve seal may have become dislodged through the tool being disconnected with the trigger in the open position.	Ensure that the trigger has not been taped or wired in the open position. Do not use quick release couplings to switch tool off.
Tapered cutterhead will not stay on piston	To high an air pressure being used, piston hits bottom of cylinder causing head to be jettisoned.	Ensure that the air pressure is correct at 90psi, max 100psi.
	Traces of oil remained on the tapered surfaces when replacing cutter head.	Ensure that the cutterhead and pistons tapers are completely free of oil, use a good degreasing agent and clean cloth prior to assembly.

TECHNICAL SPECIFICATIONS

Model	Single Scaler Standard Duty	Single Scaler Heavy Duty	VL Single Scaler Standard Duty	VL Single Scaler Heavy Duty	Triple Scaler Standard Duty	Triple Scaler Heavy Duty
Piston Diameter	27mm (1.06")	27mm (1.06")	27mm (1.06")	27mm (1.06")	27mm (1.06")	27mm (1.06")
Piston Length	68.6mm (2.7")	111.75mm (4.4")	68.6mm (2.7")	111.75mm (4.4")	68.6mm (2.7")	111.75mm (4.4")
Piston Stroke	26.0mm (1.023")	26.5mm (1.04")	26.0mm (1.023")	26.5mm (1.04")	26.0mm (1.023")	26.5mm (1.04")
Blows Per Minute	3000	2400	3000	2900	3 x 3000	3 x 2400
Air Consumption	3.3lps 7.0 cfm	3.7 lps (8 cfm)	3.3 lps (7.0 cfm)	4.25 lps (9.0 cfm)	5.2 lps (11 cfm)	7.0 lps (15 cfm)
Air Pressure	6.2 bar (90psi)	6.2 bar (90psi)	6.2 bar (90psi)	6.2 bar (90psi)	6.2 bar (90psi)	6.2 bar (90psi)
Air Inlet	3/8" NPT (c/w 3/8"BSP Adapter)					
Length	465mm (18.3")	465mm (18.3")	515mm (20.3")	515mm (20.3")	450mm (17.7")	450mm (17.7")
Working Height	152.5mm (6.0")	160mm (6.3")	140mm (5.5")	160mm (6.3")	152.5mm (6.0")	160mm (6.3")
Weight	2.5kg (5.5 lbs)	2.6kg (5.7 lbs)	2.46kg (5.42lbs)	2.49kg (5.49"lbs)	3.7 kg (8.1 lbs)	5.2 kg (11.4 lbs)
Noise Level LpA dB (A)	88.1	93.9	92.5	90.9	92.7	98.3
Noise Level LwA bD (A)	101.1	106.9	106.3	104.5	105.7	111.3
Vibration Level m/s ² Primary	6.8 (k)	6.96 (k)	3.7 (k)	4.5 (k)	13.4 (k)	8.7 (k)
Vibration Level m/s ² Secondary	31.4 (k)	26.0 (k)	9.9 (k)	9.4 (k)	12.0 (k)	13.5 (k)

Declared vibration emission value are in accordance with BS EN 12096: 1997

(K)= -0 +40 the factor of uncertainty, which allows for variations in measurement and production. Vibration data figures are tri-axial, which gives total vibration emission.

Risk of Hand Arm Injury

Because of various factors, the range of vibration emission during intended use of these tools is expected to be between 6.8m/s² – 44m/s² for the standard tools and 3.7m/s² - 13.16 for the VL Range of Scaler. The vibration is dependent on the task, the operators grip, and feed force employed etc.

Noise level measured in accordance with EN ISO 15744: 1999
Vibration measured in accordance with EN ISO 28927 and EN ISO 20643

Trelawny Surface Preparation Technology operates a policy of continuous product development and refinement and therefore reserves the right to change technical specifications and product designs without giving prior notice.



site: www.trelawnydirect.com
email: sales@trelawnydirect
call: 01698 333200

Trelawny tools are thoroughly tested under specified conditions in accordance with applicable internationally recognised standards. When a tool is used on site the conditions may not be the same as those used in Trelawny tests.

Trelawny Surface Preparation Technology operates a policy of continuous product development and refinement and therefore reserves the right to change technical specifications and product designs without giving prior notice.

© Copyright 2009. Trelawny SPT Limited, CV31 1XT, UK All rights reserved. Any unauthorised use or copying of the contents or part thereof is prohibited. This applies to trademarks, model denominations, part numbers and drawings. Use only genuine Trelawny spares.

The use of non-Trelawny spare parts invalidates the warranty.