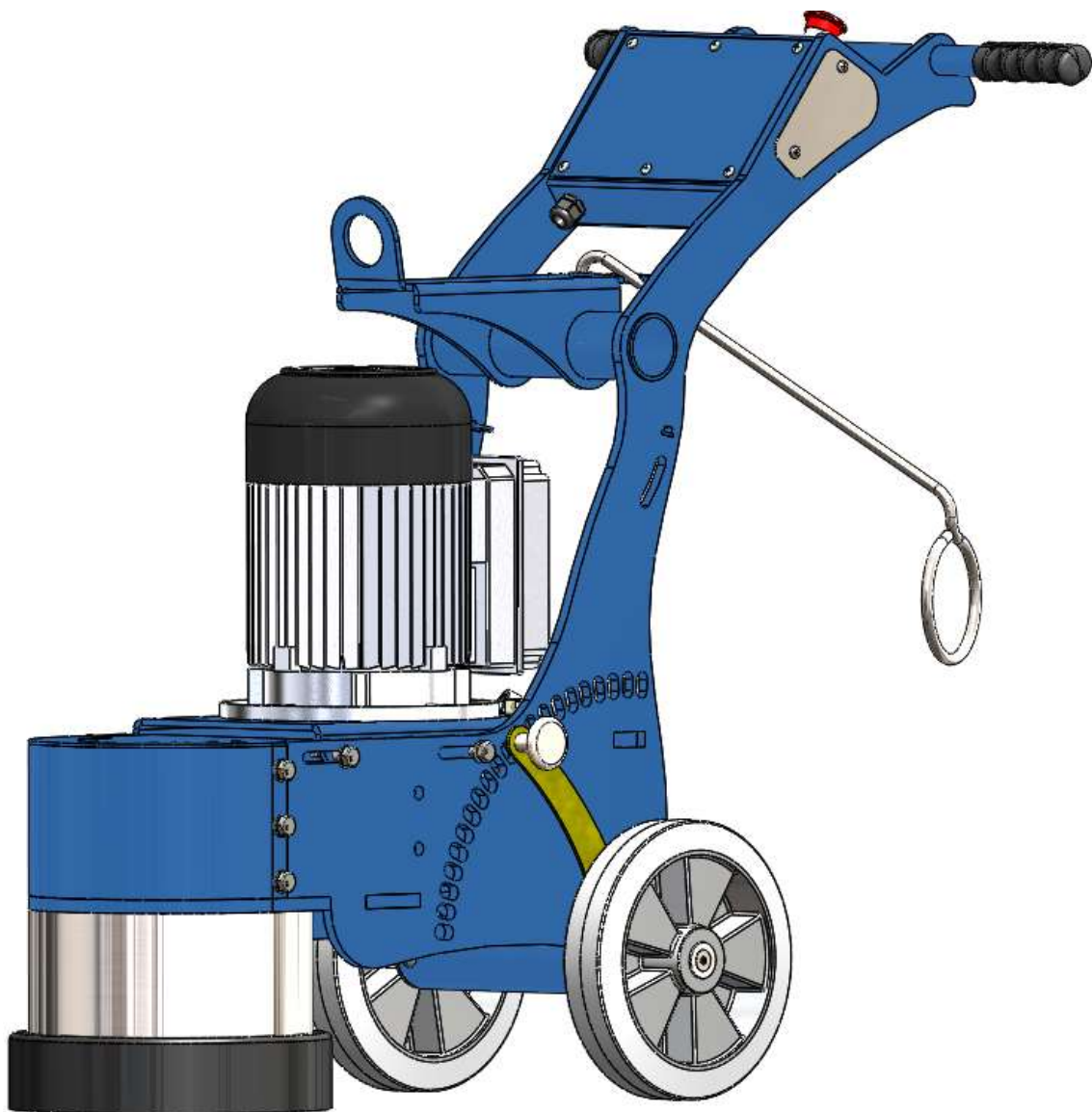


# **GALAXY Generation3**

## **SAFETY & OPERATORS MANUAL**

CAUTION: Read the instruction manual before using the appliance.

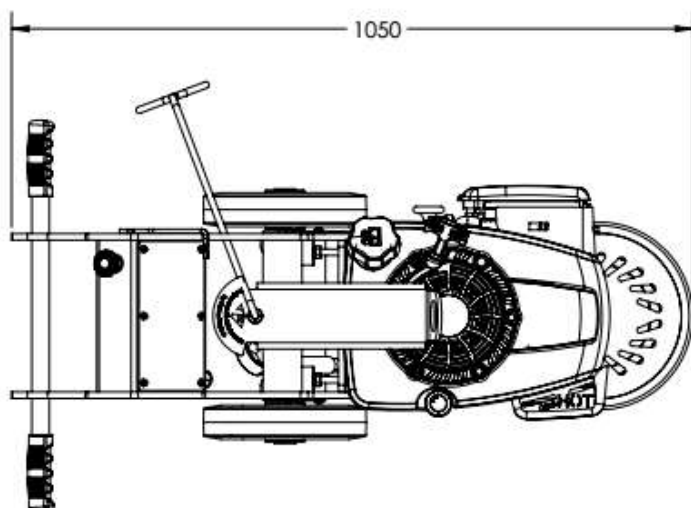
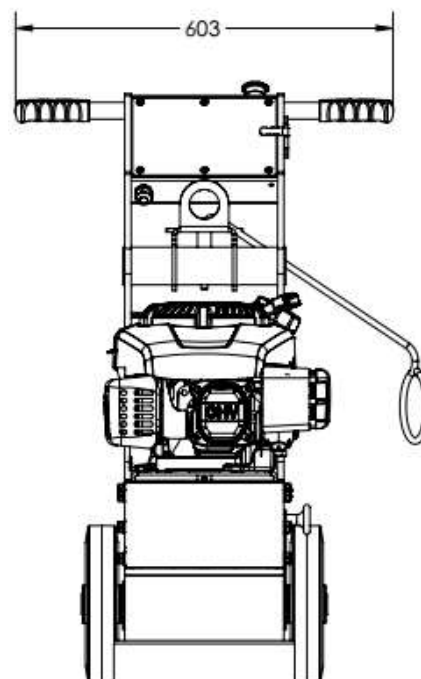
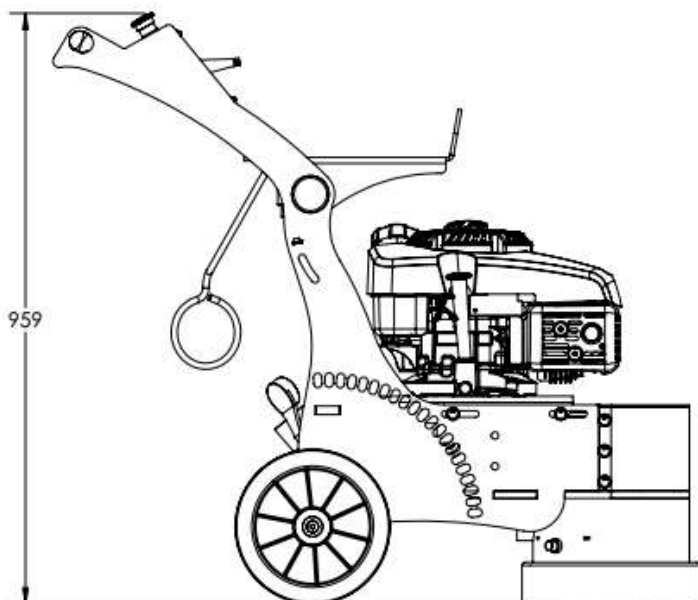


## Contents

Specifications.....	2
Safety instructions .....	3
Safety instructions .....	4
Operating Instructions.....	5
Operating Instructions.....	6
Tooling position & Magnetic plugs .....	7
Axle height adjustment.....	8
Electrical safety.....	9
Problem solving .....	10
E1 Wiring Diagram .....	11
E3 Wiring Diagram – Control Panel .....	12
E3 Wiring Diagram – Contactor Box .....	13
Parts Listing – P9 .....	14
Parts Listing – P5 .....	15
Parts Listing – E1 .....	16
Parts Listing – E3 .....	17
Parts Listing – P9 Bearing Assembly .....	18
Parts Listing – P5 & E3 Bearing Assembly .....	19
Parts Listing – P5 & E3 Bearing Assembly .....	20
Parts Listing – Bearing Housing Assembly .....	21
Parts Listing – Coupling Assembly .....	22
Parts Listing – Throttle Assembly .....	23
Parts Listing – Axle Assembly.....	24
Parts Listing – E3 Electrical Assembly .....	25
Warranty .....	26

Specifications

GALAXY				
Model	E1	E3	P5	P9
Weight	118 kg	124 kg	120 kg	125 kg
Head Pressure	90 kg	96 kg	96 kg	98 kg
Dimensions	603 x 1050 x 959 (Width x Height x Length)			
Rated Voltage	230 VAC	430 VAC	-	-
Phases	3	2	-	-
Rated Watts	2200	4000	-	-
Hp	2	5.5	5	9
Grinding Path	250	250	250	250



### Safety instructions

1. Read and understand the instructions on the machine and in this manual and engine manual (if applicable). Different models may have different parts and controls.
2. Equipment should only be operated by trained personnel, in good physical condition and mental health (not fatigued). The operator and maintenance personnel must physically be able to handle the bulk weight and power of this machine.
3. The GALAXY must only be used according to the instructions given in this manual. Any other work methods or practices could result in injury or death
4. This is a one person machine. Maintain a safe operating distance to other personnel. Remember 'one machine, one operator'.
5. This equipment is intended for commercial use.
6. For the operators' safety and the safety of others, always keep all guards and shrouds in place.
7. Never start or run machine when it is unattended.
8. Check for loose retaining bolts and nuts 3 hours of use
9. This machine is only intended for use on floor surfaces such as concrete, terrazzo and other hard floor surfaces.
10. Never start or run machine disk(s) are not in contact with the surface.
11. Do not lend or rent machine without the operating and safety instructions for the machine (and the engine, if applicable).
12. Wear clothing suitable for the job and for the work place including, safety shoes, hard hat, hearing protection, non-fogging vented safety goggles, and dust mask suitable for dust.
13. Keep body parts or any loose clothing away from moving parts. Failure to comply could result in bodily injury.
14. Do not modify machine in any way. Only use genuine GALAXY parts and accessories.
15. Repairs should be performed by qualified persons only.
16. Ensure parts have stopped moving and disconnect power or spark plug when servicing or changing blades or accessories.
17. Never operate machine in rain or if heavy moisture is present.
18. Petrol is extremely flammable and poisonous. Petrol should only be dispensed in well ventilated areas, and only when engine is cool.
19. WARNING! POISONOUS EXHAUST GASES. Do not operate petrol powered equipment, including generators, without adequate ventilation. Carbon monoxide is an invisible odourless gas that can harm or can kill.

**Safety instructions**

20. Do not operate GALAXY with any covers or doors removed or open.
21. The GALAXY can produce sound pressure levels greater than 85db. The operator must wear approved safety ear protection.
22. Do not allow the supply cord to come in contact with the cutting blade/head or other moving parts of this machine.
23. **WARNING!** As with any diamond tooling, breathable silica or other hazardous dusts may be generated by use and maintenance of this machine. The dust can cause severe and permanent lung damage, cancer, and other serious diseases. Do not breathe the dust. Do not rely on your sight or smell to determine if dust is in the air. Silica may be in the air without a visible dust cloud. If air monitoring for silica is not provided by your employer at your work site, you must wear appropriate respiratory protection when operating or maintaining this equipment. Consult your employer for proper respiratory protection.

### Operating Instructions

24. Wear clothes suitable for the job and for the work place including, safety shoes, hard hat, hearing protection, non-fogging vented safety goggles, and dust respirator suitable for dust.
25. The GALAXY must only be used according to the instructions given in this manual. Any other work methods or practices could result in injury or death
26. WARNING! Disconnect power before lifting the head off the surface.
27. WARNING! POISONOUS EXHAUST GASES. Do not operate petrol powered equipment, including generators, without adequate ventilation. Carbon monoxide is an invisible odourless gas that can harm or can kill.
28. Be sure all equipment is tested and tagged prior to use on any job as applicable.
29. Inspect entire area to be ground before grinding and remove any bolts or concrete nails (etc) that could damage tooling or the machine and which could cause a hazardous situation.
30. Ensure there are no obstacles or existing structures that could present a hazard to the operator. If so, take necessary action to eliminate the hazard.
31. Tilt machine back so handle is resting along the floor. See Section 'Tooling Removal'
32. Install appropriate diamond tooling or other available tooling into the machine. Only use genuine Floorex tooling. Failure to comply could result in bodily injury. See section 'Tooling Removal' for illustrations on how to remove and install tooling.
33. Tilt machine back onto the disk.
34. If the machine is electric version, connect machine to suitable power outlet. Only use heavy duty power lead suitable for high current use (preferably 2.5mm<sup>2</sup> cable), no longer than 15 meters.
35. If no power is available within the specified distance, have a qualified person install a suitable power outlet closer to your work. Alternatively use 4mm<sup>2</sup> cable for up to 40 meters.
36. Connect a suitable dust extractor to the machine via a 38 or 50mm flexible hose. The machine is designed to take the standard 50mm hose ends to make connection of dust extractors easy and hassle free. A water connection for wet grinding is also supplied if this is not practical. In the case of wet grinding, a dust collector is not needed.
37. Keep machine clear of drainage pits, grates, steps or major lips or such hazard. Failure to comply could result in bodily injury and or could damage the machine or property.
38. Ensure machine is on a level surface.
39. This machine is designed to operate with the wheels in contact with the floor at all times. Do not operate with wheels off the floor.

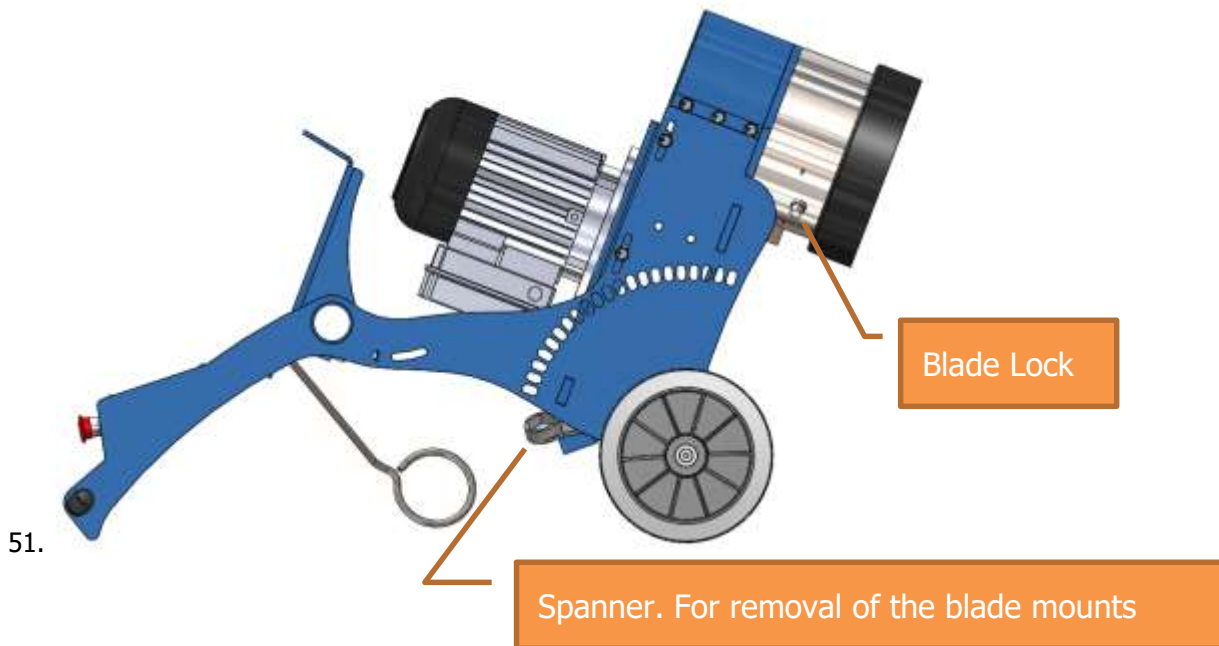
### Operating Instructions

40. The GALAXY has axle height adjustment to level the machine and also assists ergonomics of the machine so as to cause less fatigue on the operator. To set axle height, place the machine on a level surface and adjust the axle height lever until the level bubble is somewhat in the centre. After initial operation the axle can be adjusted to fine tune the results.
41. Switch on the dust extractor or turn on the water tap so a small amount of water is spraying on the tool.
42. Hold the handles firmly and
  - a. For electric machines; switch the machine on by pushing the green button.
  - b. For Petrol Machines; Put the throttle lever in the choke position (fully towards operator) and pull start the engine. Note; some machines have auto choke and the Idle position is adequate for starting.

Caution!! When Starting the machine in the full choke (when Cold) the machine clutch could engage for a short period until machine it taken back to idle. Be aware of this and have a second operator hole the handle to ensure the machine is kept controlled.
  - c. As soon as the engine is started, move the lever to the idle position. And when ready move the lever to the full throttle position.
43. On electric machines, the controls on the GALAXY include an over load device. It is there to protect the controls and motor from irreparable damage. If it trips it indicates a problem. (i.e.; undersize power lead or poor power to your power supply). Refer earlier in this section for recommendations on power leads. Rectify the problem or decrease load on the GALAXY by using tooling with more surface area.
44. Continuing to use the GALAXY when constant tripping occurs, VOIDS THE WARRANTY.
45. Do not attempt to make any adjustments while the machine is in operation. Any adjustments must only be performed when machine is stopped and power or spark plug disconnected.
46. In the event of the machine pulling to one side all the time; adjust the axle height to obtain the best result. (See section 'Axle Height'). This machine is designed to operate with the wheels in contact with the floor at all times. Do not operate with wheels off the floor.
47. After a few minutes of grinding check the wear of the diamond tooling. This will pay handsomely if the diamonds are wearing out fast due to soft concrete / abrasive concrete. There is a wide range of diamonds available to suit every need. See Section 'Diamond Tooling Selection Guide'.
48. See Section 'Problem Solving' for tips on how to grind faster on tough concrete and how other problems can be rectified.
49. **WARNING!** As with any diamond tooling, breathable silica or other hazardous dusts may be generated by use and maintenance of this machine. The dust can cause severe and permanent lung damage, cancer, and or other serious diseases. Do not breathe the dust. Do not rely on your sight or smell to determine if dust is in the air. Silica may be in the air without a visible dust cloud. If air monitoring for silica is not provided by your employer at your work site, you must wear appropriate respiratory protection when operating or maintaining this equipment. Consult your employer for proper respiratory protection.

Tooling position & Magnetic plugs

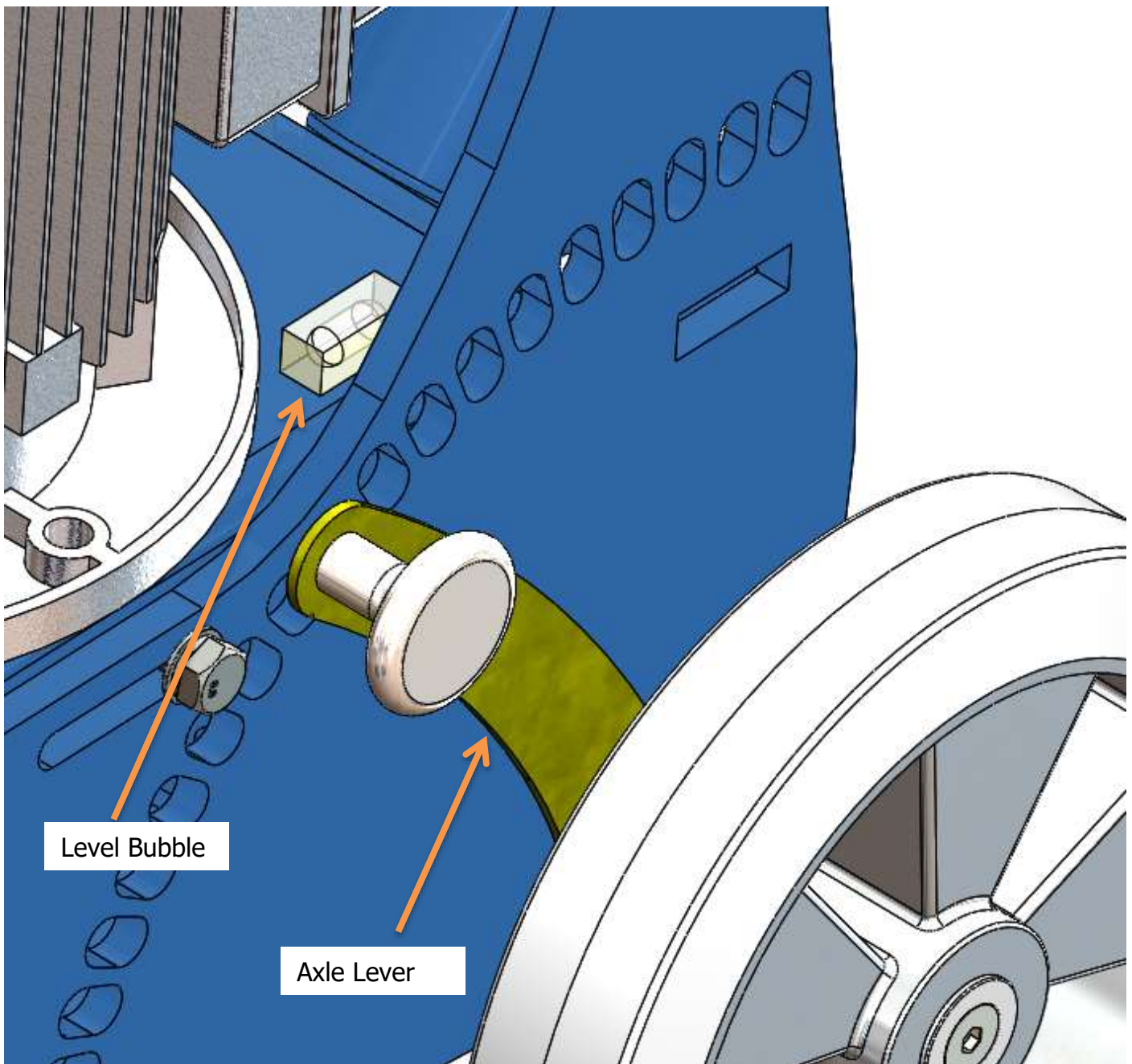
50. To remove tooling from the GALAXY, Tilt the machine to the tooling position as shown below.





### Axle height adjustment

52. This machine is designed to operate with the wheels in contact with the floor at all times. Do not operate with wheels off the floor.
53. There is a level bubble provided (located behind the motor) for levelling the machine for best user experience and coupling life. It does not change the grinding results in any way.
54. The axle lever should be set so the bubble is up to the forward line on the spirit level. This assures the longevity of the coupling life and gives the nicest position for ease of use. (Assuming the floor is level)



### Electrical safety

55. All electrical maintenance and repairs are to be carried out by qualified persons only.
56. CAUTION - Line terminals may be alive when main switch is in the off position. Disconnect the machine completely before performing any maintenance or repairs.
57. WARNING - DO NOT operate the machine with any electrical panels open.
58. WARNING - The controls on the GALAXY include an over load device. It is there to protect the controls and motor from irreparable damage. If it trips it indicates a problem. (i.e.; undersize power lead or poor power to your power supply). Refer earlier in this manual for recommendations on power leads. Rectify the problem or decrease load on the GALAXY by using tooling with more surface area, or place weights supplied on the brackets on handle for this purpose.
59. Continuing to use the GALAXY when constant tripping occurs, VOIDS THE WARRANTY!
60. Never operate machine in the rain or if heavy moisture is present.
61. The overload is there to protect you and the machine from harm. DO NOT bypass or adjust the over load in any way. If it is faulty, only replace with original part that is identical to the faulty one.
62. Never bypass over current devices in this machine.
63. Never connect or disconnect power cables with voltage present or while under load.
64. Disconnect all power connections and observe lock out / tag out procedures before attempting to carry out any maintenance or repair on any equipment.
65. Avoid any contact with any rotating parts or driven parts.
66. Never use equipment that has not been tested and tagged (including cords).
67. Before connecting the machine to power, check the condition of all power leads and cables on, or used in conjunction with the machine. DO NOT USE it if any faults, cuts, wear marks, etc... Get qualified persons to repair and re-tag it as required by regulations in your country.
68. Connect machine to suitable power outlet. Only use heavy duty power lead suitable for high current use (preferably 2.5 mm<sup>2</sup> cable), no longer than 15 meters.
69. If no power is available within the specified distance have a qualified person install a suitable power outlet closer to your work. Alternatively use 4 mm<sup>2</sup> cable for up to 40 meters.
70. Do not operate GALAXY with any covers or doors removed or open.

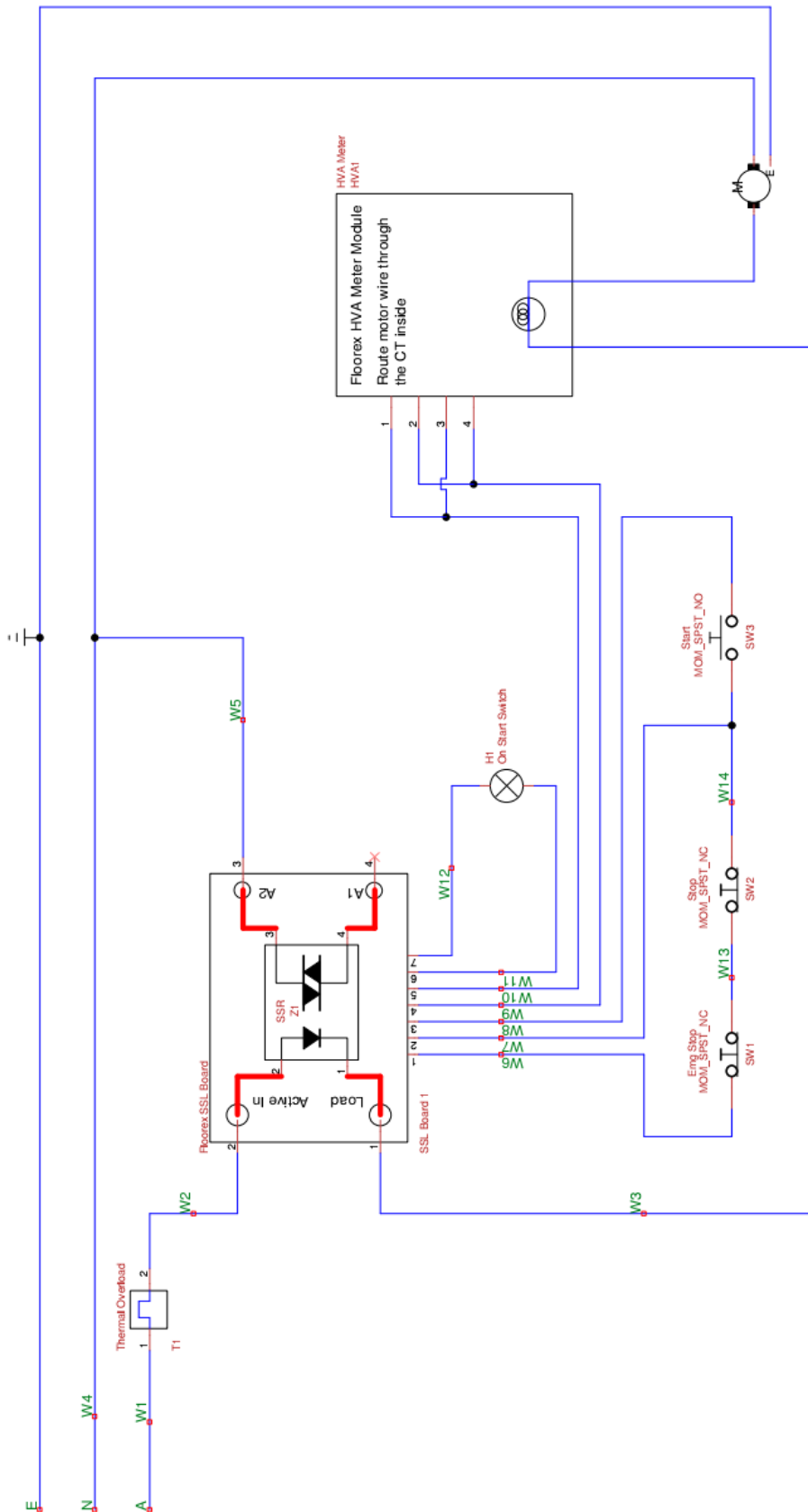
**Problem solving**

72. Diamond Grinding has many variables. When you understand some of these, you can solve a lot of problems without a lot of bother and expense.

PROBLEM	CAUSE	REMEDY	EXPLANATION
Machine will not start / run.	No power is present at cable end.	Check the power is present with another tool.	Using another tool confirms power is present
	Machine is trying to start on glue or other sticky substance.	Clear a patch with a scraper and grind into the glue a little at a time.	This means it only tackles a small amount of glue at a time and keeps the glue residue coated with dust, preventing glue sticking and building up on the diamonds.
	Power lead is too small in capacity or too long.	Upgrade the power lead to 2.5mm <sup>2</sup> (15meters max) or 4mm <sup>2</sup> (40 meters max).	The long / small capacity cable is too restrictive and can't allow enough power through for the machine to start / run properly.
		Use weight on the handle.	The weight on the handle reduces the load on the machine thus reducing the current.
Machine is not grinding at all.	No blades / accessories in unit.	Fit blades. <b>Note; check wear on machine.</b>	
	Very hard concrete or glazed topping on concrete.	Turn dust extractor down / restrict flow. Only just control the dust from escaping.	The extra dust accumulating on the floor acts as an abrasive between the segments and the floor thus exposing the diamonds better.
		Place river sand or cement on the floor.	The sand is an abrasive as described above.
		Use softer grade of diamond tooling.	The softer grade will expose the diamonds better.
		Use coarser diamond tooling.	The coarser diamond tooling can get through hard toppings without wearing out the diamonds too fast.
		Reverse the rotation of the machine (switch on the bottom of the motor box)	The tooling exposes the diamonds when reversed. This works best when using plugs.
The diamonds are wearing out too fast.	The concrete is: *Soft *Abrasive *Rain Damaged *A rough finish (Scarified or shot blasted).	Use a powerful dust extractor to remove as much dust as possible.	The dust, as described acts as an abrasive between the segments exposing the diamonds prematurely, wasting them.
		Use harder diamond matrix.	The harder segments don't expose as easily.
		Use tooling with more segments or area <sup>2</sup> of segment.	The tooling with more segments or area <sup>2</sup> doesn't have the same weight on them, reducing wear.
	The diamonds are too soft or too few.	Use weights on the handle	This reduces the weight on the diamonds thus reducing the wear on them.

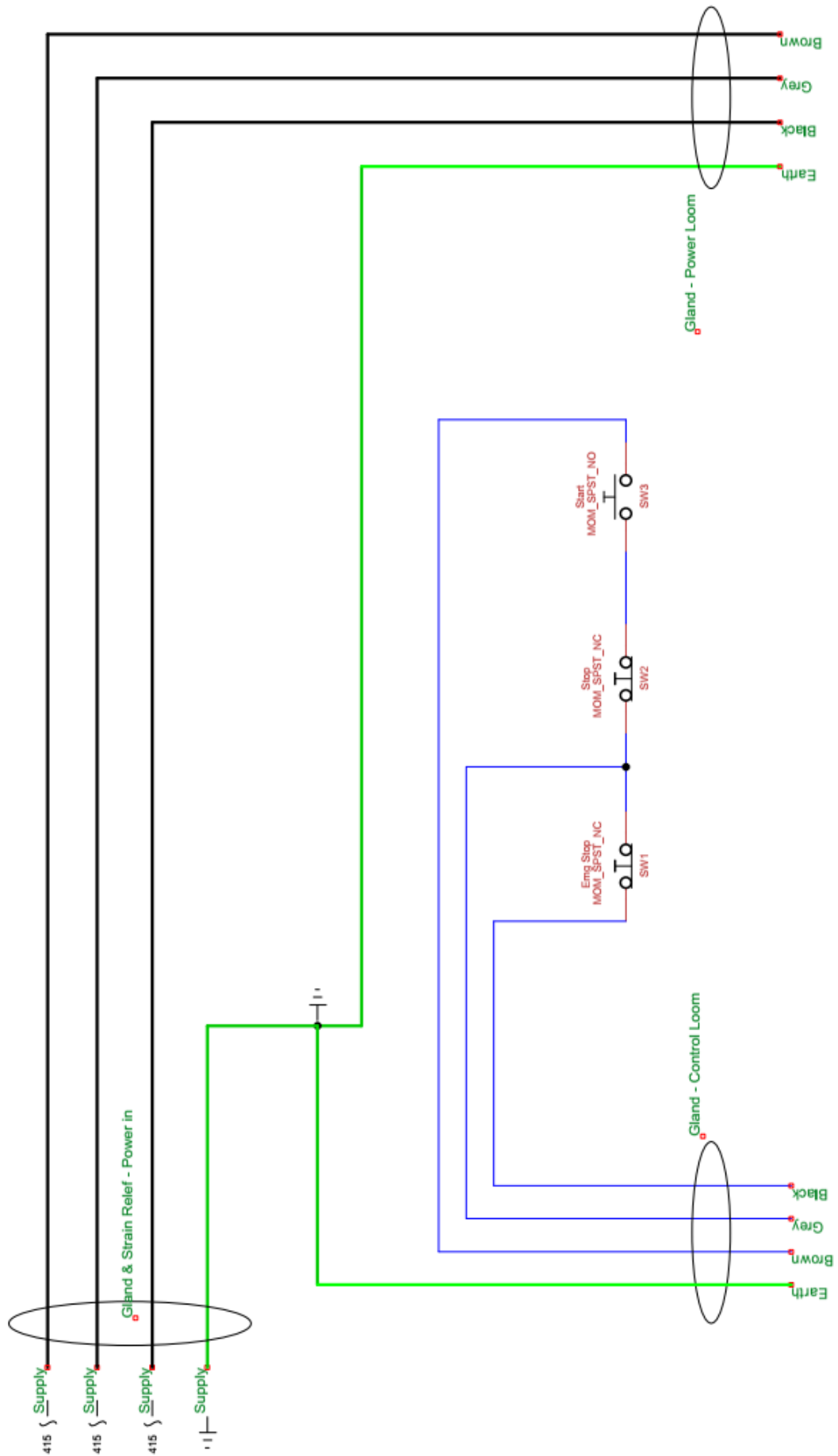
**NOTE: THIS IS A GUIDE ONLY**

E1 Wiring Diagram

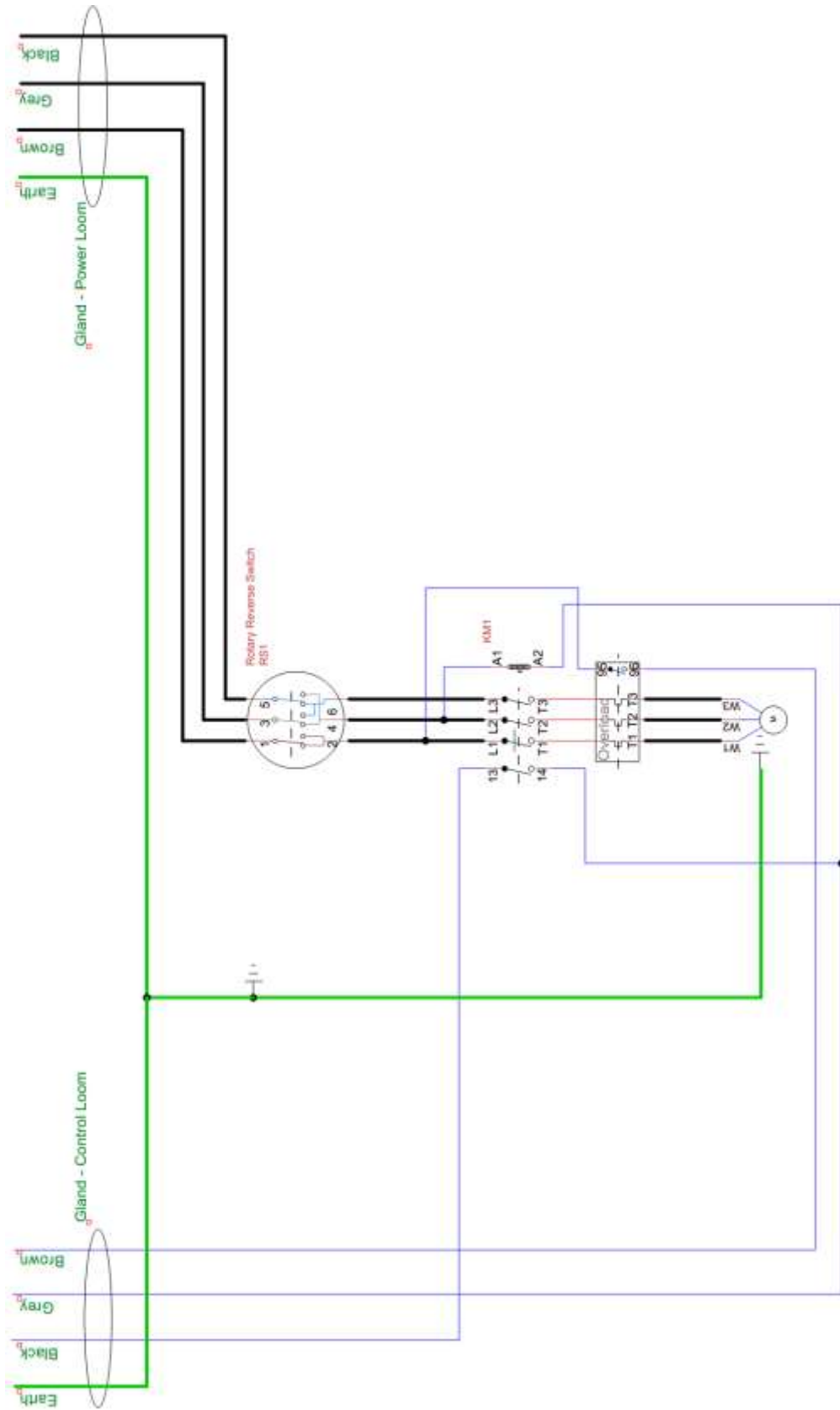


Title	SAT 480 Generation3 Wiring		
Author			
Floorex Products			
File	ams\Satellite_480 Generation3 Wiring_Digram.dsn		
Revision	Date		
1.0	07-01-2013	Sheets	1 of 1

E3 Wiring Diagram – Control Panel

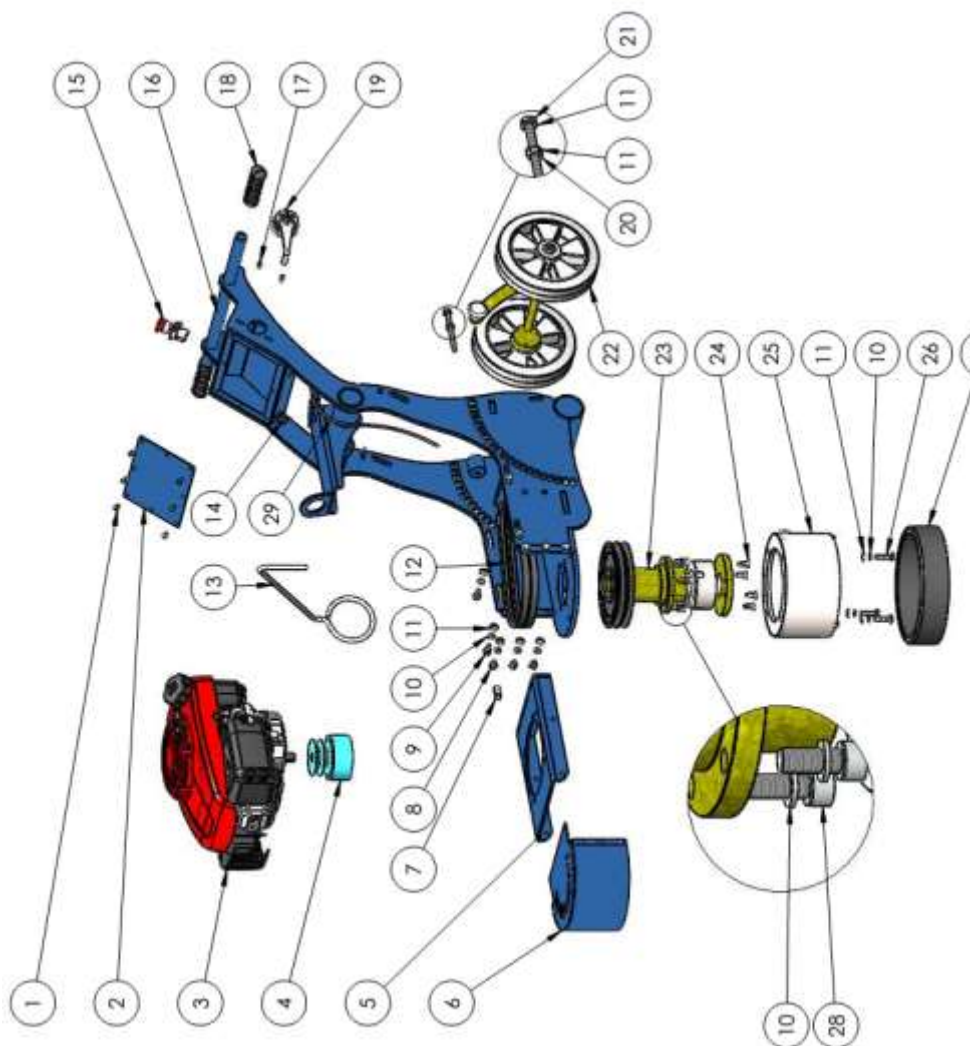


E3 Wiring Diagram – Contactor Box



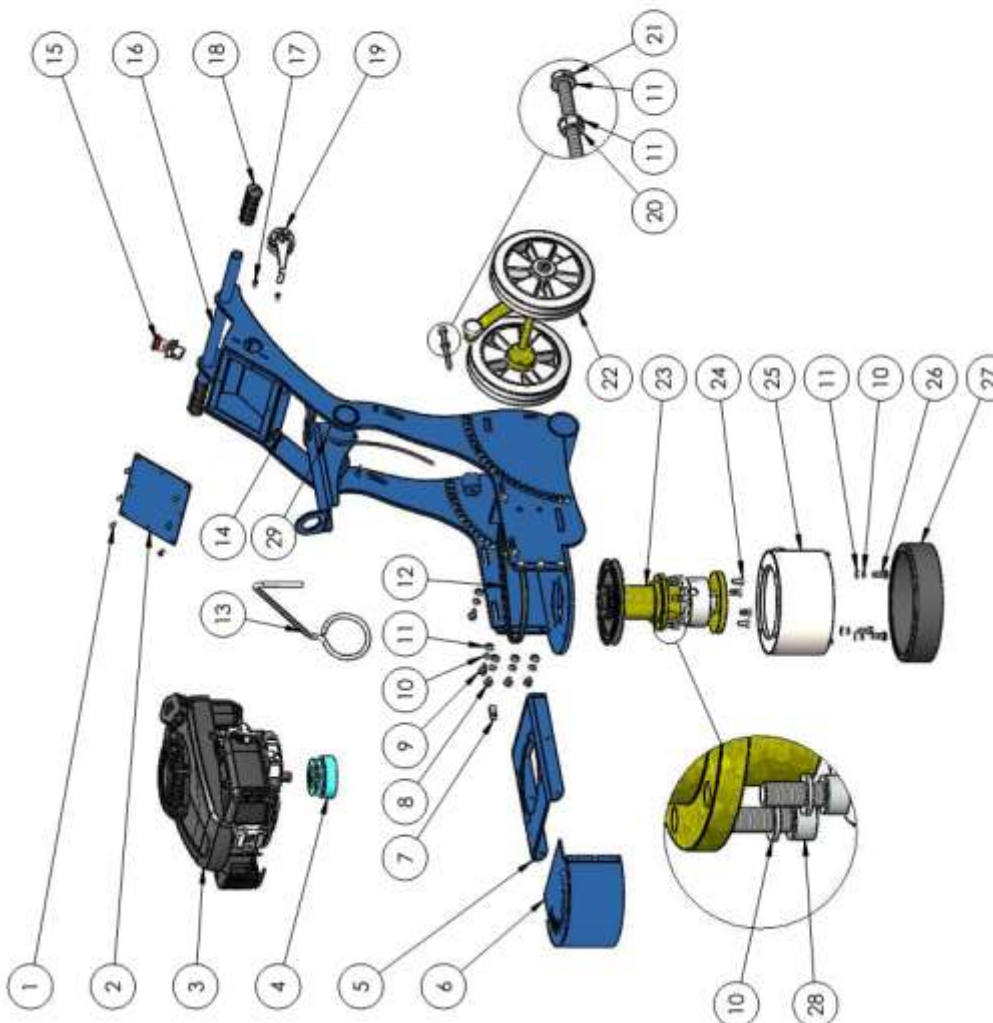
Parts Listing – P9

ITEM NO.	PartNo	DESCRIPTION	P9/QTY.
1	F3-565	Screw Pan Head M6 X 12 Phillips	6
2	G3-203	Galaxy 250 Control Box Lid	1
3	G3-418	Honda GXV340 Vertical 1" Shaft	1
4	G3-262	Clutch 5HD	1
5	G3-202	Galaxy 250 Motor Mount	1
6	G3-204	Galaxy 250 Belt Cover	1
7	G3-193	Level Bubble Square	1
8	F3-283	M10 X 12 Hex Head Set Screw	6
9	F3-292	M10 X 20 Hex Head Set Screw	4
10	F3-317	M10 Spring Washer	21
11	F3-332	M10 Standard Washer	16
12	G3-513	BX 34	2
13	G3-060	Cable Management Device 360mm	1
14	G3-036	Cable Gland M20	1
15	G3-031	Emergency Stop Switch Complete	1
16	G3-200	Galaxy 250 G3 Main Frame	1
17	F3-230	M6 X 10 Socket Head Cap Screw	2
18	G3-050	Rubber handle Grip	2
19	See Parts Dia.	Galaxy 250 Throttle Assembly	1
20	F3-345	M10 Standard Nut	2
21	F3-290	M10 X 55 Hex Head Set Screw	2
22	See Parts Dia.	Galaxy 250 Axle Assembly	1
23	See Parts Dia.	Galaxy 250 Main Bearing Unit - P9	1
24	F3-268	M10 X 25 Socket Head Countersunk Screw	4
25	See Parts Dia.	Galaxy 250 Shroud Assembly	1
26	F3-287	M10 X 40 Hex Head Set Screw	4
27	G3-230	Shroud Galaxy 250 68mm Deep	1
28	F3-246	10 X 25 Socket Head Cap Screw	6
29	G3-254	Cable Control For Petrol 5 (Inner and Outer)	1



Parts Listing – P5

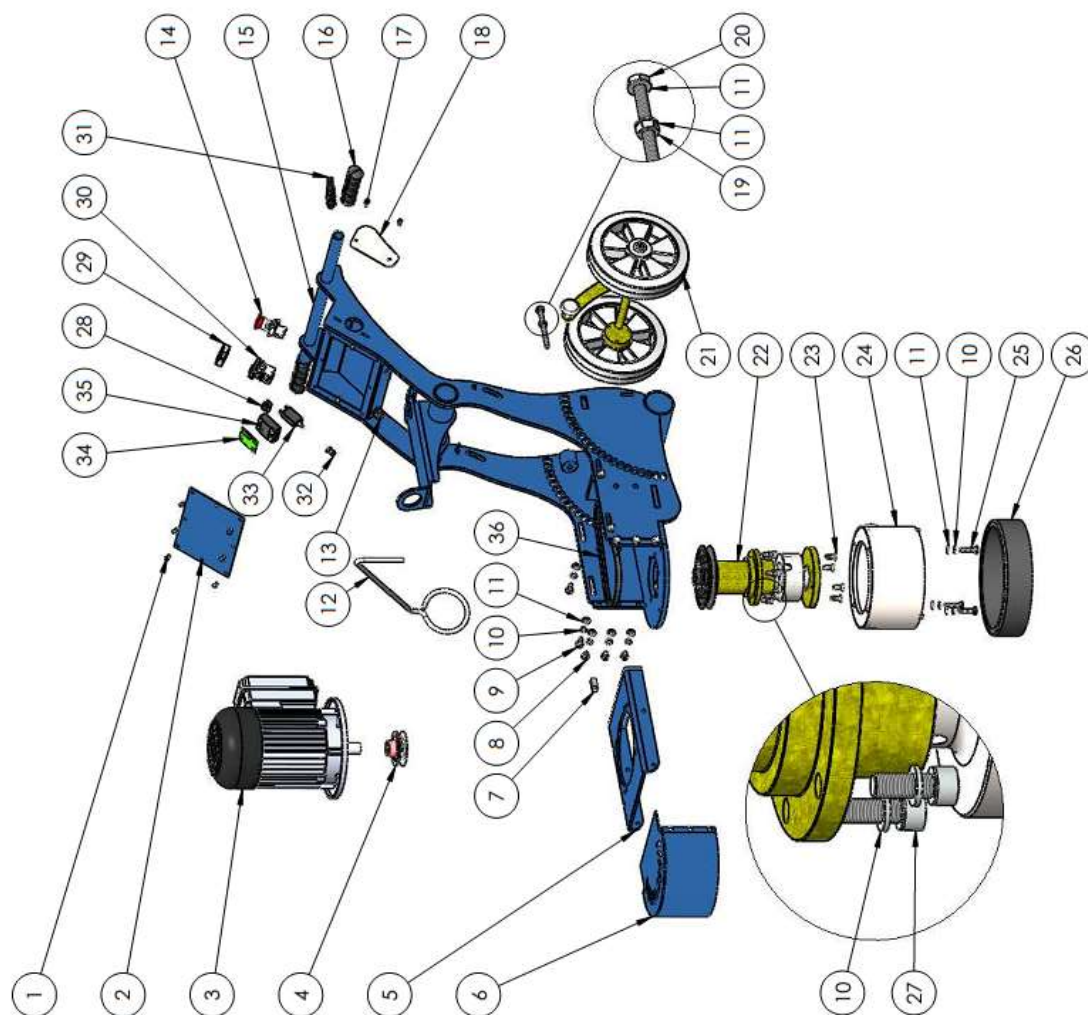
ITEM NO.	PartNo	Description	P5 with Diamonds/QTY.
1	F5-565	Screw Pan Head M6 X 12 Phillips	6
2	G3-203	Galaxy 250 Control Box Lid	1
3	G3-946	Kholer 4.8hp Vertical Shaft	1
4	G3-260	Clutch 4HD - 3.5"	1
5	G3-202	Galaxy 250 Motor Mount	1
6	G3-204	Galaxy 250 Belt Cover	1
7	G3-193	Level Bubble Square	1
8	F3-283	M10 X 12 Hex Head Set Screw	6
9	F3-292	M10 X 20 Hex Head Set Screw	4
10	F3-317	M10 Spring Washer	21
11	F3-332	M10 Standard Washer	16
12	G3-508	Belt AX 33	1
13	G3-060	Cable Management Device 360mm	1
14	G3-036	Cable Gland M20	1
15	G3-031	Emergency Stop Switch Complete	1
16	G3-200	Galaxy 250 G3 Main Frame	1
17	F3-230	M6 X 10 Socket Head Cap Screw	2
18	G3-050	Rubber handle Grip	2
19	See Parts Dia.	Galaxy 250 Throttle Assembly	1
20	F3-345	M10 Standard Nut	2
21	F3-290	M10 X 55 Hex Head Set Screw	2
22	See Parts Dia.	Galaxy 250 Axle Assembly	1
23	See Parts Dia.	Galaxy 250 Main Bearing Unit - P5 & E3	1
24	F3-268	M10 X 25 Socket Head Countersunk Screw	4
25	See Parts Dia.	Galaxy 250 Shroud Assembly	1
26	F3-285	10 X 30	4
27	G3-230	Shroud Galaxy 250 68mm Deep	1
28	F3-246	10 X 25 Socket Head Cap Screw	6
29	G3-254	Cable Control For Petrol 5 (Inner and Outer)	1





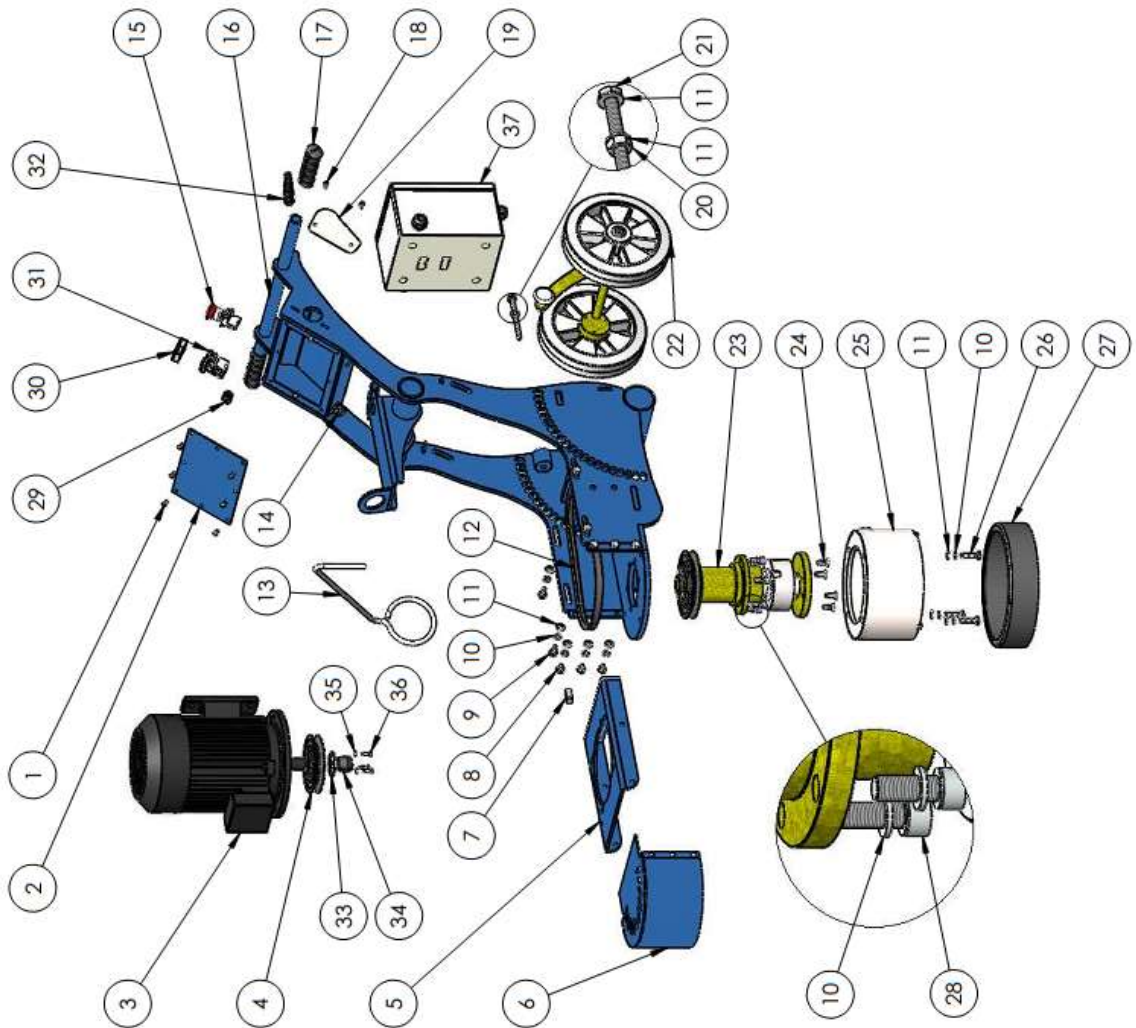
Parts Listing – E1

ITEM NO.	PartNo	DESCRIPTION	Galaxy 250 E1/Galaxy 250 E/QTY.
1	F3-565	Screw Pan Head M6 X 12 Phillips	8
2	G3-203	Galaxy 250 Control Box Lid	1
3	MET-032	Motor Ravel 4 Pole 2.2 Kw	1
4	G3-533	Pulley 3inch Aluminum	1
5	G3-202	Galaxy 250 Motor Mount	1
6	G3-204	Galaxy 250 Belt Cover	1
7	G3-193	Level Bubble Square	1
8	F3-283	M10 X 12 Hex Head Set Screw	6
9	F3-292	M10 X 20 Hex Head Set Screw	4
10	F3-317	M10 Spring Washer	21
11	F3-332	M10 Standard Washer	16
12	G3-060	Cable Management Device 360mm	1
13	G3-036	Cable Gland M20	1
14	G3-031	Emergency Stop Switch Complete	1
15	G3-200	Galaxy 250 G3 Main Frame	1
16	G3-050	Rubber handle Grip	2
17	F3-230	M6 X 10 Socket Head Cap Screw	2
18	G3-249	Galaxy 250 Throttle Cover	1
19	F3-345	M10 Standard Nut	2
20	F3-290	M10 X 55 Hex Head Set Screw	2
21	See Parts Dia.	Galaxy 250 Axle Assembly	1
22	See Parts Dia.	Galaxy 250 Main Bearing Unit - E1	1
23	F3-268	M10 X 25 Socket Head Countersunk Screw	4
24	See Parts Dia.	Galaxy 250 Shroud Assembly	1
25	F3-287	M10 X 40 Hex Head Set Screw	4
26	G3-230	Shroud Galaxy 250 68mm Deep	1
27	F3-246	10 X 25 Socket Head Cap Screw	6
28	G3-035	Plastic P Clip 12mm	1
29	G3-029	Protective Boot for Start Stop Switch	1
30	G3-030	Start Stop Switch Complete	1
31	B250036	Cord Grip	1
32	G3-049	Overload Boot	1
33	MET-003	Overload 13A	1
34	G3-033	SSL board	1
35	G3-032	SSR 80 A 240V	1
36	G3-507	AX 29 Belt	1



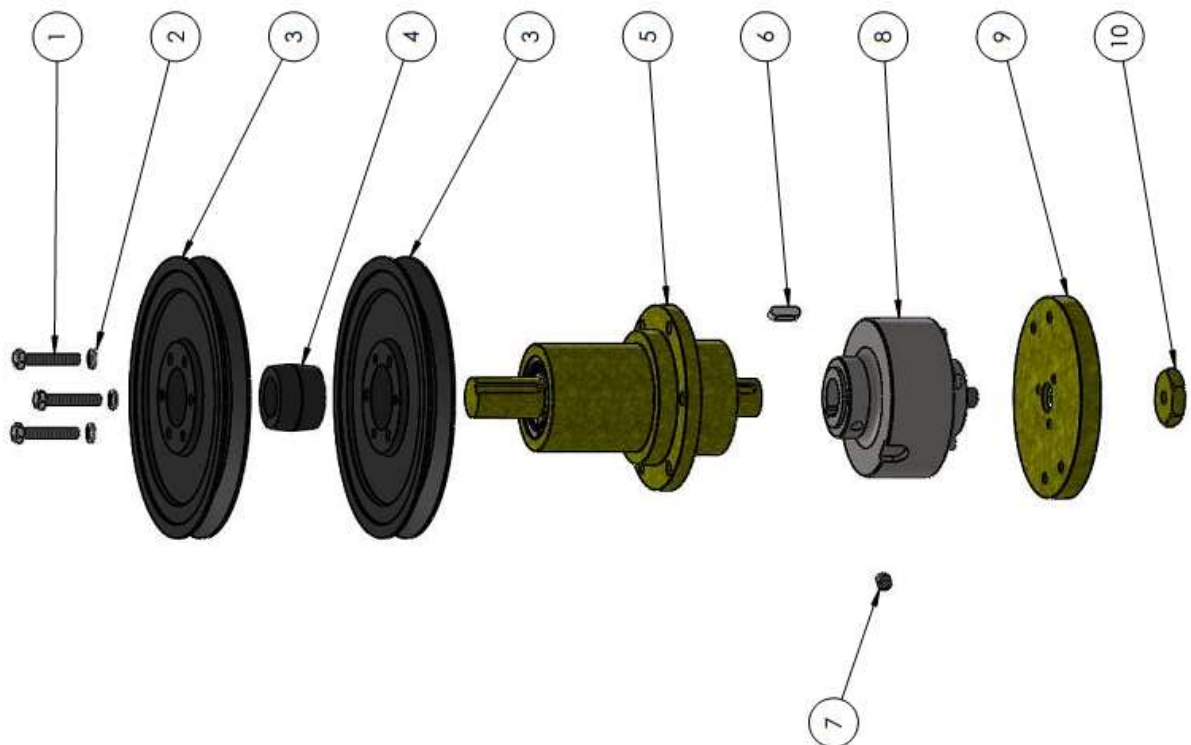
Parts Listing – E3

ITEM NO.	PartNo	DESCRIPTION	QTY.
1	F3-565	Screw Pan Head M6 X 12 Phillips	8
2	G3-203	Galaxy 250 Control Box Lid	1
3	G3-082	Motor 4.0 Kw 2 Pole 3 Phase	1
4	G3-537	Pulley Mi-Lock 140	1
5	G3-202	Galaxy 250 Motor Mount	1
6	G3-204	Galaxy 250 Belt Cover	1
7	G3-193	Level Bubble Square	1
8	F3-283	M10 X 12 Hex Head Set Screw	6
9	F3-292	M10 X 20 Hex Head Set Screw	4
10	F3-317	M10 Spring Washer	21
11	F3-332	M10 Standard Washer	16
12	G3-515	BX 38 Belt	1
13	G3-060	Cable Management Device 360mm	1
14	G3-036	Cable Gland M20	1
15	G3-031	Emergency Stop Switch Complete	1
16	G3-200	Galaxy 250 G3 Main Frame	1
17	G3-050	Rubber handle Grip	2
18	F3-230	M6 X 10 Socket Head Cap Screw	2
19	G3-249	Galaxy 250 Throttle Cover	1
20	F3-345	M10 Standard Nut	2
21	F3-290	M10 X 55 Hex Head Set Screw	2
22	See Parts Dia.	Galaxy 250 Axle Assembly	1
23	See Parts Dia.	Galaxy 250 Main Bearing Unit - E1	1
24	F3-268	M10 X 25 Socket Head Countersunk Screw	4
25	See Parts Dia.	Galaxy 250 Shroud Assembly	1
26	F3-287	M10 X 40 Hex Head Set Screw	4
27	G3-230	Shroud Galaxy 250 68mm Deep	1
28	F3-246	10 X 25 Socket Head Cap Screw	6
29	G3-035	Plastic P Clip 12mm	1
30	G3-029	Protective Boot for Start Stop Switch	1
31	G3-030	Start Stop Switch Complete	1
32	B250036	Cord Grip	1
33	G3-541	Pulley Mi-Lock No.2 Retainer	1
34	G3-543	Mi-Lock 28mm No.1 Center	1
35	F3-315	M6 Spring Washer	3
36	F3-279	M8 X 20 Hex Head Set Screw	3
37	See Parts Dia.	Galaxy 250 E3 Control Box	1



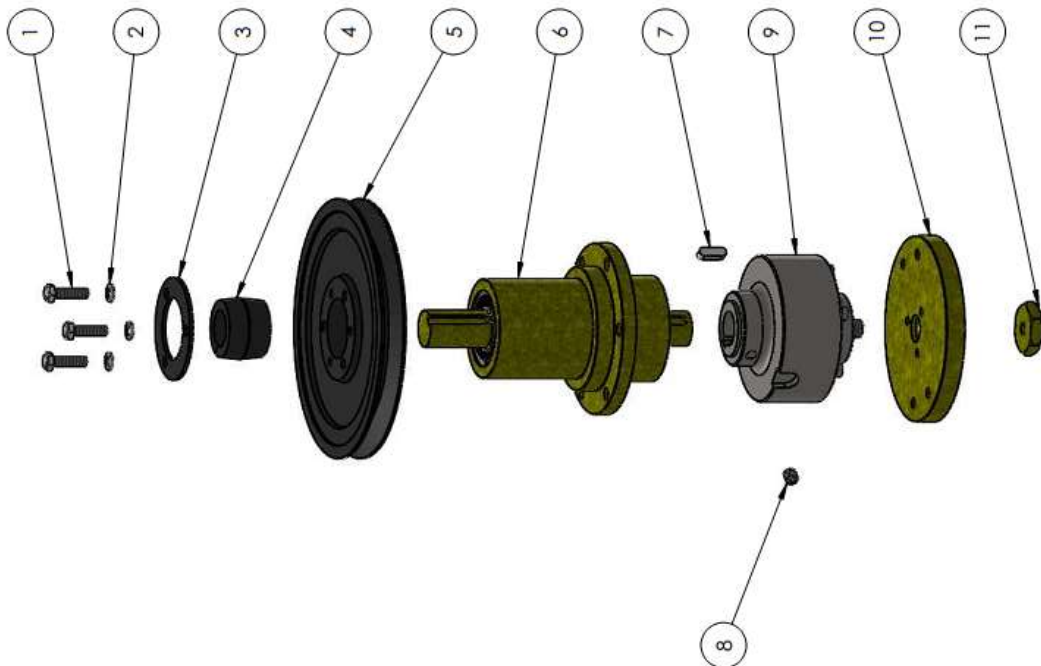
Parts Listing – P9 Bearing Assembly

ITEM NO.	PartNo	DESCRIPTION	Default/ QTY.
1	F3-280	M8 X 25 Hex Head Set Screw	3
2	F3-316	M8 Spring Washer	3
3	G3-538	Pulley Mi-Lock 200	2
4	G3-540	Pulley Mi-Lock 30mm Center	1
5	G3-206	Galaxy 250 Main Bearing Assembly	1
6	MET-066	Key For Keyway 7X8 X 23mm Long Rounded Ends	1
7	FS-430	Grub Screw M10 X 10	2
8	See Parts Dia.	Galaxy Spider Coupling Assembly	1
9	G3-215	Galaxy 250 HD Plate Adapter	1
10	MET-024	Meteor 250 Hex Nut M14	1



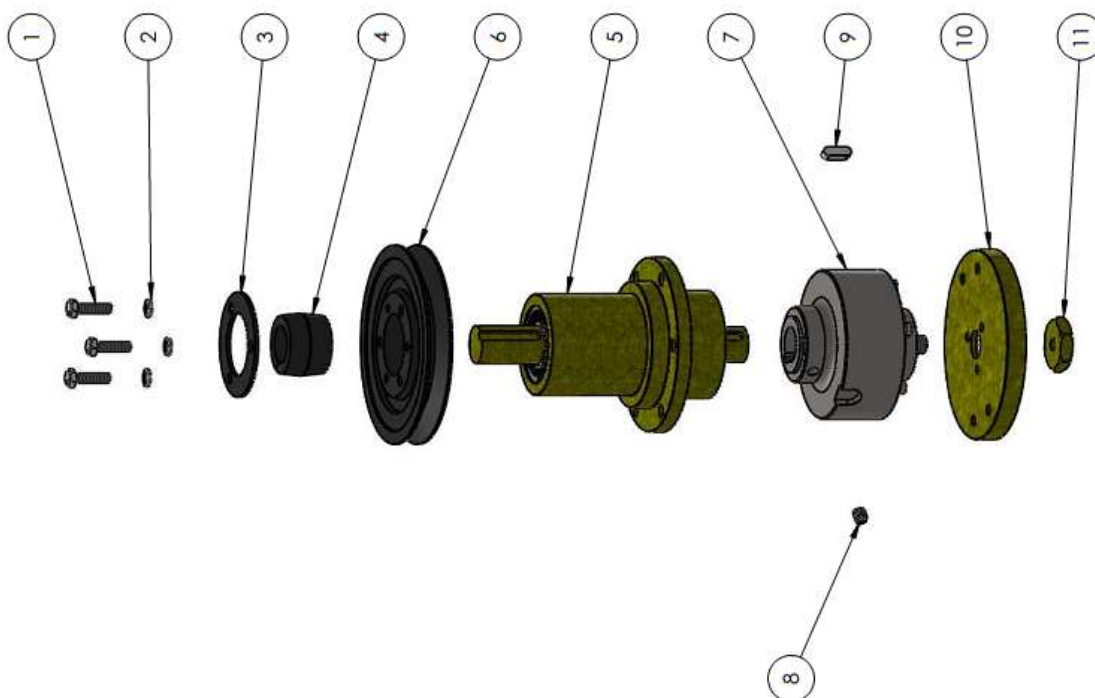
Parts Listing – P5 & E3 Bearing Assembly

ITEM NO.	PartNo	DESCRIPTION	Petrol 5Hp/QTY.
1	F3-280	M8 X 25 Hex Head Set Screw	3
2	F3-316	M8 Spring Washer	3
3	G3-541	Pulley Mi-Lock No.2 Retainer	1
4	G3-540	Pulley Mi-Lock 30mm Center	1
5	G3-538	Pulley Mi-Lock 200	1
6	G3-206	Galaxy 250 Main Bearing Assembly	1
7	MET-066	Key For Keyway 7X8 X 23mm Long Rounded Ends	1
8	FS-430	Grub Screw M10 X 10	2
9	See Part's Dia.	Galaxy Spider Coupling Assembly	1
10	G3-215	Galaxy 250 HD Plate Adapter	1
11	MET-024	Meteor 250 Hex Nut M14	1



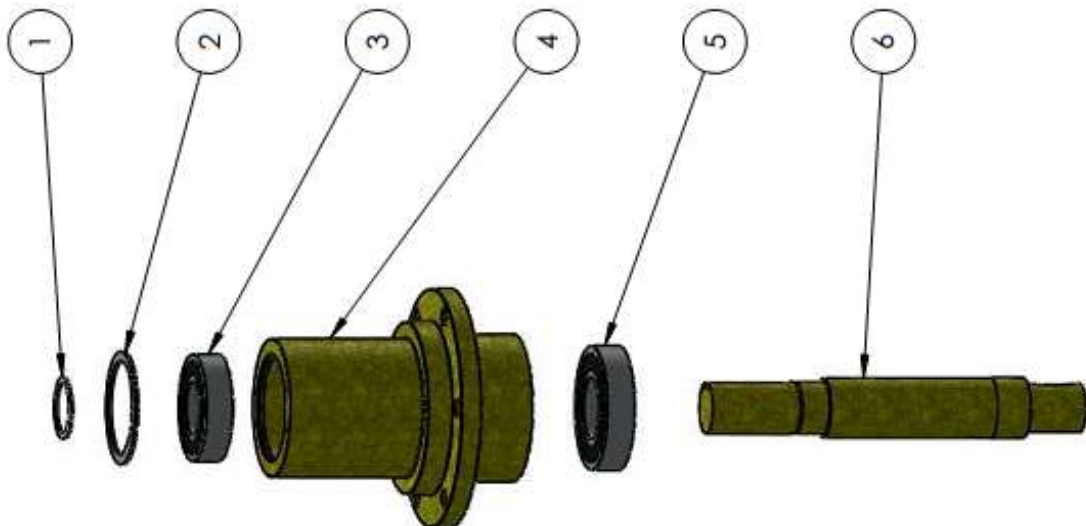
Parts Listing – P5 & E3 Bearing Assembly

ITEM NO.	PartNo	DESCRIPTION	Electric TE/QTY.
1	F3-280	M8 X 25 Hex Head Set Screw	3
2	F3-316	M8 Spring Washer	3
3	G3-541	Pulley Mi-Lock No.2 Retainer	1
4	G3-540	Pulley Mi-Lock 30mm Center	1
5	G3-206	Galaxy 250 Main Bearing Assembly	1
6	G3-537	Pulley Mi-Lock 140	1
7	See Parts Dia.	Galaxy Spider Coupling Assembly	1
8	FS-430	Grub Screw M10 X 10	2
9	MET-066	Key For Keyway 7X8 X 23mm Long Rounded Ends	1
10	G3-215	Galaxy 250 HD Plate Adapter	1
11	MET-024	Meteor 250 Hex Nut M14	1



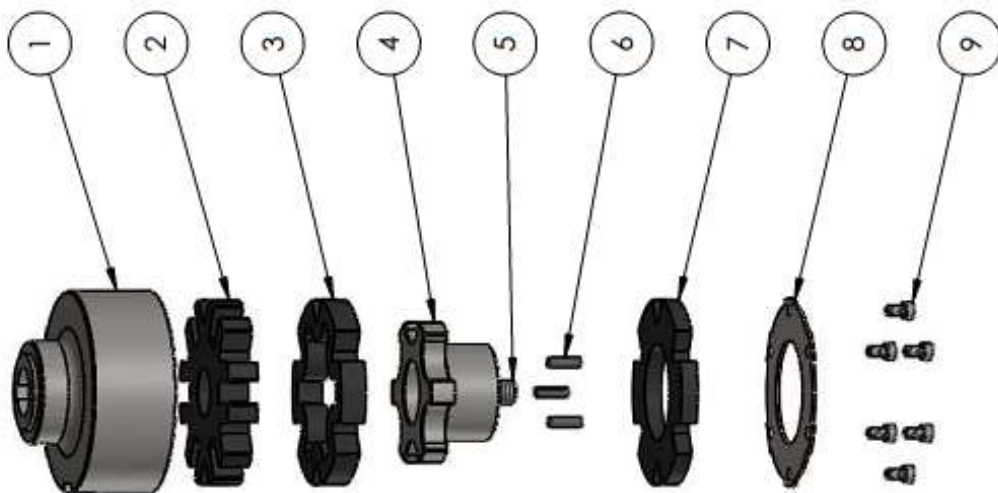
Parts Listing – Bearing Housing Assembly

ITEM NO.	PartNo	DESCRIPTION	QTY.
1	FS-825	Circlip External 30x1.5	1
2	FS-894	Circlip Internal 62	1
3	G3-527	Bearing 30 X 60 X 16	1
4	G3-208	Galaxy 250 Main Bearing Housing Outer	1
5	G3-528	Bearing 35 X 72 X 17	1
6	G3-207	Galaxy 250 Main Bearing Housing Shaft	1



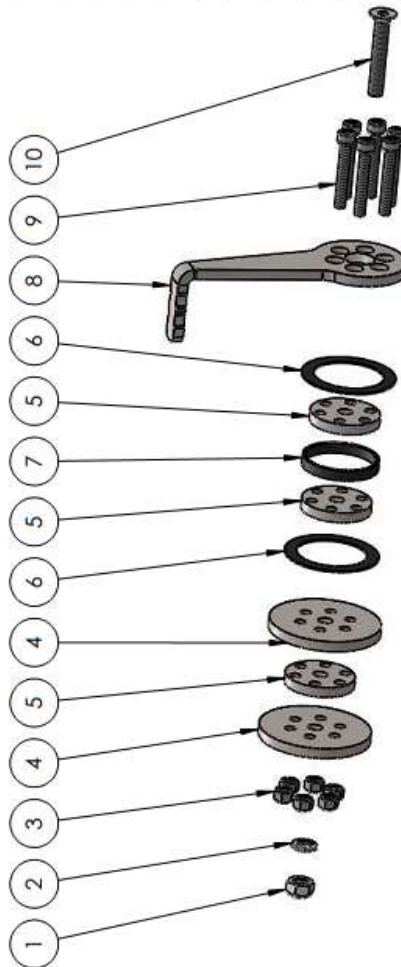
Parts Listing – Coupling Assembly

ITEM NO.	PartNo	DESCRIPTION	Galaxy 250/QTY.
1	MET-090	Spider Coupling Outer Stainless	1
2	G3-240	Spider Coupling Part 1 - 20mm Thick SAR	1
3	G3-241	Spider Coupling Part 2 - 15mm Thick SAR	1
4	MET-091	Spider Coupling Inner Stainless	1
5	F3-308	M14 X 40 Hex Head Set Screw	1
6	G3-123	Roll Pin 6 X 20	3
7	G3-242	Spider Coupling Part 3 - 8mm Thick SAR	1
8	MET-092	Spider Coupling Stainless Retainer Plate	1
9	F3-230	M6 X 10 Socket Head Cap Screw	6
10	F3-319	M14 Spring Washer	1



Parts Listing – Throttle Assembly

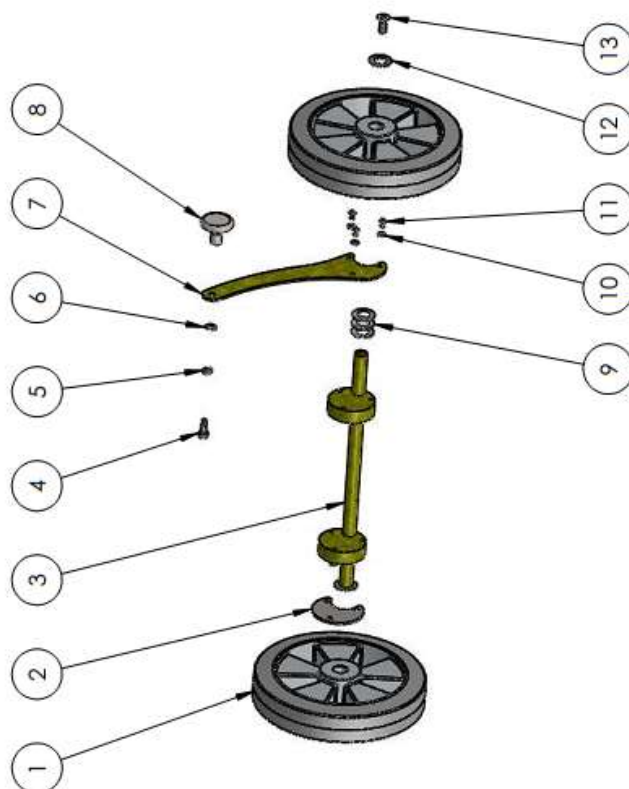
ITEM NO.	PartNo	DESCRIPTION	QTY.
1	F3-344	M8 Standard Nut	1
2	F3-316	M8 Spring Washer	1
3	F3-363	M6 Nyloc Nut	6
4	G3-248	Galaxy 250 Throttle Large Disc 64OD	2
5	G3-246	Galaxy 250 Throttle Small Disc 40 OD	3
6	G3-251	Galaxy Throttle Lever Thrust Washer	2
7	G3-250	Galaxy Throttle Lever Bush Bearing	1
8	G3-252	Galaxy 250 G3 Throttle Handle	1
9	F3-232	M6 X 40 Socket Head Cap Screw	6
10	F3-274	M8 X 50 Socket Head Countersunk Screw	1





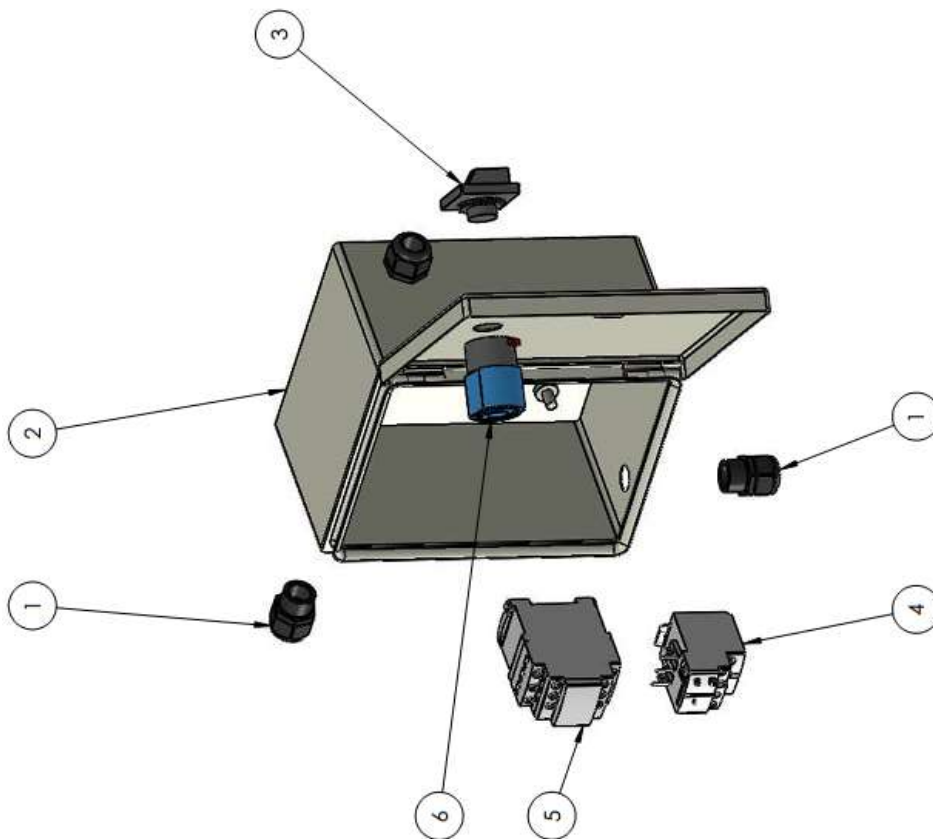
Parts Listing – Axle Assembly

ITEM NO.	PartNo	DESCRIPTION	QTY.
1	G3-176	250mm Wheel	2
2	G3-173	Axle Retainer	1
3	G3-171	Galaxy 250 Axle	1
4	F3-238	M8 X 20 Socket Head Cap Screw	1
5	G3-178	Generation3 Stainless Axle Knob Spacer	1
6	F3-331	M8 Standard Washer	1
7	G3-172	Axle Lever	1
8	G3-175	Generation3 Stainless Axle Knob	1
9	F3-335	M19.5 Standard Washer	3
10	F3-315	M6 Spring Washer	6
11	F3-210	6 X 12 Button Head	6
12	F3-338	M18 Standard Washer	2
13	F3-268	M10 X 25 Socket Head Countersunk Screw	2



Parts Listing – E3 Electrical Assembly

ITEM NO.	PartNo	DESCRIPTION	Galaxy E3/QTY.
1	G3-036	Cable Gland M20	3
2	RP-071	Enclosure 200x250x150 (GAL 250-E3)	1
3	G3-428	Reversing Switch Actuator	1
4	G3-389	Overload 7-10A LRD14	1
5	G3-386	Contactors 5.5 kw 12A 415 VAC coil	1
6	G3-427	Reversing Switch Mechanism only	1



## Warranty

This Warranty covers the GALAXY Machines for periods noted in the table below.

\* Whichever comes first

All GALAXY Machines are offered with a 2 year Limited manufacturer's Warranty against defects. This does not mean the machine is indestructible or will not require replacement parts as there are some parts which are normal replacement items and the wear is not a fault of manufacture. The hour meter on the machine is for the consumer's reference and not necessarily to measure warranty periods. Floorex or their nominated repairers will assess any problem irrespective of the hour meter at their discretion.

Our goods come with guarantees that cannot be excluded under the Australian Consumer Law. You are entitled to a replacement or refund for a major failure and compensation for any other reasonably foreseeable loss or damage. You are also entitled to have the goods repaired or replaced if the goods fail to be of acceptable quality and the failure does not amount to a major failure.

As these goods are not of a kind ordinarily acquired for domestic, household or personal use, Floorex is entitled to limit their liability to sellers (companies or individuals who resell the machine) to the cost of replacing the goods, having the goods repaired or obtaining equivalent goods (whichever is lowest).

<b>Machine/Item</b>	<b>Period</b>	<b>Notes and additional Options</b>
All GALAXY machines	2 years	
Inverters or Speed Controllers	2 year or 500 hours or as per manufacturer's warranty*	
Petrol Motors	Manufacturer's warranty	Warranted by the motor manufacturer

Consumer Guarantees are a contract between the seller and the consumer. For this reason if goods are purchased to be resold or to be transformed into a product that is sold, the consumer guarantees between Floorex and the re-seller will not apply.

Compensation - Manufacturers are not responsible for problems with goods beyond their control. For this reason Floorex will not be held liable for:

1. An act, default, omission or representation made by some other person (excluding an employee or agent of the manufacturer).
2. Contract penalties such as promises for completion date of jobs. These are at the risk of the parties involved.
3. A cause independent of human control that occurs after the goods left the manufacturer's control

The consumer guarantees require you to return goods to the place where they were purchased unless it is not reasonable for you to do so. For example, it would be reasonable to expect you to return an item if you would be able to easily take it away with you when you purchased it. However, if the item is large, heavy or bulky or needed to be delivered, the seller should arrange for this to be returned.

For this reason for timely repairs and as little downtime for the consumer, Floorex may offer to have the machine repaired by a nominated repairer close by.



## Floorex Products

Your complete supplier  
of all your concrete  
surface preparation  
needs

- Diamond grinders
- Dust extraction
- Shotblasters
- Screed mixers
- Diamonds
- Floor Scrapers
- Coating application

FLOOREX  
PRODUCTS  
11 Jennings Road  
Swan Hill VIC.  
3585

Web: [www.floorex.com.au](http://www.floorex.com.au)  
Email: [sales@floorex.com.au](mailto:sales@floorex.com.au)