

Mastiff 200

SAFETY & OPERATORS MANUAL

& PARTS LISTING

CAUTION: Read the instruction manual before using the appliance.



Mastiff 200

Table of Contents

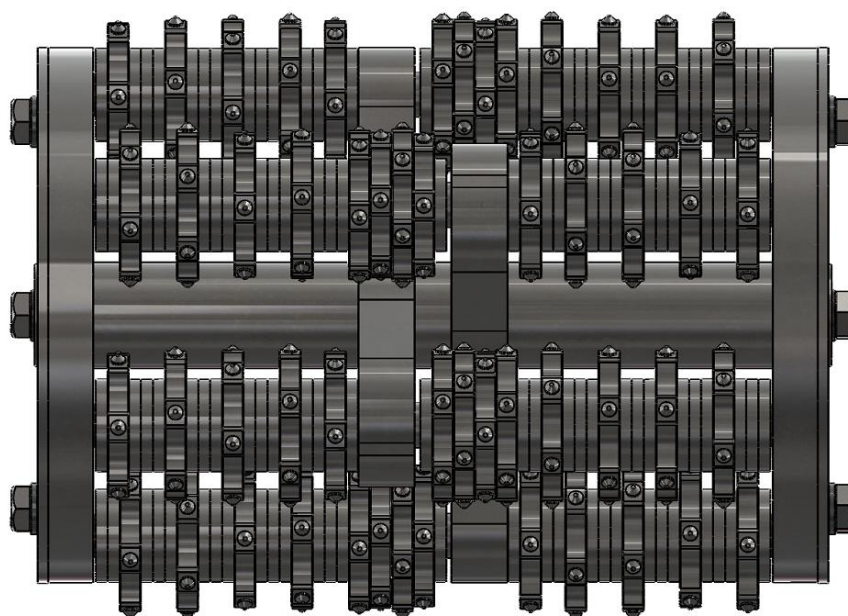
| | |
|--|----|
| Specifications | 2 |
| Drum Setups | 2 |
| Safety instructions | 3 |
| Safety instructions | 4 |
| Operating instructions | 5 |
| Operating instructions | 7 |
| Electrical safety | 8 |
| Parts Listing - Main Chassis - Petrol | 9 |
| Parts Listing - Main Chassis - 1 Phase | 10 |
| Parts Listing - Main Chassis - 3 Phase | 11 |
| Parts Listing - Inner Chassis - Petrol | 12 |
| Parts Listing - Inner Chassis - Petrol List | 13 |
| Parts Listing - Inner Chassis - 1 Phase | 14 |
| Parts Listing - Inner Chassis - 1 Phase List | 15 |
| Parts Listing - Inner Chassis - 3 Phase | 16 |
| Parts Listing - Inner Chassis - 3 Phase List | 17 |
| Parts Listing - Bearings & Shaft | 18 |
| Parts Listing - Lifting Mechanism | 19 |
| Parts Listing - Drum and Cutters | 20 |
| Wiring Diagram 1 Phase | 21 |
| Wiring Diagram 3 Phase | 22 |
| Maintenance Schedule | 23 |

Mastiff 200

Specifications

| Mastiff 200 | |
|--------------------|---|
| Weight | 138kg |
| Dimensions | 1000 x 617 x 1037 (Length X Width x Height) |
| Rated Voltage | 9Hp Petrol / 230 Vac / 415 Vac |
| Rated Watts | NA / 2.2kW / 4kw / 5.5kw |
| Preparation Path | 200mm |

Drum Setups



| Typical Drum Setups | | |
|----------------------------|----------------|----------------|
| Setup | Cutters | Spacers |
| General Purpose | 78 Cutters | 171 |
| Fine | 96 | 142 |

Mastiff 200

Safety instructions

1. Read and understand the instructions on the machine and in this manual and engine manual (if applicable). Different models may have different parts and controls.
2. Equipment should only be operated by trained personnel, in good physical condition and mental health (not fatigued). The operator and maintenance personnel must physically be able to handle the bulk weight and power of this machine.
3. This is a **one person machine**. Maintain a safe operating distance to other personnel. Remember 'one machine, one operator'.
4. This equipment is intended for commercial use.
5. For the operators' safety and the safety of others, always keep all guards and shrouds in place.
6. Never start or run machine when unattended.
7. This machine is intended for use on floor surfaces only.
8. Never start or run machine with handle folded or when disk(s) are not in contact with the surface.
9. Do not lend or rent machine without the operating instructions for the machine (and the engine, if applicable).
10. Wear clothing suitable for the job and for the workplace including, safety shoes, hard hat, hearing protection, non-fogging vented safety goggles, and dust mask suitable for dust.
11. Keep body parts or any loose clothing away from moving parts. Failure to comply could result in bodily injury.

Mastiff 200

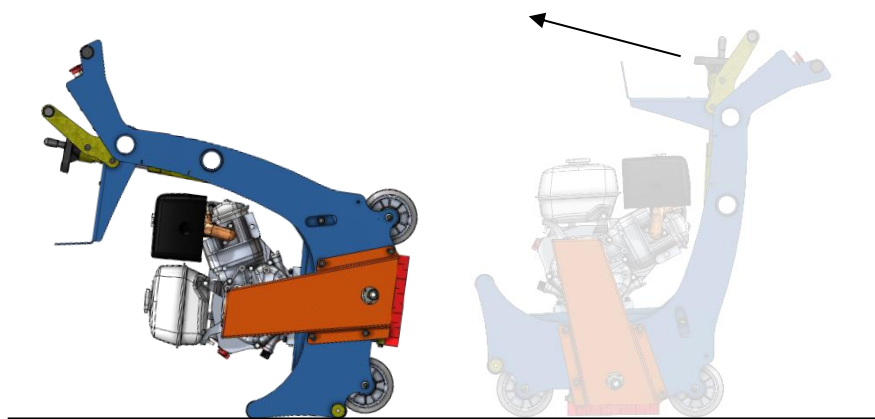
Safety instructions

12. Do not modify machine in any way. Only use genuine MASTIFF 200 parts and accessories.
13. Repairs should be performed by qualified persons only.
14. Ensure parts have stopped moving and disconnect power or spark plug when servicing or changing blades or accessories.
15. Never operate machine in rain or if heavy moisture is present. (other than under the shroud)
16. Do not operate MASTIFF 200 with any guards, shrouds, covers or doors removed or open.
17. The MASTIFF 200 can produce sound pressure levels greater than 85db. The operator must wear approved safety ear protection.
18. Do not allow the supply cord to come in contact with the cutting blade/head or other moving parts of this machine.
19. Petrol is extremely flammable and poisonous. Petrol should only be dispensed in well ventilated areas, and only when engine is cool.
20. **WARNING! POISONOUS EXHAUST GASES.** Do not operate petrol powered equipment without adequate ventilation. Carbon monoxide is an invisible odorless gas that can harm or can kill you.
21. **WARNING!** Breathable silica may be generated by use and maintenance of this machine. Silica can cause severe and permanent lung damage, cancer, and other serious diseases. Do not breathe the dust. Do not rely on your sight or smell to determine if dust is in the air. Silica may be in the air without a visible dust cloud. If air monitoring for silica is not provided by your employer at your work site, you must wear appropriate respiratory protection when operating or maintaining this equipment. Consult your employer for proper respiratory protection.

Mastiff 200

Operating instructions

1. Wear clothes suitable for the job and for the work place including, safety shoes, hard hat, hearing protection, non-fogging vented safety goggles, and dust respirator suitable for dust.
2. **WARNING! POISONOUS EXHAUST GASES.** Do not operate petrol powered equipment without adequate ventilation. Carbon monoxide is an invisible odorless gas that can harm or can kill you.
3. Be sure all equipment is tested and tagged prior to use on any job.
4. Inspect entire area to be ground before grinding and remove any bolts or concrete nails (etc.) that could damage diamond tooling or machine which could cause a hazardous situation.
5. Ensure there are no obstacles or existing structures that could present a hazard to the operator. If so, take necessary action to eliminate the hazard.
6. Install appropriate tooling into the machine. Only use genuine MASTIFF 200 tooling. Failure to comply could result in bodily injury.
7. Stand in front of the machine, put one foot on the front nudge bar and use the lift hook to tilt the machine over onto its front.



- 8.
9. Inspect and install appropriate tooling and tighten using the left hand nuts. One at a time.

Mastiff 200

Operating instructions

10. Tilt machine back onto its wheel in the opposite manner to above.
11. Wind the height adjustment knob fully clockwise and pull the fast raise lower lever towards you.
12. Connect machine to suitable power outlet. Only use heavy duty power lead suitable for high current use (minimum 2.5 mm² cable), no longer than 20 meters. (For petrol powered equipment, refer to engine manual for startup procedure).
13. If no power is available within the specified distance, have a qualified person install a suitable power outlet closer to your work. Alternatively use 4mm² cable for up to 50 meters.
14. Connect a suitable dust extractor to the machine via a 50mm flexible hose. The machine is designed to take the standard FLOOREX 50mm hose ends to make connection of dust extractors easy and hassle free. Alternatively, water spray using the supplied water connection point can be used to suppress dust.
15. Keep machine clear of drainage pits and grates or any such hazard. Failure to comply could result in bodily injury and or could damage the machine or property.
16. Switch on the dust extractor or water spray.
17. Hold the handles firmly and switch the machine on by pushing the green button. Or start the petrol engine.
18. If the over-current device trips it indicates a problem. (Undersize power lead or poor power to GPO outlet). Refer above for recommendations on power leads. Rectify problem or decrease load on grinder by using tooling with more surface area. **Continuing to use the MASTIFF 200 when constant tripping occurs, VOIDS THE WARRANTY!**

Mastiff 200

Operating instructions

19. This machine is designed to operate with the wheels in contact with the floor at all times. **Do not operate with wheels off the floor.**
20. Push the fast raise lower lever forward then wind the depth control anti clockwise to lower to tools onto the floor.
21. Once the tools start touching the floor you can rotate the hand wheel a total of 4 more turns for maximum cut depth.
22. This equates to a maximum cutting depth of around 3-4mm. Lowering the machine further will risk damaging the drum and fails and shafts.

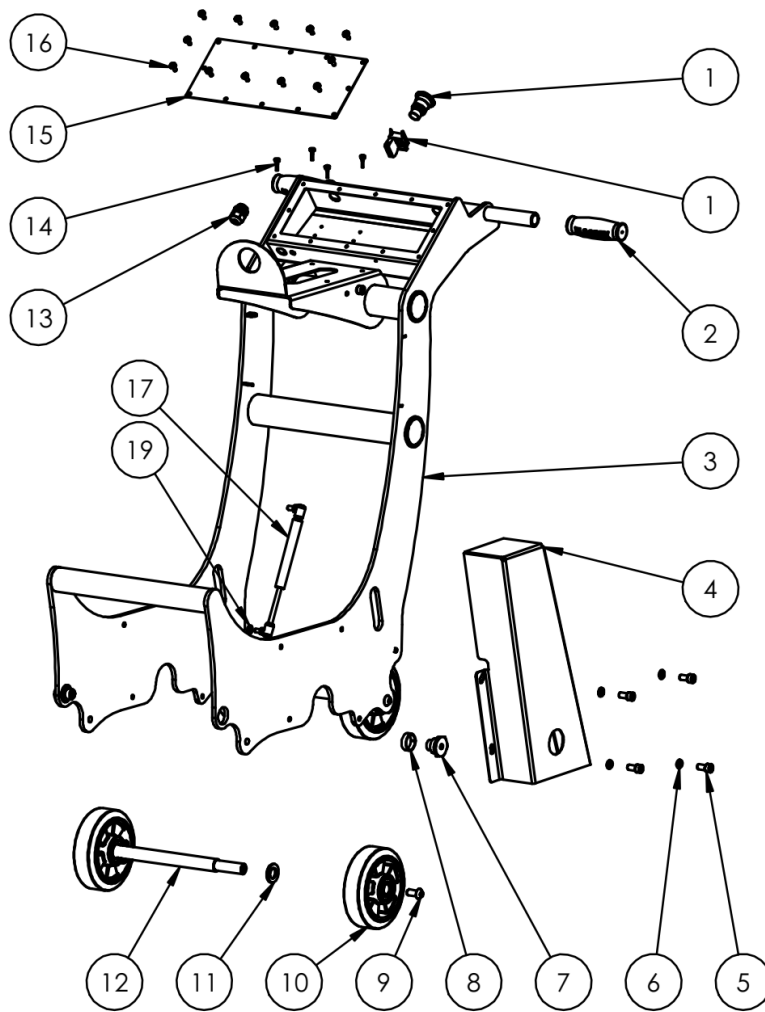
Mastiff 200

Electrical safety

1. All electrical maintenance and repairs to be carried out by qualified persons only.
2. **CAUTION** - Line terminals may be alive when main switch is in the off position. Disconnect all power at source before performing any maintenance or repairs.
3. **WARNING - DO NOT** operate the machine with any electrical panels open.
4. **WARNING** - The MASTIFF 200 has an overload switch and will trip when under excessive load and will not allow the machine to be switched on if it is overloaded. (Overload will need to be reset when safe to do so). **Continuing to use the MASTIFF 200 when constant tripping occurs, VOIDS THE WARRANTY!**
5. Never operate machine in the rain or if heavy moisture is present.
6. The overcurrent device is there to protect you and the machine from harm. **DO NOT** alter or adjust the overload in any way. If it is faulty, only replace with original part that is identical to the faulty one.
7. Never bypass over-current devices in this machine.
8. Never connect or disconnect power cables with voltage present or while under load.
9. Disconnect all power connections and observe lock out / tag out procedures before attempting to carry out any maintenance or repair on any equipment.
10. Avoid any contact with any rotating parts or driven parts.
11. Never use equipment that has not been tested and tagged (including cords).
12. Do not operate MASTIFF 200 with any covers or doors removed or open.
13. Before connecting the machine to power, check the condition of all power leads and cables on, or used in conjunction with the machine. **DO NOT USE** it if any fault(s) cuts; wear marks, Bare wires out of plugs or sockets, etc. Get qualified persons to repair and re-tag it as required by regulations in your country.

Mastiff 200

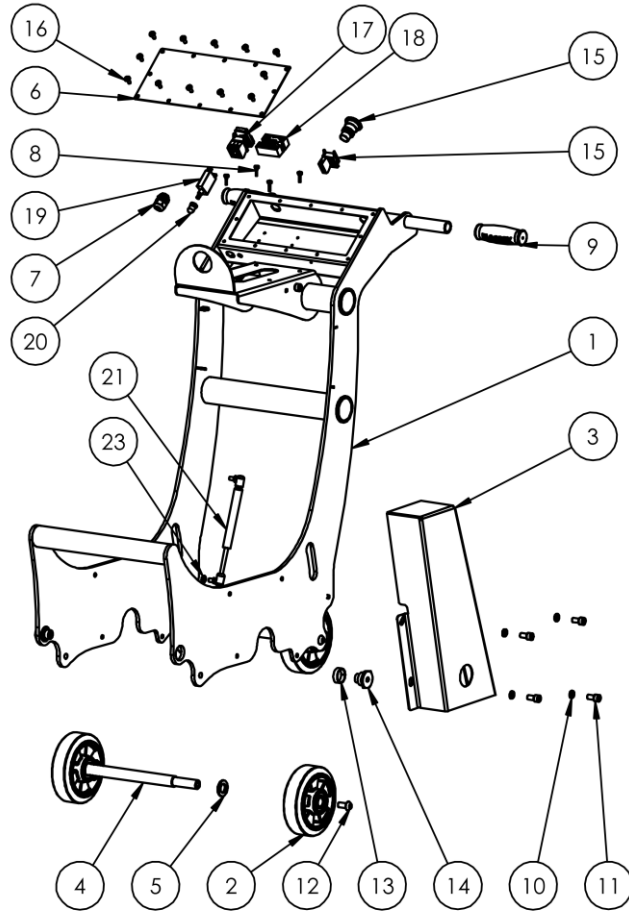
Parts Listing - Main Chassis - Petrol



| ITEM NO. | PartNo | DESCRIPTION | |
|----------|---------|-----------------------------------|----|
| 1 | G3-031 | Emergency Stop Switch Complete | 1 |
| 2 | G3-350 | Floorex Hand Grip | 2 |
| 3 | MAF-010 | Mastiff 200 Main Outer Chassis | 1 |
| 4 | MAF-015 | Mastiff 200 Main Belt Guard | 1 |
| 5 | FS-245 | M10 X 20 Socket Head Cap Screw | 6 |
| 6 | FS-317 | M10 Spring Washer | 6 |
| 7 | MET-342 | Meteor Chassis Pivot Nut | 2 |
| 8 | MET-341 | Meteor 250 Generation3 Pivot Bush | 2 |
| 9 | FS-222 | 12 X 25 Button Head | 4 |
| 10 | MET-016 | Wheel 160mm Grey Rubber 20mm ID | 4 |
| 11 | FS-335 | M20 Standard Washer | 4 |
| 12 | MAF-050 | Mastiff Front and Rear Axle | 2 |
| 13 | G3-036 | Cable Gland M20 | 1 |
| 14 | MAF-120 | Rubber Bumper Stop | 4 |
| 15 | MAF-020 | Mastiff 200 Control Box Lid | 1 |
| 16 | FS-565 | Screw Pan Head M6 X 12 Phillips | 12 |
| 17 | MAF-070 | Mastiff 200 Gas Strut | 2 |
| 18 | FS-345 | M10 Standard Nut | 2 |
| 19 | FS-331 | M8 Standard Washer | 2 |

Mastiff 200

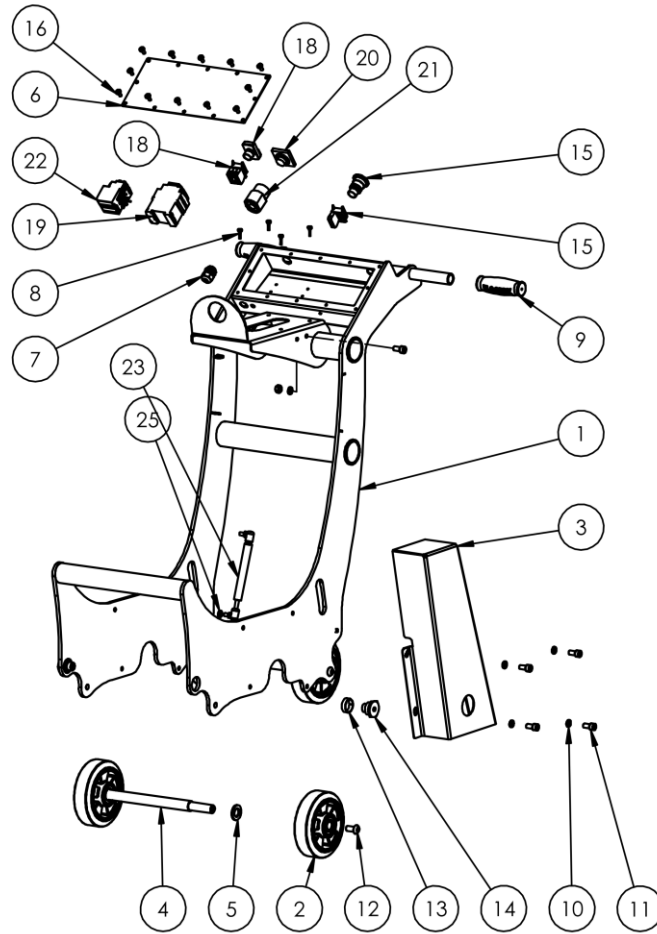
Parts Listing - Main Chassis - 1 Phase



| ITEM NO. | PartNo | DESCRIPTION | QTY. |
|----------|---------|-----------------------------------|------|
| 1 | MAF-010 | Mastiff 200 Main Outer Chassis | 1 |
| 2 | MET-016 | Wheel 160mm Grey Rubber 20mm ID | 4 |
| 3 | MAF-015 | Mastiff 200 Main Belt Guard | 1 |
| 4 | MAF-050 | Mastiff Front and Rear Axle | 2 |
| 5 | FS-335 | M20 Standard Washer | 4 |
| 6 | MAF-020 | Mastiff 200 Control Box Lid | 1 |
| 7 | G3-036 | Cable Gland M20 | 1 |
| 8 | MAF-120 | Rubber Bumper Stop | 4 |
| 9 | G3-350 | Floorex Hand Grip | 2 |
| 10 | FS-317 | M10 Spring Washer | 6 |
| 11 | FS-245 | M10 X 20 Socket Head Cap Screw | 6 |
| 12 | FS-222 | 12 X 25 Button Head | 4 |
| 13 | MET-341 | Meteor 250 Generation3 Pivot Bush | 2 |
| 14 | MET-342 | Meteor Chassis Pivot Nut | 2 |
| 15 | G3-031 | Emergency Stop Switch Complete | 1 |
| 16 | FS-565 | Screw Pan Head M6 X 12 Phillips | 12 |
| 17 | G3-030 | Start Stop Switch Complete | 1 |
| 18 | G3-653 | SSR with Internal 3 Wire control | 1 |
| 19 | MET-003 | Overload 13A | 1 |
| 20 | G3-049 | Overload Boot | 1 |
| 21 | MAF-070 | Mastiff 200 Gas Strut | 2 |
| 22 | FS-345 | M10 Standard Nut | 2 |
| 23 | FS-331 | M8 Standard Washer | 2 |

Mastiff 200

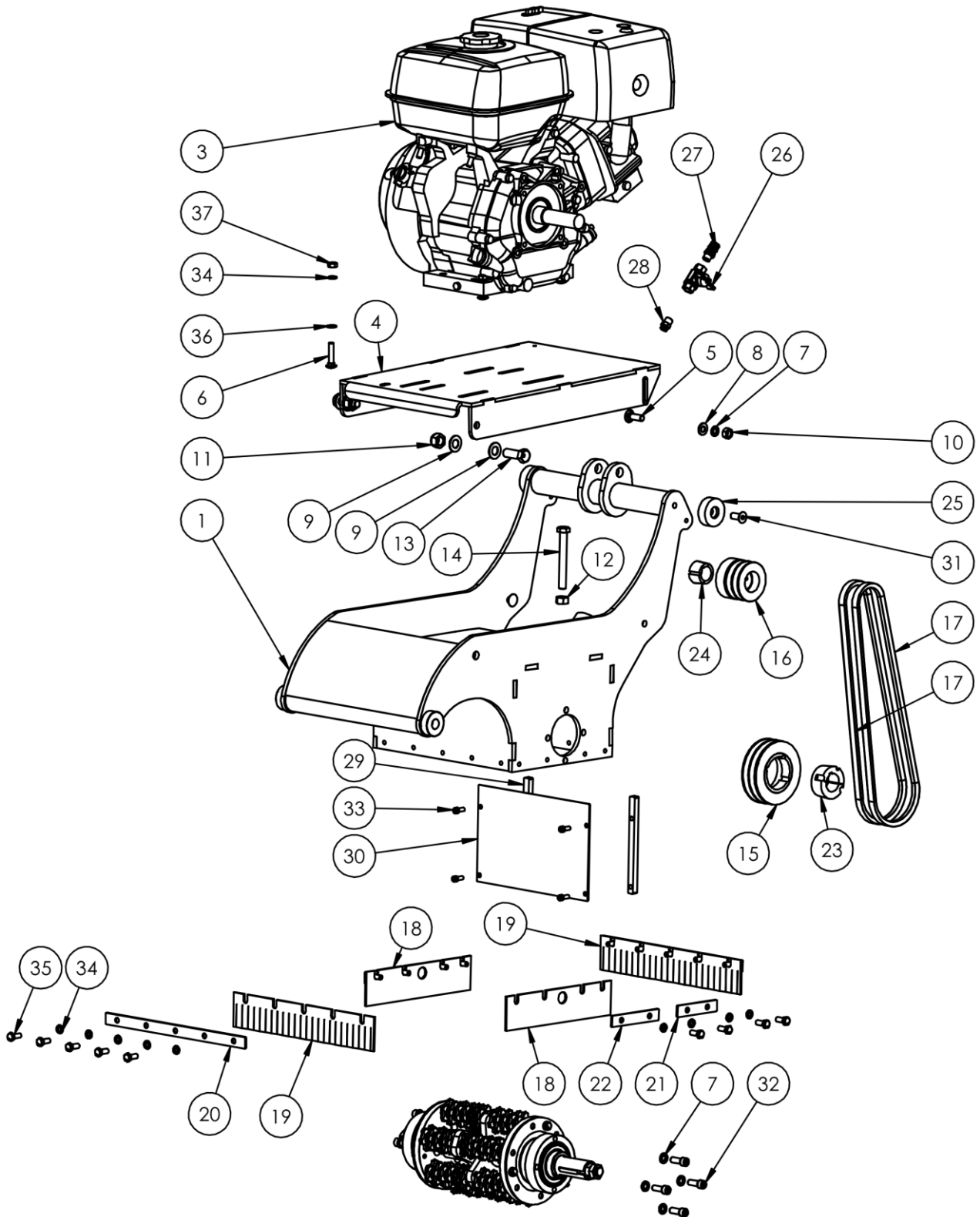
Parts Listing - Main Chassis - 3 Phase



| ITEM NO. | PartNo | DESCRIPTION | QTY. |
|----------|---------|-----------------------------------|------|
| 1 | MAF-010 | Mastiff 200 Main Outer Chassis | 1 |
| 2 | MET-016 | Wheel 160mm Grey Rubber 20mm ID | 4 |
| 3 | MAF-015 | Mastiff 200 Main Belt Guard | 1 |
| 4 | MAF-050 | Mastiff Front and Rear Axle | 2 |
| 5 | FS-335 | M20 Standard Washer | 4 |
| 6 | MAF-020 | Mastiff 200 Control Box Lid | 1 |
| 7 | G3-036 | Cable Gland M20 | 1 |
| 8 | MAF-120 | Rubber Bumper Stop | 4 |
| 9 | G3-350 | Floorex Hand Grip | 2 |
| 10 | FS-317 | M10 Spring Washer | 6 |
| 11 | FS-245 | M10 X 20 Socket Head Cap Screw | 6 |
| 12 | FS-222 | 12 X 25 Button Head | 4 |
| 13 | MET-341 | Meteor 250 Generation3 Pivot Bush | 2 |
| 14 | MET-342 | Meteor Chassis Pivot Nut | 2 |
| 15 | G3-031 | Emergency Stop Switch Complete | 1 |
| 16 | FS-565 | Screw Pan Head M6 X 12 Phillips | 12 |
| 17 | FS-553 | M4 X 12 Screw Pan Head Phillips | 2 |
| 18 | G3-030 | Start Stop Switch Complete | 1 |
| 19 | G3-386 | Contactor 12A 415 VAC | 1 |
| 20 | G3-428 | Reversing Switch Actuator | 1 |
| 21 | G3-427 | Reversing Switch Mechanism only | 1 |
| 22 | G3-389 | Overload 7-10A LRD14 | 1 |
| 23 | MAF-070 | Mastiff 200 Gas Strut | 2 |
| 24 | FS-345 | M10 Standard Nut | 2 |
| 25 | FS-331 | M8 Standard Washer | 2 |

Mastiff 200

Parts Listing - Inner Chassis - Petrol



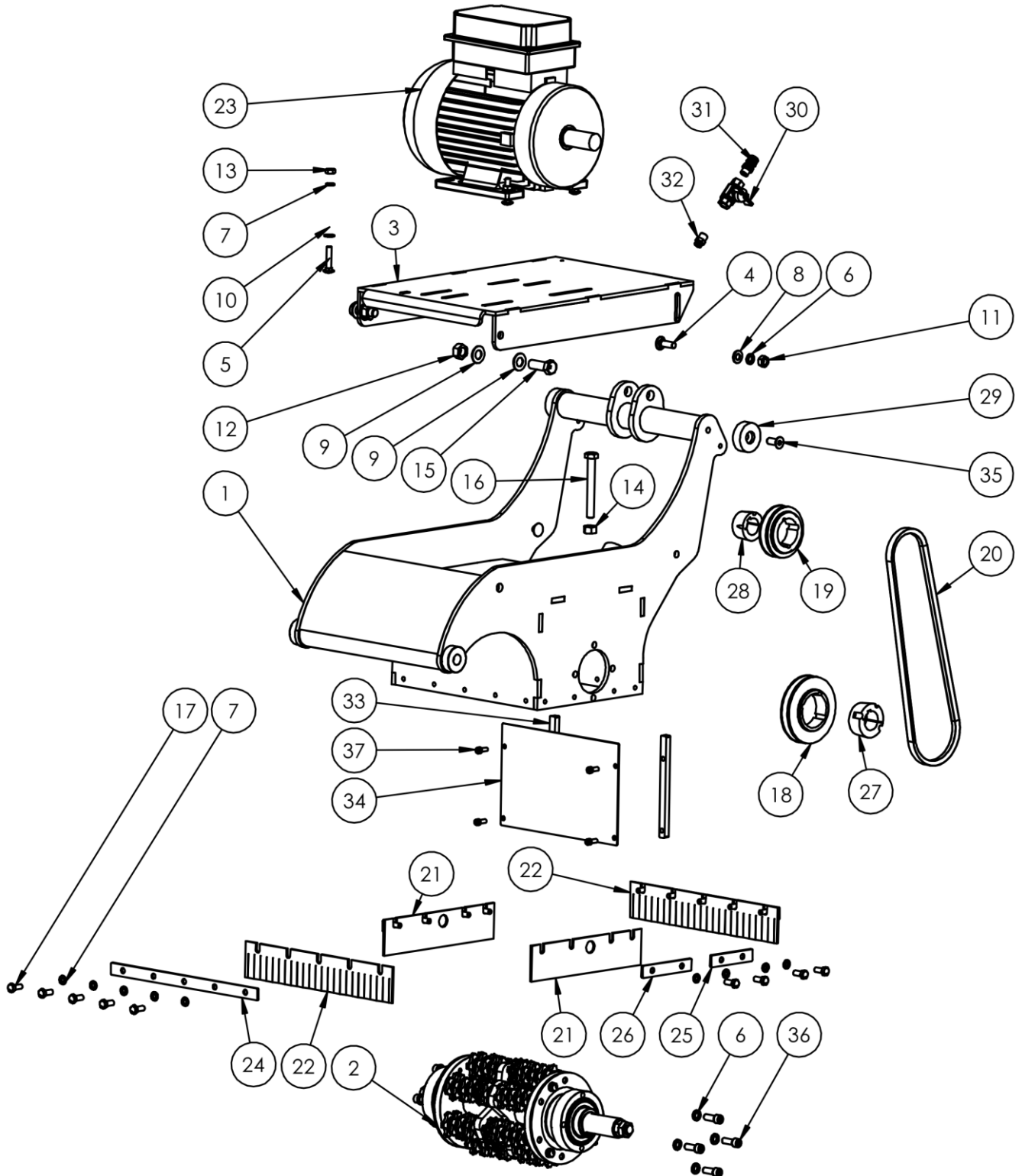
Mastiff 200

Parts Listing - Inner Chassis - Petrol List

| ITEM NO. | PartNo | DESCRIPTION | |
|----------|---------|--|----|
| 1 | MAF-005 | Mastiff 200 Inner Chassis | 1 |
| 2 | | See Parts Lsting | 1 |
| 3 | G3-416 | GX-270 Honda Standard Rope Start 1" Shaft | 1 |
| 4 | MAF-025 | Mastiff 200 Motor Mount | 1 |
| 5 | FS-455 | Cup Head Bolt M10 X 30 | 2 |
| 6 | FS-453 | Cup Head Bolt M8 X 40 | 4 |
| 7 | FS-317 | M10 Spring Washer | 10 |
| 8 | FS-332 | M10 Standard Washer | 2 |
| 9 | FS-334 | M14 Standard Washer | 4 |
| 10 | FS-345 | M10 Standard Nut | 2 |
| 11 | FS-367 | M14 Nyloc Nut | 2 |
| 12 | FS-346 | M12 Standard Nut | 1 |
| 13 | FS-308 | M14 X 40 Hex Head Set Screw | 2 |
| 14 | FS-301 | M10 X 100 Hex Head Set Screw | 1 |
| 15 | MAF-111 | Pulley 1610 106mm x 2A | 1 |
| 16 | MAF-126 | Pulley 1108 63mm 2A | 1 |
| 17 | G3-506 | AX 37 Belt | 2 |
| 18 | MAF-030 | Mastiff 200 Skirt Side | 2 |
| 19 | MAF-032 | Mastiff 200 Skirt Front And Back | 2 |
| 20 | MAF-035 | Mastiff 200 Skirt Front And Back Retainer | 2 |
| 21 | MAF-039 | Mastiff 200 Skirt Side Retainer 80mm Long | 2 |
| 22 | MAF-037 | Mastiff 200 Skirt Side Retainer 100mm Long | 2 |
| 23 | MAF-110 | Taper Lock Bush 1610 x 1-1/4" Bore | 1 |
| 24 | MAF-125 | Taper Lock Bush 1108 x 1" Bore | 1 |
| 25 | MAF-063 | Mastiff 200 - Chassis Guide Spacer | 2 |
| 26 | G3-153 | Ball Valve 1/4 Butterfly | 1 |
| 27 | MET-063 | Brass Tap adapter | 1 |
| 28 | G3-154 | 1/4" male X 6mm Push in Fitting for Nylon Tube | 1 |
| 29 | MAF-027 | Mastiff 200 Vacuum Pickup Panel Set (3 Parts) | 2 |
| 30 | MAF-027 | Mastiff 200 Vacuum Pickup Panel Set (3 Parts) | 1 |
| 31 | FS-268 | M10 X 25 Socket Head Countersunk Screw | 2 |
| 32 | FS-447 | Screw Socket 3/8" NF x 1" Zinc | 8 |
| 33 | FS-231 | M6 X 16 Socket Head Cap Screw | 4 |
| 34 | FS-316 | M8 Spring Washer | 22 |
| 35 | FS-279 | M8 X 20 Hex Head Set Screw | 18 |
| 36 | FS-331 | M8 Standard Washer | 4 |
| 37 | FS-344 | M8 Standard Nut | 4 |

Mastiff 200

Parts Listing - Inner Chassis - 1 Phase



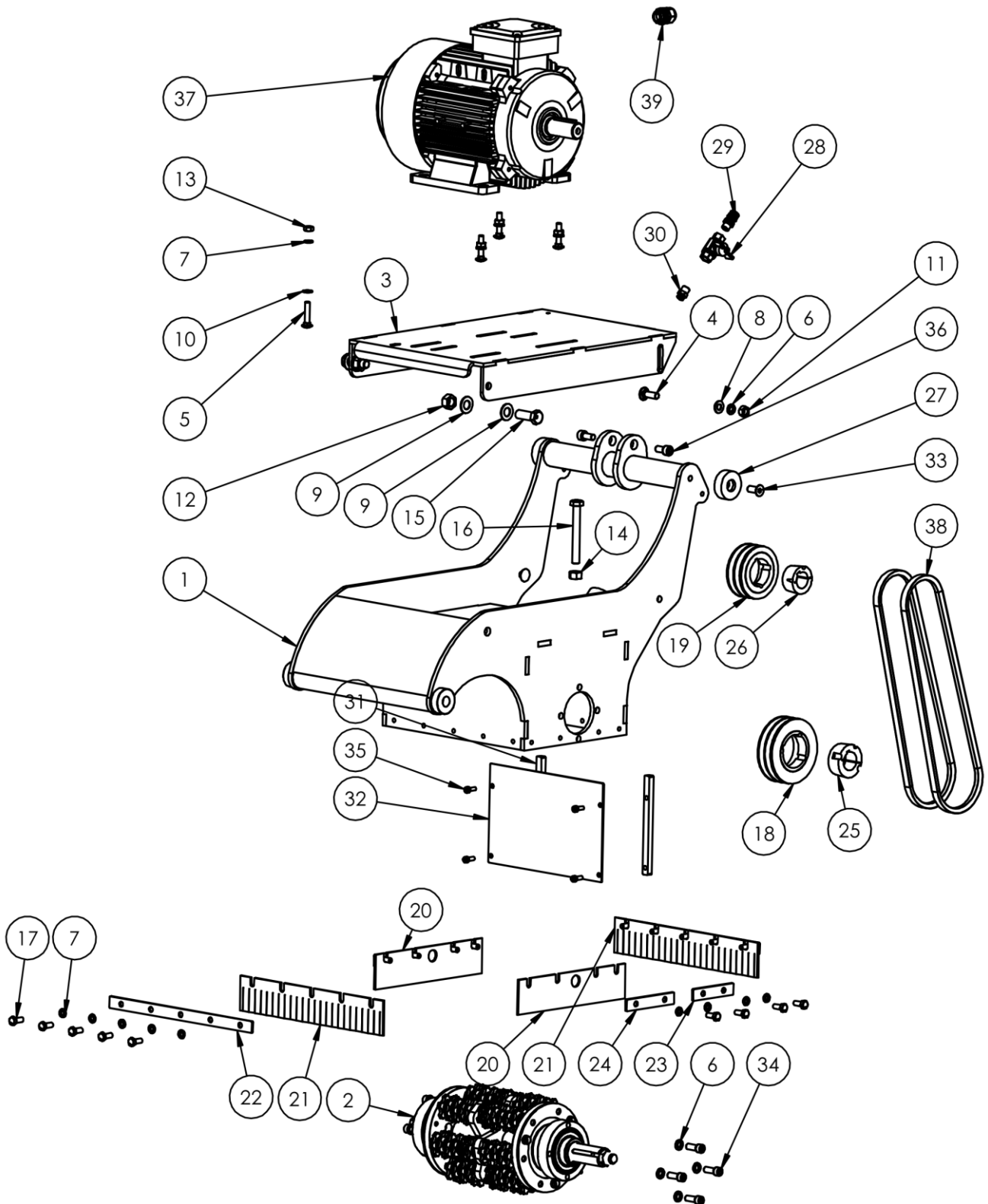
Mastiff 200

Parts Listing - Inner Chassis - 1 Phase List

| ITEM NO. | PartNo | DESCRIPTION | |
|----------|---------|--|----|
| 1 | MAF-005 | Mastiff 200 Inner Chassis | 1 |
| 2 | | See Parts Listing | 1 |
| 3 | MAF-025 | Mastiff 200 Motor Mount | 1 |
| 4 | FS-455 | Cup Head Bolt M10 X 30 | 2 |
| 5 | FS-453 | Cup Head Bolt M8 X 40 | 4 |
| 6 | FS-317 | M10 Spring Washer | 10 |
| 7 | FS-316 | M8 Spring Washer | 22 |
| 8 | FS-332 | M10 Standard Washer | 2 |
| 9 | FS-334 | M14 Standard Washer | 4 |
| 10 | FS-331 | M8 Standard Washer | 4 |
| 11 | FS-345 | M10 Standard Nut | 2 |
| 12 | FS-347 | M14 Standard Nut | 2 |
| 13 | FS-344 | M8 Standard Nut | 4 |
| 14 | FS-346 | M12 Standard Nut | 1 |
| 15 | FS-308 | M14 X 40 Hex Head Set Screw | 2 |
| 16 | FS-301 | M10 X 100 Hex Head Set Screw | 1 |
| 17 | FS-279 | M8 X 20 Hex Head Set Screw | 18 |
| 18 | MAF-113 | Pulley 1610 106mm x 1A | 1 |
| 19 | MAF-117 | Pulley 1210 80mm x 1A | 1 |
| 20 | G3-507 | AX 29 Belt | 1 |
| 21 | MAF-030 | Mastiff 200 Skirt Side | 2 |
| 22 | MAF-032 | Mastiff 200 Skirt Front And Back | 2 |
| 23 | MET-032 | Motor Ravel 4 Pole 2.2 Kw Complete | 1 |
| 24 | MAF-035 | Mastiff 200 Skirt Front And Back Retainer | 2 |
| 25 | MAF-039 | Mastiff 200 Skirt Side Retainer 80mm Long | 2 |
| 26 | MAF-037 | Mastiff 200 Skirt Side Retainer 100mm Long | 2 |
| 27 | MAF-110 | Taper Lock Bush 1610 x 1-1/4" Bore | 1 |
| 28 | MAF-118 | Taper Lock Bush 1210 x 28mm Bore | 1 |
| 29 | MAF-063 | Mastiff 200 - Chassis Guide Spacer | 2 |
| 30 | G3-153 | Ball Valve 1/4 Butterfly | 1 |
| 31 | MET-063 | Brass Tap adapter | 1 |
| 32 | G3-154 | 1/4" male X 6mm Push in Fitting for Nylon Tube | 1 |
| 33 | MAF-027 | Mastiff 200 Vacuum Pickup Panel Set (3 Parts) | 2 |
| 34 | MAF-027 | Mastiff 200 Vacuum Pickup Panel Set (3 Parts) | 1 |
| 35 | FS-268 | M10 X 25 Socket Head Countersunk Screw | 2 |
| 36 | FS-447 | Screw Socket 3/8" NF x 1" Zinc | 8 |
| 37 | FS-231 | M6 X 16 Socket Head Cap Screw | 4 |

Mastiff 200

Parts Listing - Inner Chassis - 3 Phase



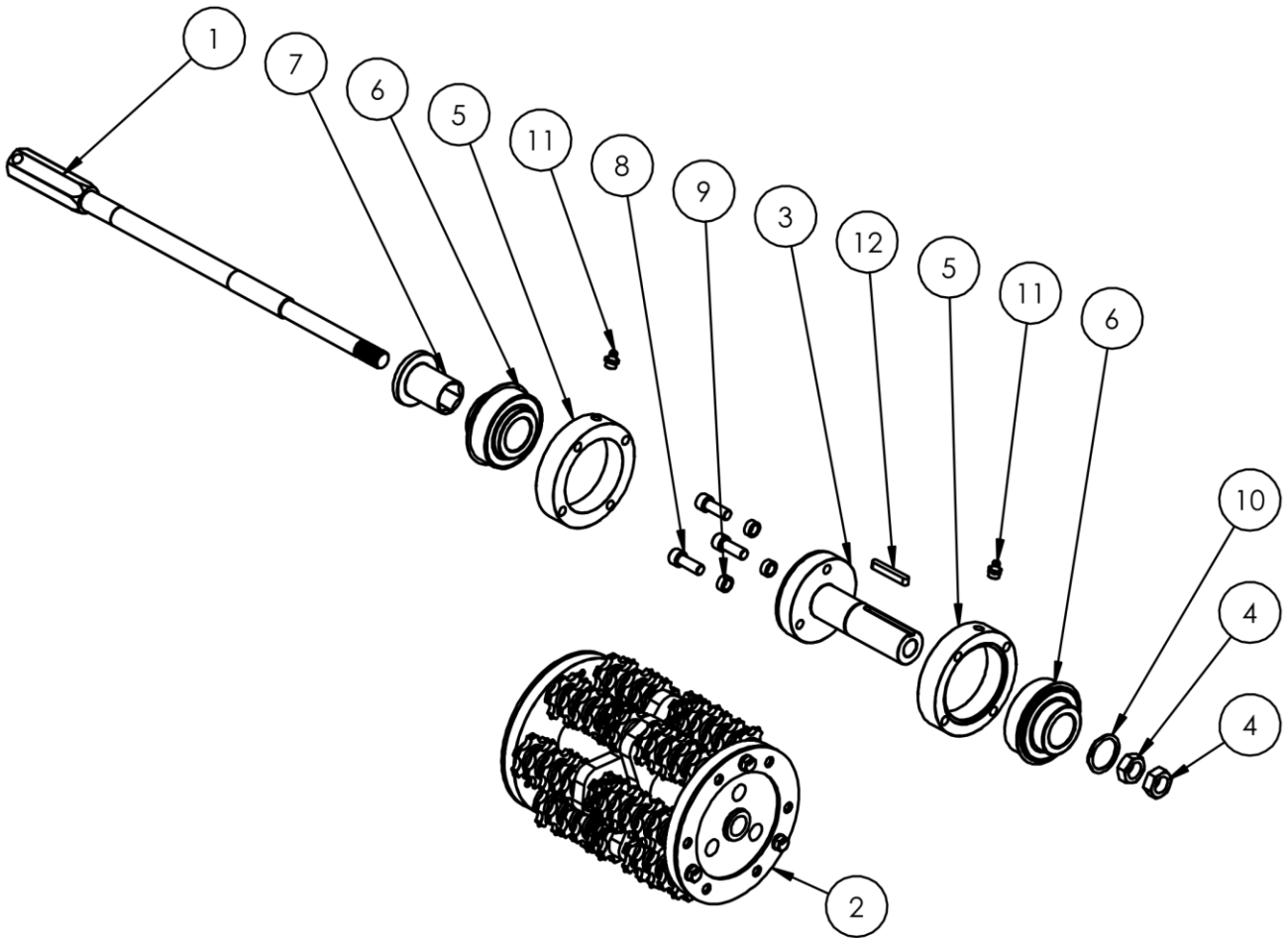
Mastiff 200

Parts Listing - Inner Chassis - 3 Phase List

| ITEM NO. | PartNo | DESCRIPTION | QTY. |
|----------|---------|---|------|
| 1 | MAF-005 | Mastiff 200 Inner Chassis | 1 |
| 2 | | See Parts Listing | 1 |
| 3 | MAF-025 | Mastiff 200 Motor Mount | 1 |
| 4 | FS-455 | Cup Head Bolt M10 X 30 | 2 |
| 5 | FS-453 | Cup Head Bolt M8 X 40 | 4 |
| 6 | FS-317 | M10 Spring Washer | 10 |
| 7 | FS-316 | M8 Spring Washer | 22 |
| 8 | FS-332 | M10 Standard Washer | 2 |
| 9 | FS-334 | M14 Standard Washer | 4 |
| 10 | FS-331 | M8 Standard Washer | 4 |
| 11 | FS-345 | M10 Standard Nut | 2 |
| 12 | FS-347 | M14 Standard Nut | 2 |
| 13 | FS-344 | M8 Standard Nut | 4 |
| 14 | FS-346 | M12 Standard Nut | 1 |
| 15 | FS-308 | M14 X 40 Hex Head Set Screw | 2 |
| 16 | FS-301 | M10 X 100 Hex Head Set Screw | 1 |
| 17 | FS-279 | M8 X 20 Hex Head Set Screw | 18 |
| 18 | MAF-111 | Pulley 1610 106mm x 2A | 1 |
| 19 | MAF-119 | Pulley 1210 85mm x 2A (For HD model) | 1 |
| 20 | MAF-030 | Mastiff 200 Skirt Side | 2 |
| 21 | MAF-032 | Mastiff 200 Skirt Front And Back | 2 |
| 22 | MAF-035 | Mastiff 200 Skirt Front And Back Retainer | 2 |
| 23 | MAF-039 | Mastiff 200 Skirt Side Retainer 80mm Long | 2 |
| 24 | MAF-037 | Mastiff 200 Skirt Side Retainer 100mm Long | 2 |
| 25 | MAF-110 | Taper Lock Bush 1610 x 1-1/4" Bore | 1 |
| 26 | MAF-118 | Taper Lock Bush 1210 x 28mm Bore | 1 |
| 27 | MAF-063 | Mastiff 200 - Chassis Guide Spacer | 2 |
| 28 | G3-153 | Ball Valve 1/4 Butterfly | 1 |
| 29 | MET-063 | Brass Tap adapter | 1 |
| 30 | G3-154 | 1/4" male X 6mm Push in Fitting for Nylon Tube | 1 |
| 31 | MAF-027 | Mastiff 200 Vacuum Pickup Panel Set (3 Parts) | 2 |
| 32 | MAF-027 | Mastiff 200 Vacuum Pickup Panel Set (3 Parts) | 1 |
| 33 | FS-268 | M10 X 25 Socket Head Countersunk Screw | 2 |
| 34 | FS-447 | Screw Socket 3/8" NF x 1" Zinc | 8 |
| 35 | FS-231 | M6 X 16 Socket Head Cap Screw | 4 |
| 36 | FS-245 | M10 X 20 Socket Head Cap Screw | 2 |
| 37 | G3-479 | Motor 5.5 KW 2 Pole Foot Only 3 phase Aluminum (HD) | 1 |
| 38 | G3-506 | AX37 (For HD Model) | 2 |
| 39 | G3-036 | Cable Gland M20 | 1 |

Mastiff 200

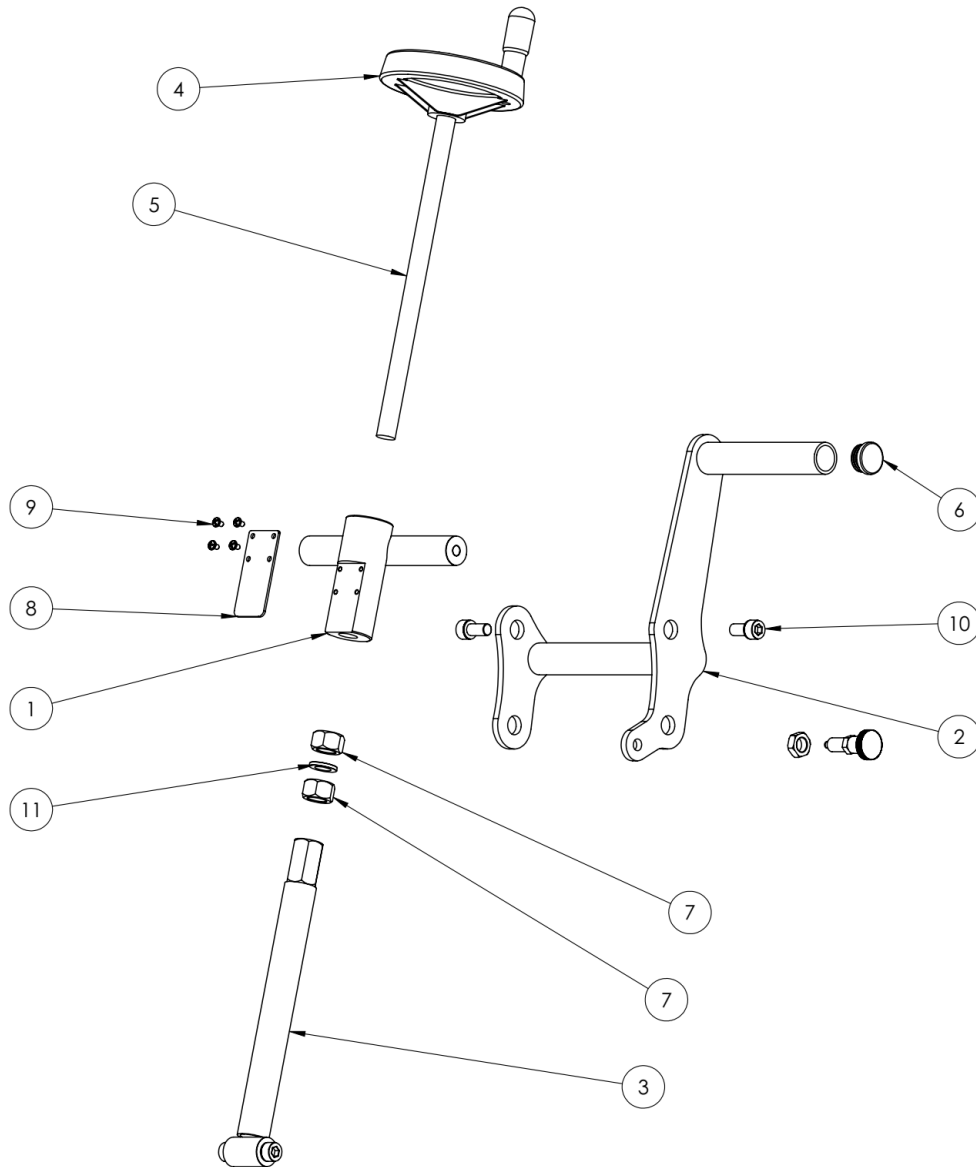
Parts Listing - Bearings & Shaft



| ITEM NO. | PartNo | DESCRIPTION | QTY. |
|----------|---------|--------------------------------|------|
| 1 | MAF-108 | Mastiff 200 Drum Shaft | 1 |
| 2 | | See Parts Listing | 1 |
| 3 | MAF-106 | Mastiff 200 Drum Driver | 1 |
| 4 | MAF-109 | Meastiff Left Hand Nut | 2 |
| 5 | MAF-104 | Mastiff 200 Bearing Housing | 2 |
| 6 | MAF-112 | Mastiff Bearing 1-1/4 Bore | 2 |
| 7 | MAF-103 | Bearing Hex Centre | 1 |
| 8 | FS-447 | Screw Socket 3/8" NF x 1" Zinc | 3 |
| 9 | FS-448 | NUT 3/8" NF Zinc (Remove Hex) | 3 |
| 10 | G3-826 | Circlip External 1-1/4 | 1 |
| 11 | G3-551 | Grease Nipple 1/8 NPS | 2 |
| 12 | MAF-121 | 1/4 x 1 3/4 Key | 1 |

Mastiff 200

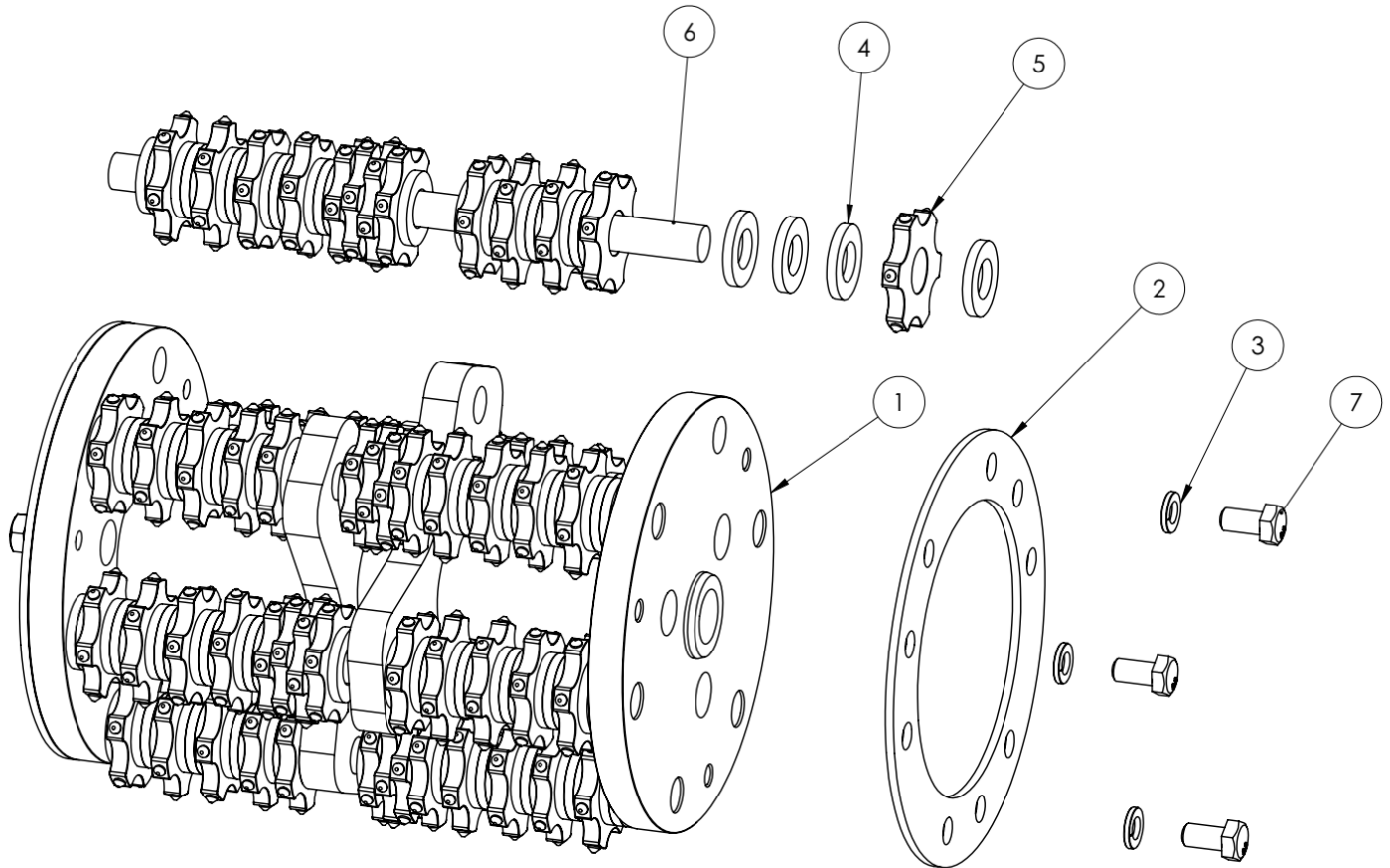
Parts Listing - Lifting Mechanism



| ITEM NO. | PartNo | Description | QTY. |
|----------|---------|--|------|
| 1 | MAF-049 | Mastiff 200 - Depth Control Upper Section | 1 |
| 2 | MAF-060 | Mastiff 200 - Depth Control Lever | 1 |
| 3 | MAF-055 | Mastiff 200 - Depth Control Lower Section | 1 |
| 4 | MAF-048 | Mastiff 200 - Depth Control Two Spoke Hand Wheel | 1 |
| 5 | N/A | Lift Lever Thread (included with above) | 1 |
| 6 | RP-076 | Tube Cap 27OD | 1 |
| 7 | FS-368 | M16 Standard Nut | 2 |
| 8 | MAF-124 | Mastif 200 - Lift Lever Spring Steel Flap | 1 |
| 9 | FS-549 | M4 X 6 Screw Pan Head Phillips | 4 |
| 10 | FS-245 | M10 X 20 Socket Head Cap Screw | 4 |
| 11 | FS-319 | M14 Spring Washer | 1 |
| 12 | G4-026 | Index plunger for G4 swing weight | 1 |
| 13 | FS-3XX | M12 x 1.5 Half Nut | 1 |

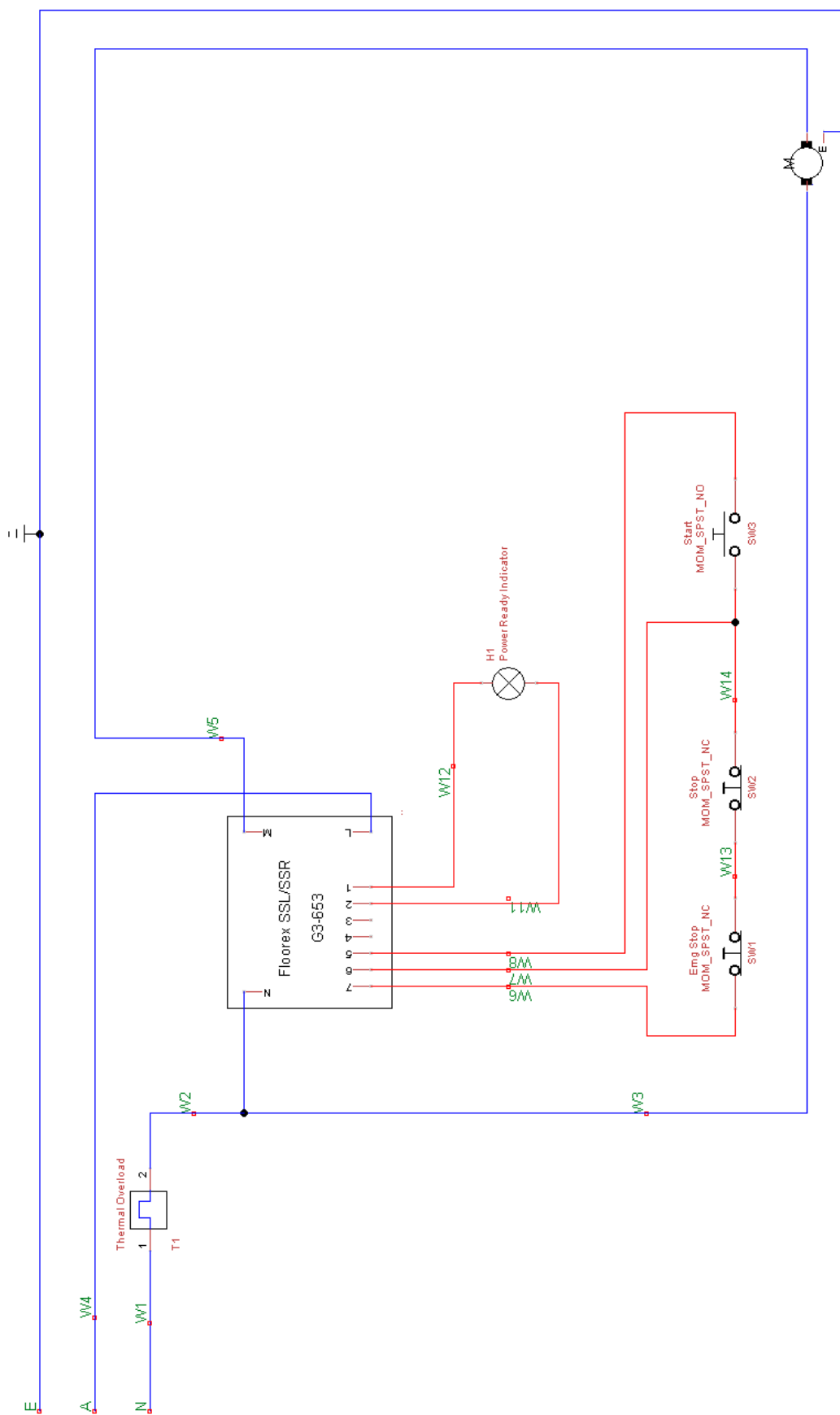
Mastiff 200

Parts Listing - Drum and Cutters



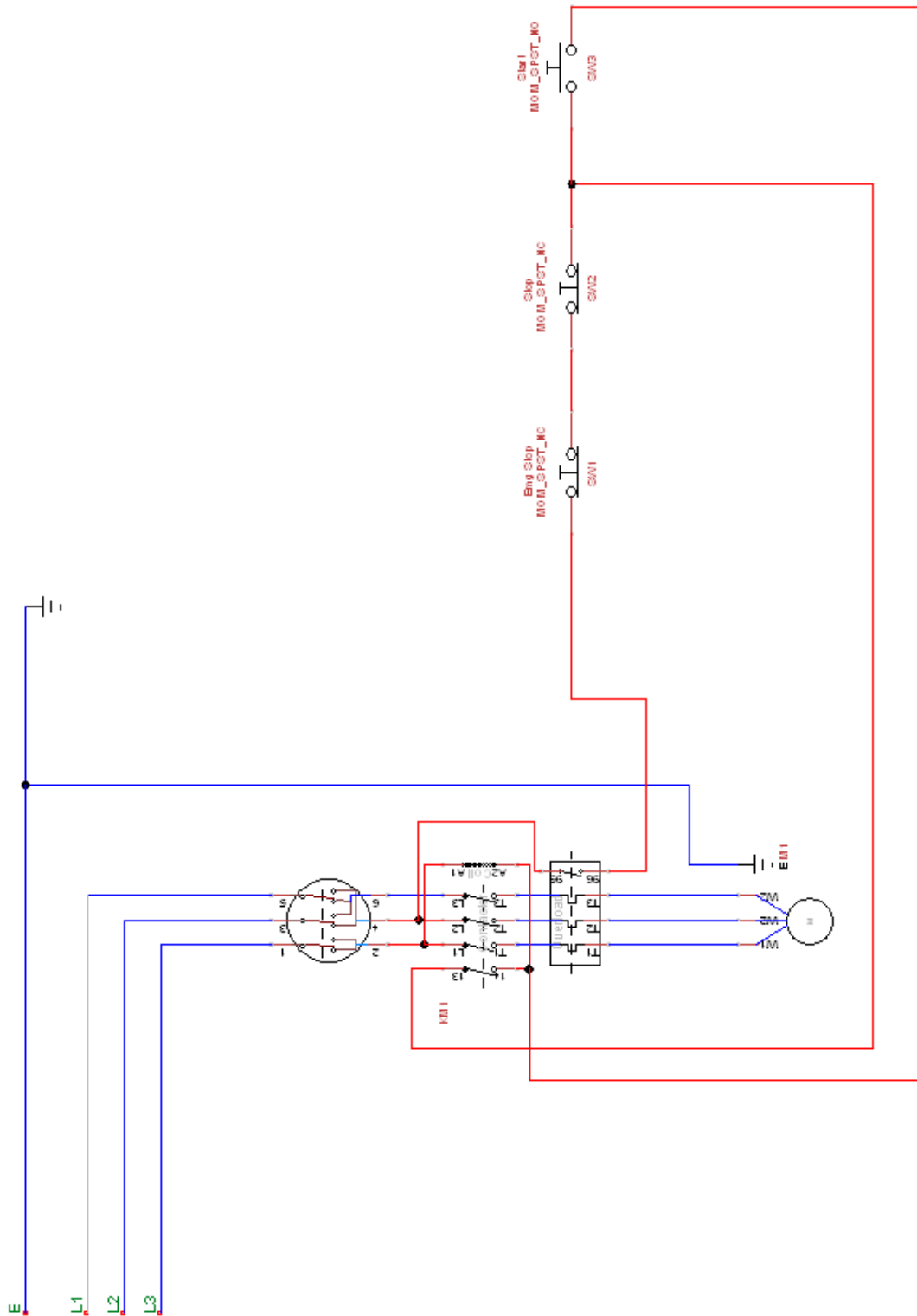
| ITEM NO. | PartNo | DESCRIPTION | QTY. |
|----------|----------|-----------------------------|------|
| 1 | MAF-160 | Mastiff 200 Drum Bare | 1 |
| 2 | MAF-105 | Mastiff Drum Shaft Retainer | 2 |
| 3 | FS-316 | M8 Spring Washer | 6 |
| 4 | ED-12230 | Hardened Spacer 1/2 inch | 171 |
| 5 | ED-20156 | 6 Point Cutter | 78 |
| 6 | ED-20150 | Cutter Shaft | 6 |
| 7 | FS-278 | M8 X 16 Hex Head Set Screw | 6 |

Mastiff 200 Wiring Diagram 1 Phase



Mastiff 200

Wiring Diagram 3 Phase



Mastiff 200

Maintenance Schedule

| All Maintenance to be performed by qualified personnel. | Before Operation | Every 4 hours | Every 8 Hours | Daily or before Every Hire | Every 40-50 Hours of operation |
|---|------------------|---------------|---------------|----------------------------|--------------------------------|
| Belt Tension | | | | | X |
| Check Engine Oil level | X | | | | |
| Air Filter Element | | | | X | |
| Change Engine Oil (Refer to Engine Manual) | | | | | X |
| Check main bearing units for play | | | | | X |
| Grease Bearings 2 Pumps | | X | | | |
| Check Tooling condition | | X | | | |
| Check Bearings | | | X | | |
| Check Hex, Main shaft & Drive for wear | | | | | X |

Mastiff 200

Mastiff 200

Mastiff 200



Floorex Products

Your complete supplier
of all your concrete
surface preparation
needs

- Diamond grinders
- Concrete Polishers
- Dust extraction
- Shotblasters
- Screed mixers
- Diamond Tooling
- Floor Scrapers
- Coating application

FLOOREX
PRODUCTS
11 Jennings Road
Swan Hill VIC.
3585

Web: www.floorex.com.au
Email: sales@floorex.com.au