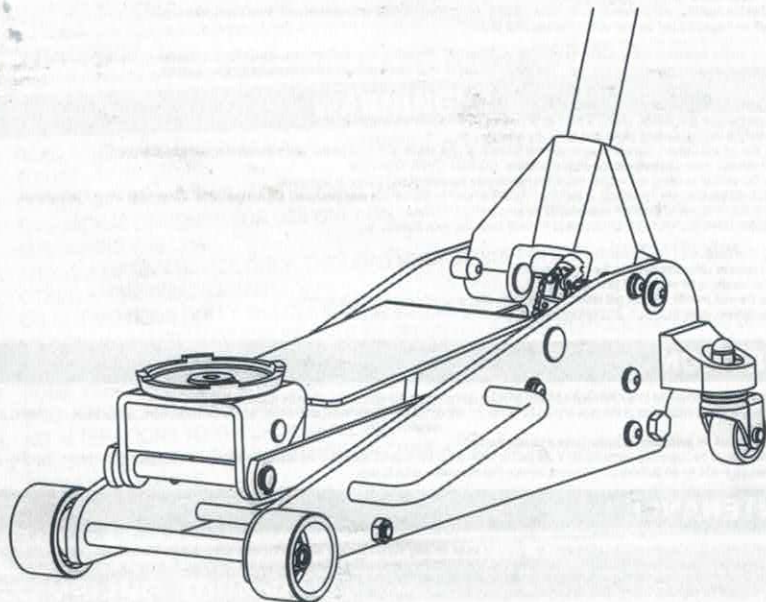


*Operator's Manual*  
**2000KG LIFT CAPACITY**

*Aluminium / Steel Floor Jack*

Model : T825011L



**WARNING :** Before using this appliance, read this Operator's Manual and follow all its Safety Rules and Operating Instructions.

- Safety
- Operation
- Maintenance
- Español

## SPECIFICATIONS



Rated Capacity

**2000KGS MAX**

Min. Height

**100 MM**

Max. Height

**460 MM**

## OPERATIONS

The owner and/or operator is responsible for providing maintenance, maintaining all decals or warning labels and while in use, maintaining the unit in good work order. If the owner and/or operator is not fluent in English or Spanish, the product warnings and instructions shall be read and discussed with the operator in the operator's native language by the purchaser/owner or his designee. Make sure that the operator comprehends its contents. Safety information shall be emphasized and understood prior to use. The jack shall be inspected per the instruction manual prior to use.

It is the owner and/or operators responsibility to study all WARNINGS, operating, and maintenance instructions contained on the product label and instruction manual prior to operation of this unit. The owner/operators shall retain product instructions for future reference.

### Raising Vehicle:

1. Make sure the jack and vehicle are on a hard level surface.
2. Always set the vehicle parking brake and block the wheels.
3. Consult the vehicle owners manual to ascertain the location of jack points and position the jack beneath the prescribed lift point.
4. Turn the release valve clockwise to the closed position. **DO NOT OVER TIGHTEN!**
5. To raise the vehicle to designed height, place the handle into the socket and pump up and down.
6. Place jack stands beneath the vehicle at locations recommended by the vehicle manufacturer. Do not get under the vehicle without jack stands. Jacks are not designed to maintain heavy loads for long periods of time.
7. Turn release valve **SLOWLY** counterclockwise to lower load onto jack stands.

### Lowering Vehicle:

1. Turn the release valve clockwise to the closed position.
2. Pump the handle to lift vehicle off jack stands.
3. Remove the jack stands. Do not get under or let anyone else under the vehicle while lowering.
4. Turn the release valve **SLOWLY** counterclockwise to lower the vehicle onto the ground.

## INSPECTION

The product shall be maintained in accordance with the product instructions. No alterations shall be made to this product.

1. Before use, a visual inspection of the jack should be made for abnormal conditions such as cracked welds, damage, bent, worn, loose or missing parts, or hydraulic leaks.
2. Inspections shall be performed in accordance with this manual.
3. The product shall be inspected immediately if the jack is believed to have been subject to an abnormal load or shock. It is recommended that this inspection be made by an authorized customer service representative prior to use.

## MAINTENANCE

Monthly maintenance is recommended. Lubrication is critical to jacks as they support heavy loads. Any restriction due to dirt, rust, etc., can cause either slow movement or cause extremely rapid jerks, damaging the internal components. The following steps are designed to keep the jack well lubricated:

1. Lubricate the ram, linkages, saddle and pump mechanism with light oil. Grease wheel bearings and axles.
2. Visually inspect for cracked welds, bent, loose, missing parts or hydraulic oil leaks.
3. If jack is subjected to abnormal load or shock, remove from service and have it examined by a customer service representative prior to use.
4. Clean all surfaces and maintain all labels and warnings.
5. Check and maintain the ram oil level.
6. Check ram every 3 months for any sign of rust or corrosion. Clean as needed and wipe with an oil cloth. When not in use, always leave the saddle and ram all the way down.

**Always store your jack in the fully lowered position. This will help protect critical areas from excessive corrosion.**

Do not use brake or transmission fluids or regular motor oil as they can damage the seals. Always purchase and use products labeled Hydraulic Jack Oil

## CHECK OIL LEVEL

1. Turn release valve counterclockwise to allow ram to fully retract. It may be necessary to apply force to the saddle for lowering.
2. With the jack in the level position, remove the oil fill plug. The oil should be level with the bottom of fill hole. If not, top off. Do not overfill. Always fill with new, clean hydraulic jack oil.
3. Replace fill plug.
4. Check jack operation.
5. Purge air from system as required.

## TROUBLE SHOOTING

### SYSTEM AIR PURGE:

1. Turn release valve counterclockwise one full turn to open.
2. Pump handle eight full strokes.
3. Turn release valve clockwise to close valve.

## TROUBLE SHOOTING

PROBLEM	POSSIBLE CAUSE	ACTION
Jack will not lift to full height	Low oil level	Check oil level
Jack will not hold load	Release valve not closing Hydraulic jack oil contaminated Pump valves not sealing Cylinder ram binding	Call customer service
Lift arm will not lower	Cylinder ram binding Parts worn Internal damage Broken return spring or unhooked Lift arm linkage bent or binding	Call customer service
Jack feels spongy when lifting	See Air Purge section	See Air Purge procedure

## FACTORY SERVICE

Any hydraulic jack found to be damaged in any way, is found to be worn or operates abnormally, believed to have subjected to an abnormal load, "SHALL BE REMOVED FROM SERVICE UNTIL REPAIRED". Owners and/or operators should be aware that repair of the equipment requires specialized knowledge and facilities. Only factory authorized parts, labels and decals shall be used on this equipment.  
Call customer service department  
Annual inspection of the jack is recommended and should be made by the manufacturer's or supplier's authorized repair facility to ensure that your jack is in optimum conditions and that the jack has correct decals and safety labels specified by the manufacturer.

## WARNING!

1. READ, STUDY AND UNDERSTAND ALL WARNINGS AND OPERATING INSTRUCTIONS PRIOR TO USE.
2. DO NOT OVERLOAD THIS JACK BEYOND THE RATED CAPACITY.
3. THIS JACK IS DESIGNED FOR USE ONLY ON HARD LEVEL SURFACES CAPABLE OF SUSTAINING THE LOAD.
4. THIS IS A LIFTING DEVICE ONLY. THE LOAD MUST BE SUPPORTED IMMEDIATELY BY OTHER APPROPRIATE MEANS.
5. DO NOT MOVE OR DOLLY THE VEHICLE WHILE ON THE JACK.
6. LIFT ONLY ON AREAS OF THE VEHICLE AS SPECIFIED BY THE VEHICLE MANUFACTURER.
7. CENTER LOAD ON SADDLE PRIOR TO LIFTING.
8. SOME VEHICLES REQUIRE AN ADAPTER TO PROPERLY ENGAGE THE FRAME FOR LIFTING. USE VEHICLE MANUFACTURERS INSTRUCTIONS ON PROPER LIFTING.
9. NO ALTERATIONS TO THE JACK SHALL BE MADE.
10. FAILURE TO HEED THESE WARNINGS MAY RESULT IN PERSONAL INJURY AND/OR PROPERTY DAMAGE.

Because of the potential hazards associated with the misuse of equipment of this type, no alterations shall be made to the product without written authorization of the manufacturer or supplier.

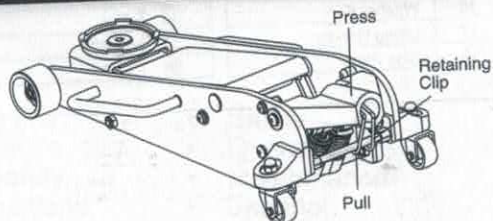
## ASSEMBLING YOUR JACK

Please check that you have all of the parts listed below.

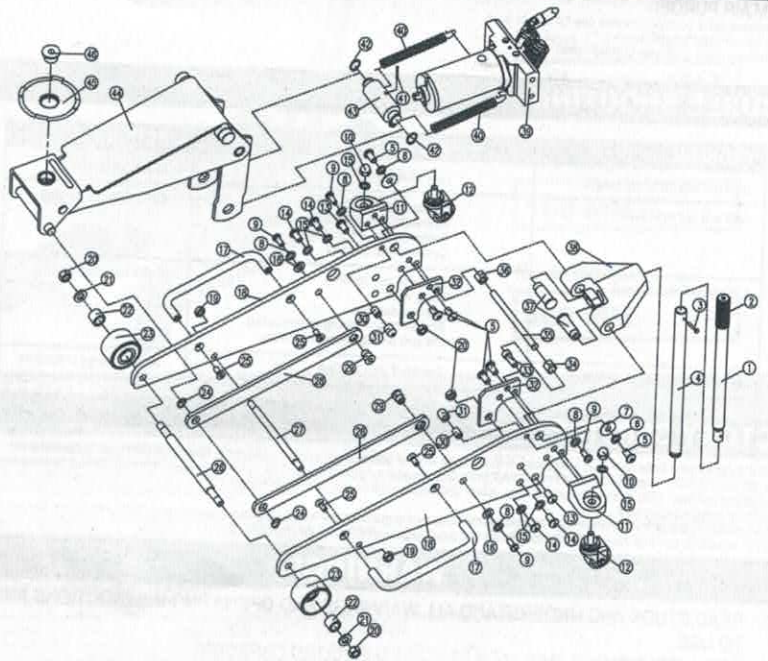
### Components:

- 1ea. Aluminum jack chassis
- 1ea. Pumping handle in two parts

First, remove the retaining clip:  
Press the yoke down and then pull the retaining clip out from the hole in the base (as pictured).



## PARTS LIST



No.	Description
1	Upper Handle
2	Handle Sleeve
3	Bolt M6x35
4	Lower Handle
5	Screw M10x25
6	Washer 10
7	Washer 10
8	Washer 8
9	Screw M8x20
10	Nut M12
11	Rear caster Holder
12	Rear caster Assembly
13	Bolt
14	Screw M12x25
15	Washer 12
16	Washer 8
17	Lifting Handle
18	Side Plate

No.	Description
19	Nut M10
20	Nut M12
21	Washer 12
22	Bushing
23	Front wheel
24	Washer 16
25	Screw M8x20
26	Shaft for front wheel
27	Shaft for connecting rod
28	Connecting rod
29	Pin for connecting rod
30	Locking blocker
31	Rubber sleeve
32	Block plate
33	Screw
34	Nut
35	Shaft
36	Nut

No.	Description
37	Shaft for handle socket
38	Handle socket
39	Power unit assembly
40	Return spring
41	Pin 4x40
42	Washer 20
43	Link block
44	Lifting arm
45	Saddle
46	Shaft for saddle