

**Eoslift**

Eoslift Automation Technology Corp.  
No.99 Yanjia Road, Yuanfeng Town, Haiyan, Zhejiang Province, China 314317  
Tel: +86 573 8622 9999  
Fax: +86 573 8622 2900  
info@eoslift.com  
www.eoslift.com  
Hotline: 400-626-9090



**Eoslift**



# M25/30

Manual  
Pallet  
Truck

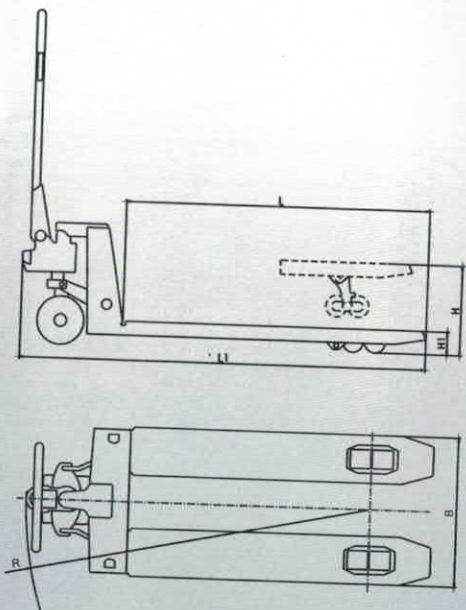
**Operating Instructions**

**Table of contents**

|   |    |
|---|----|
| I . Technical parameters                      | 01 |
| II . Safety rules                             | 02 |
| III . Installation of handles                 | 03 |
| IV . Adjusting the finger grip handle         | 04 |
| V . Maintenance                               | 05 |
| VI . Transport, loading, test run and storage | 06 |
| VII . Troubleshooting                         | 07 |
| VIII . Parts list                             | 09 |

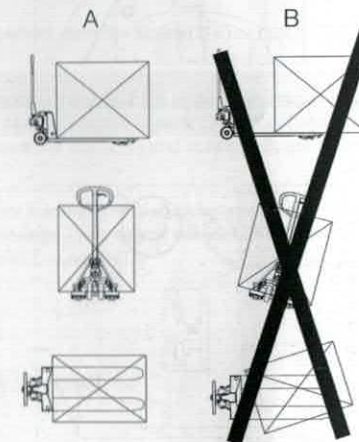
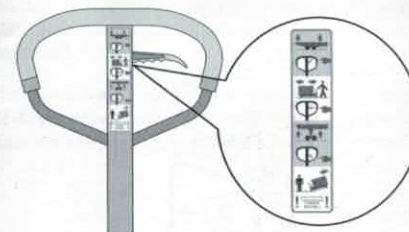


| Model                     |                                | M25/M30         |         |
|---------------------------|--------------------------------|-----------------|---------|
| Rated capacity            | kg                             | 2500/3000       |         |
| Load center               | mm                             | 600             |         |
| Dead-weight               | kg                             | 72-79           |         |
| Wheel material            |                                | PU/NYLON        |         |
| Maximum fork height       | <input type="checkbox"/> H mm  | 200             | 190     |
| Minimum fork height       | <input type="checkbox"/> H1 mm | 85              | 75      |
| Steering wheel            | mm                             | Φ200x50/Φ180x50 | Φ200x50 |
| Load-bearing wheel        | mm                             | Φ80x70          | Φ74x70  |
| Single Load-bearing wheel | <input type="checkbox"/> B mm  | Φ74x93          |         |
| Overall fork width        | <input type="checkbox"/> L mm  | 540/685         |         |
| Fork length               | <input type="checkbox"/> L1 mm | 1150/1220       |         |
| Length of the truck       | <input type="checkbox"/> R mm  | 1580/1650       |         |
| Minimum turning radius    | mm                             | 1325/1395       |         |

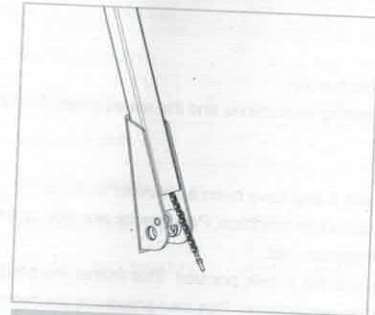


Safety rules

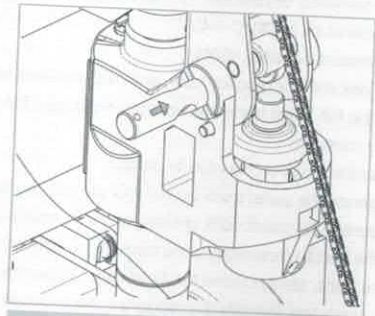
- ▶ The truck is only applicable to indoor use and the application environment must meet the following conditions:  
Free from rainwater or corrosion of harmful gases;  
Room temperature of -20°C~+40°C;  
Relative ambient humidity <90%;  
and Requirements for ground: hard, anti-skid and level without barriers.
- ▶ Before using the pallet truck, the operator must read the operating instructions and the warning labels on the truck body carefully.
- ▶ Do not use this truck on the muddy ground.
- ▶ Do not operate the pallet truck unless you are fully familiar with it and have been authorized to do so.
- ▶ Do not operate the pallet truck unless you have carefully checked its condition. Pay special attention to the wheels, the handle assemblies, the truck frame, the unloading plate, etc.
- ▶ To pull the truck, always move the finger grip control handle into the middle position. This makes the handle easier to move and reduces the rebound of the handle by the small piston. This also preserves the hydraulic seals and the piston components. A long service life can be expected.
- ▶ Do not carry or lift passengers.
- ▶ The operator shall wear safety shoes and gloves for protection.
- ▶ While the goods are being transported, all people should stay 600mm away from the truck frame.
- ▶ Do not lift goods in the way as shown in Figure B. Goods should be stacked stably.
- ▶ Overload is prohibited.
- ▶ Do not use the truck in a potentially flammable and explosive atmosphere.
- ▶ Do not use the truck as a vehicle jack.
- ▶ Do not use the truck during strong wind forces.
- ▶ Do not use the truck on places insufficiently illuminated.



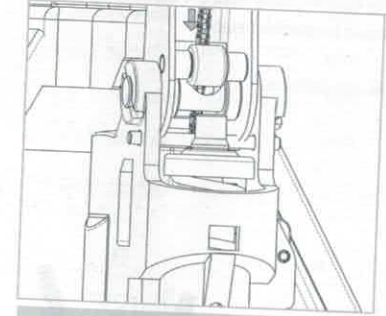
## Adjusting the finger grip handle



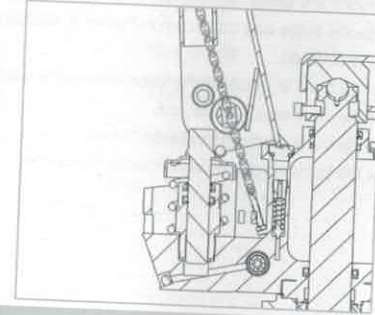
1. Make sure the chain on the handle is in this position shown in the picture.



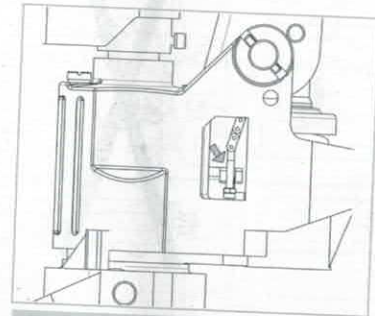
2. Push the handle shaft through the holes, Fix it with the spring pin.



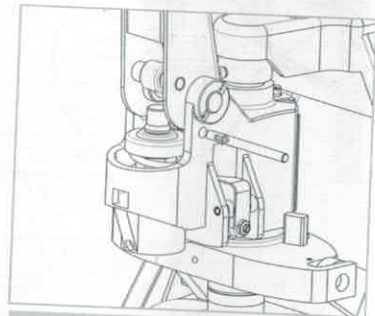
3. Put the chain through the hole on the shaft.



5. Pull the shaft from the hole. Then the assembly is complete.

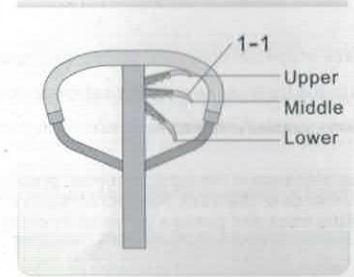


4. Fix the chain in the slot of the unloading plate.



5. Pull the shaft from the hole. Then the assembly is complete.

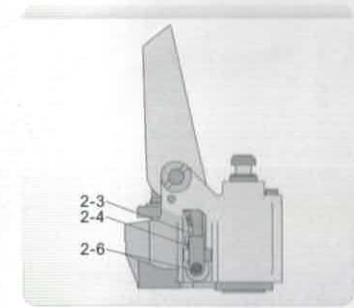
On the handle of this pallet truck, you can find finger grip control handle(1-1) which can be regulated in three positions :



- ① Lifting-set the control handle at lower position
- ② Middle position: set the control handle at middle position
- ③ Lowering: set the control handle at upper position. The handle moves back to the middle position when released.

However if the truck cannot operate normally under three positions, you can adjust them according to the following steps:

- ① If the forks elevate while pumping in the Middle position, turn the adjusting nut (2-4) on the adjusting bolt (2-3) or screw (2-6) clockwise until pumping action does not raise the forks and the finger grip control handle works properly Middle position .
- ② If the forks descend while pumping in the Middle position, turn the screw(2-6) or nut(2-6) counter clockwise until the forks stop descending.
- ③ If the forks do not descend when the finger grip control handle (1-1) is in the Lowering position, turn the nut (2-4) or screw (2-6) clockwise until raising the control handle lowers the forks. Then check the Middle position according to items ① and ② to make sure the nut (2-4) and screw(2-6) are in the proper position.
- ④ If the forks do not elevate when the finger grip control handle is in the Lifting position, turn the nut (2-4) or screw (2-6) counterclockwise until the forks elevate. Then check the function of the Lowering position and Middle position according to items ①, ② and ③ is normal.



- 1 The truck should be parked with the forks lowered to the min. height.
- 2 Check if the signs and warning labels on the truck are in place before using the truck each time.
- 3 Use original parts.
- 4 The waste liquid shall be place in special collection places for disposal.
- 5 Modifications or alterations to the truck, especially the safety device are prohibited.
- 6 Only customer service persons specially trained by our company can carry out maintenance of the truck.
- 7 Thoroughly standardized maintenance is the most important preconditions to ensure stable and reliable operation performance of the truck. Neglect of regular maintenance could result in failure and malfunction of the truck and poses a potential threat to the safety of the staff and operation.

### 1. Hydraulic oil

Please check the oil level every six months and change the oil every twelve months. 2. 32 # hydraulic oil is recommended, with total volume of about 0.5 liters.

### 2. Remove the air

The air may enter into the pump because of transportation or pump in upset position. It will cause the forks fails to be lifted when the finger grip control handle switched to the lifting position. The air can be removed in the following way: pull the finger grip control handle (1-1) to the lowering position and move handle up and down for several times.

### 3. Daily check and maintenance

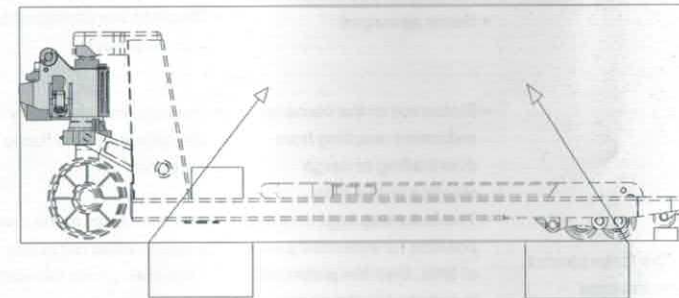
Daily check and maintenance of the pallet truck can limit wear as much as possible. Special attention should be paid to the wheels, the axles, as thread, rags, etc. may block the wheels and axles. The forks should be unloaded and lowered in the lowest position when the job is over.

### 4. Lubrication

All bearings and pivots are provided with long-life lubricants at the factory. You only need fill the lubrication points with long-life lubricants at monthly intervals or after each time the truck is cleaned thoroughly.

If the truck has to be transported for a long distance, it should be packed in the wooden pallet in order to avoid collision during transportation.

- ▶ The handle should be fixed stably in case sliding and damages and transported by fork truck or crane.
- ▶ Before shipment, the operator should first check the truck weight, in order to choose the right crane.
- ▶ When unloading the truck, the operator should be aware of safety of the surroundings to ensure the truck slowly unloaded.
- ▶ If the truck is transported with the forklift truck, the forklift shall lift and lower it slowly to keep the balance of the truck.
- ▶ The truck shall be commissioned according to the following function tests: steering, traveling, braking and combined functions with rated capacity.
- ▶ When a truck is inoperative, the cargoes (if applicable) shall be removed with proper tools, the truck shall be transported out of the working zone with a proper way.
- ▶ When the truck will be shut down and in storage for a long time, the storage environment shall be kept dry and clean, with forks lowered to their lowest position.



This chapter enables the user to identify and rectifies basic faults and the effects of incorrect operation. When trying to locate a fault, proceed in the order shown in the table below. If, after carrying out the following remedial action listed in "actions", the truck cannot be restored to operation, contact the manufacturer's after-sale service department. Additional troubleshooting must only be performed by the manufacturer's specialist service engineers. The manufacturer's customer service department is specially trained to carry out these operations.

| No. | Fault                                     | Possible cause  | Action  |
|-----|---|---|---|
| 1   | The forks cannot be lifted to max. height | The hydraulic oil is insufficient   | Add the hydraulic oil   |
| 2   | The forks cannot be lifted                | <ul style="list-style-type: none"> <li>▶ The hydraulic oil is insufficient</li> <li>▶ The hydraulic oil has impurities</li> <li>▶ Adjusting nut(2-4) or adjusting screw(2-6) in wrong positions</li> <li>▶ Air enters into the cylinder</li> <li>▶ Seals damaged</li> </ul>   | <ul style="list-style-type: none"> <li>▶ Add the hydraulic oil</li> <li>▶ Change hydraulic oil</li> <li>▶ Adjust nut(2-4) or adjusting screw(2-6)</li> <li>▶ Put the finger grip handle in the upper position and press the handle dozens of times</li> <li>▶ Replace the damaged seals with new seals</li> </ul> |
| 3   | The forks cannot be lowered               | <ul style="list-style-type: none"> <li>▶ Piston rod or the frame is deformed resulting from overloading or cargo slanting to one side</li> <li>▶ The forks was kept in raised position for extended period of time, then the piston rod is exposed to the air and gets rusted , which blocks the motion of the piston</li> <li>▶ Adjusting nut(2-4) or adjusting screw(2-6) in wrong positions</li> </ul> | <ul style="list-style-type: none"> <li>▶ Replace the related parts of the cylinder or the frame with new ones</li> <li>▶ Keep the forks at the lowest position while not in use, and keep piston rods lubricated in time</li> <li>▶ Adjust nut(2-4) or adjusting screw(2-6)</li> </ul>                            |
| 4   | Oil leakage                               | <ul style="list-style-type: none"> <li>▶ Seals damaged</li> <li>▶ Parts damaged.</li> </ul>   | <ul style="list-style-type: none"> <li>▶ Replace the damaged seals with new seals</li> <li>▶ Replace the damaged parts with new parts</li> </ul>  |

|   |                                       |   |   |
|---|---------------------------------------|---|---|
| 5 | The forks descended without operation | <ul style="list-style-type: none"> <li>▶ Impurities in the oil cause the valve to be unable to close tightly</li> <li>▶ Seals damaged</li> <li>▶ Adjusting nut(2-4) or adjusting screw(2-6) in wrong positions</li> </ul> | <ul style="list-style-type: none"> <li>▶ Change hydraulic oil</li> <li>▶ Replace the damaged seals with new seals</li> <li>▶ Adjust nut(2-4) or adjusting screw(2-6)</li> </ul> |
|---|---------------------------------------|---|---|

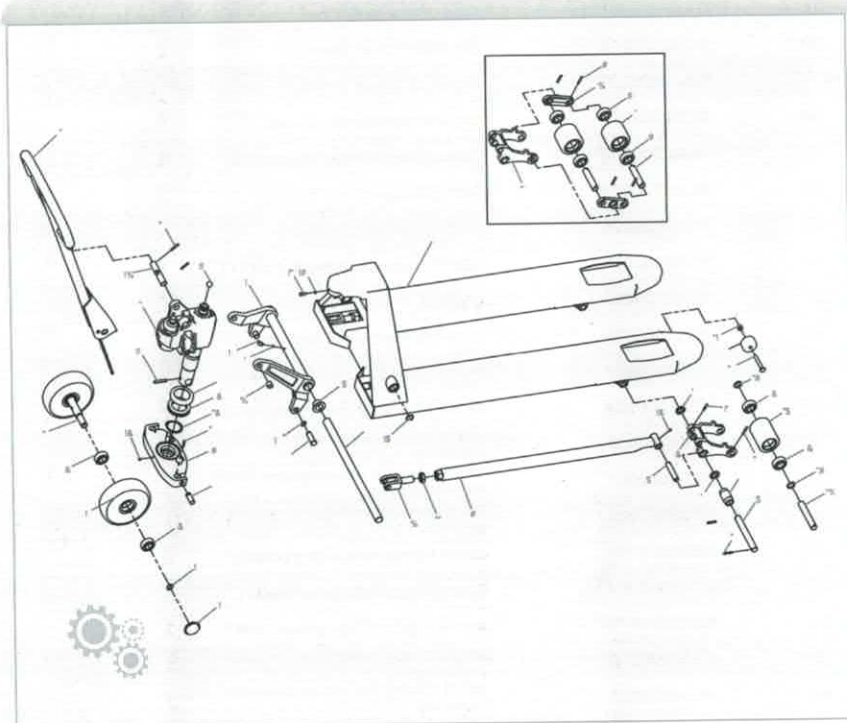


Note: Do not attempt to repair the pallet truck unless you are trained in the professions.

| NO. | Parts number | Description   | Qty. |
|-----|--------------|---|------|
| 1   | WC02000001   | Frame(2.5t,540x1150-85) ,5012                                       | 1    |
|     | WC02000083   | Frame(3.0t,540x1150-85) ,5012                                       |      |
|     | WC02000079   | Frame(2.5t,685x1220-85) ,5012                                       |      |
|     | WC02000086   | Frame(3.0t,685x1220-85) ,5012                                       |      |
|     | WC02000119   | Double-wheel frame<br>(2.5t,685x1220-75),5012                       |      |
|     | WC02000162   | Single-wheel frame<br>(2.5t,685x1220-75),5012                       |      |
|     | WC02000788   | Double-wheel frame<br>(3.0t,685x1220-75),5012                       |      |
|     | WC02000490   | Double-wheel frame<br>(3.0t,685x1220-75),5012                       |      |
| 2   | WC02000013   | Long shaft(540)   | 1    |
|     | WC02000082   | Long shaft(685)   |      |
| 3   | WC02000005   | Connecting rod assembly(2.0t,540),black                             | 1    |
|     | WC02000084   | Connecting rod assembly(3.0t,540),black                             |      |
|     | WC02000081   | Connecting rod assembly(2.0t,685),black                             |      |
|     | WC02000087   | Connecting rod assembly(3.0t,685),black                             |      |
| 4   | WC01000001   | Cylinder assembly (AC-85), galvanized                               | 1    |
|     | WC01000006   | Cylinder assembly (AC-75), galvanized                               |      |
|     | WC01000005   | Cylinder assembly (AC-85), with quick lift,<br>galvanized           |      |
|     | WC01000007   | Cylinder assembly (AC-75), with quick lift,<br>galvanized           |      |
| 5   | WC02000002   | Push rod welded (1150), black                                       | 2    |
|     | WC02000080   | Push rod welded (1220), black                                       |      |
| 6   | WC02000009   | Connecting shaft for small wheel carrier,<br>galvanized             | 2    |
| 7   | WC02000032   | Connecting base, galvanized   | 2    |
| 8   | WC02000006   | Small wheel carrier (85), black                                     | 2    |
|     | WC02000688   | Small wheel carrier (75), black                                     |      |
| 9   | WC02000008   | Plastic washer  | 4    |
| 10* | WC02000011   | Wheel shaft, galvanized   | 4    |
| 11  | WC02000031   | Plastic roller  | 2    |
| 12  | WC02000021   | Guide wheel (into roller 40 x 50 x 10.5)                            | 2    |
| 13  | WC02000029   | Iron-core PU wheel $\phi$ 180x50, bright red PU,<br>black iron core | 2    |
|     | WC02000030   | Aluminium-core rubber wheel $\phi$ 180 x 50 x 140,<br>black         |      |
|     | WC02000078   | Nylon wheel $\phi$ 180x50(flower-shape wheel)                       |      |
|     | WC02000085   | Nylon wheel $\phi$ 180x50,white(plane wheel)                        |      |
|     | WC02000199   | Aluminium-core PU wheel $\phi$ 180x50,<br>bright red PU             |      |
|     | WC02000156   | Aluminium-core rubber wheel $\phi$ 200x50x160,<br>black             |      |

| NO. | Parts number | Description  | Qty. |
|-----|--------------|--|------|
| 13  | WC02000177   | Iron-core PU wheel $\phi$ 200x50,<br>bright red PU, black iron core  | 2    |
|     | WC02000485   | Nylon wheel $\phi$ 200 x 50,<br>white (flower-shape wheel)           |      |
| 14  | WC02000003   | Handle EOS-AC, black   | 1    |
| 15  | WC02000020   | GB308, Steel ball 518  | 1    |
| 16  | WC02000010   | Push rod connecting shaft, galvanized                                | 2    |
| 17* | WC02000007   | Rocker, galvanized   | 4    |
| 18  | WC02000022   | GB276,Deep groove ball bearing 6204,<br>two-side shielded            | 8    |
| 19* | WC02000023   | Iron-core PU wheel $\phi$ 80x70,<br>bright red PU, black iron core   | 4    |
|     | WC02000077   | Nylon wheel $\phi$ 80 x 70, white                                    |      |
|     | WC02000160   | Iron-core PU wheel $\phi$ 74 x 70,<br>bright red PU, black iron core |      |
|     | WC02000120   | Nylon wheel $\phi$ 74 x 70, white                                    |      |
| 20  | WC02000012   | Bolt pin 2, galvanized   | 2    |
| 21  | WC02000014   | Bolt pin, galvanized   | 2    |
| 22  | WC02000015   | Dust cover, galvanized   | 1    |
| 23  | WC02000016   | Big wheel cover, black   | 2    |
|     | WC02000076   | Big wheel cover, white   |      |
| 24  | WC02000017   | Big wheel shaft, galvanized  | 1    |
| 25  | WC02000018   | Connecting bracket, galvanized                                       | 1    |
| 26  | WC02000024   | Sliding bearing 29x25x25   | 2    |
| 27  | WC02000025   | Sliding bearing 18x16x15   | 4    |
| 28  | WC02000028   | GB301, thrust ball bearing 51111                                     | 1    |
| 29  | WC02000027   | GB3452.1,O-ring $\phi$ 5x1.8   | 1    |
| 30  | WC02000026   | JB7940.2, Angle hydraulic grease nipple M6                           | 1    |
| 31  | WE07000002   | GB894.1,Circlip for shaft 16,blackening                              | 2    |
| 32  | WE07000004   | GB894.1,Circlip for shaft 20,blackening                              | 2    |
| 33  | WE06000004   | GB879.1, Spring type straight pin 8x45,<br>blackening                | 1    |
| 34  | WE03000001   | GB70.1, Hexagon socket head cap screw<br>M6 x 16, galvanized         | 1    |
| 35  | WE05000001   | GB93,Normal type spring lock washer 6,<br>galvanized                 | 1    |
| 36  | WE07000001   | GB893.1,Circlip for hole 25,blackening                               | 2    |
| 37  | WC02000004   | Connecting shaft, galvanized   | 1    |
| 38  | WC02000019   | JB7940.4, Push-fit type grease nipple 6                              | 3    |
| 39  | WE06000002   | GB879.1, Spring type straight pin 5x26,<br>blackening                | 2    |
| 40  | WE06000003   | GB879.1, Spring type straight pin 5x28,<br>blackening                | 2    |
| 41  | WE06000001   | GB879.1, Spring type straight pin 5x32,<br>blackening                | 8    |

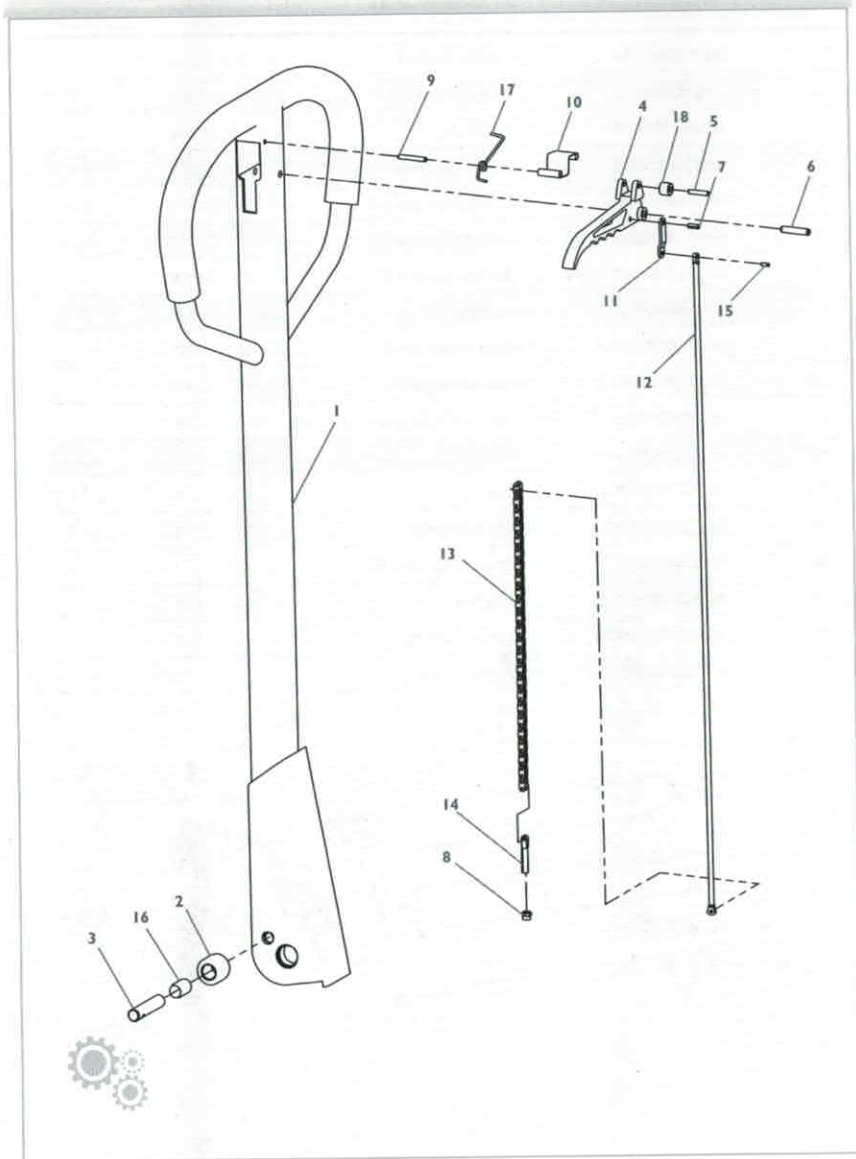
| NO. | Parts number | Description   | Qty. |
|-----|--------------|---|------|
| 42  | WE01000001   | GB5780,Hexagon head bolt M10x65,galvanized                        | 2    |
| 43  | WE04000002   | GB689.1,Hexagon locking nut M10,galvanized                        | 2    |
| 44  | WE04000001   | GB6173,Hexagon thin nut M20x1.5,galvanized                        | 2    |
| 45  | WC02000075   | Washer  | 4    |
| 46  | WC02000074   | Iron-core PU wheel $\phi$ 74 x 93, bright red PU, black iron core | 2    |
|     | WC02000118   | Nylon wheel $\phi$ 74x93  |      |
| 47  | WC02000073   | Single wheel shaft, galvanized                                    | 2    |
| 48  | WE07000003   | GB894.1,Circlip for shaft 52,blackening                           | 1    |
| 49* | WC02000006   | Small wheel carrier (85), black                                   | 2    |
|     | WC02000688   | Small wheel carrier (75), black                                   |      |
| 50* | WE06000001   | GB879.1, Spring type straight pin 5x32, blackening                | 8    |
| 51* | WC02000022   | GB276,Deep groove ball bearing 6204, two-side shielded            | 8    |



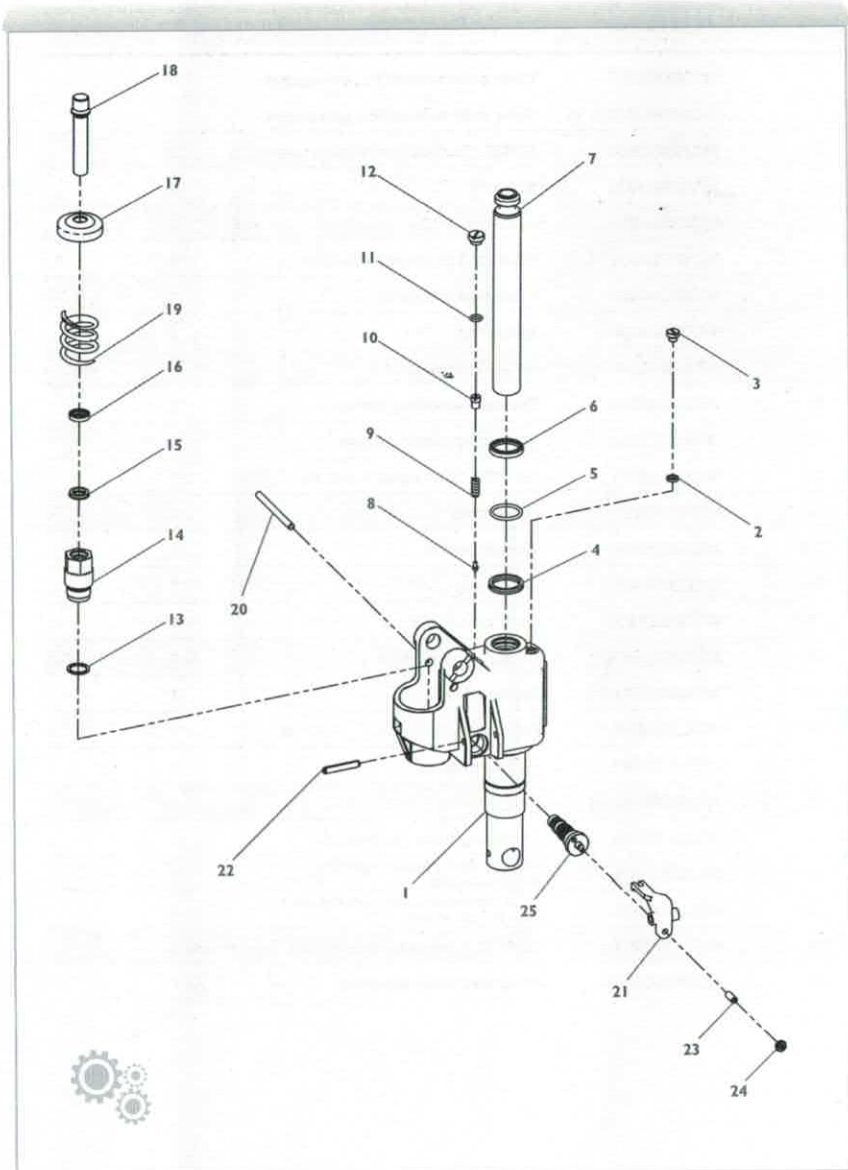
Note: Marked with "\*" are double wheel parts

| NO. | Parts number | Description                  | Qty. |
|-----|--------------|------------------------------|------|
| 1   | WJ10800014   | Handle welded                | 1    |
| 2   | WJ10800015   | Clamping roller              | 1    |
| 3   | WJ10800016   | Roller pin                   | 1    |
| 4   | WJ10800011   | Finger grip handle           | 1    |
| 5   | WJ10800006   | Spring type pin (5)          | 1    |
| 6   | WJ10800003   | Spring type pin (6)          | 1    |
| 7   | WJ10800004   | Spring type pin (7)          | 1    |
| 8   | WJ10800020   | Locking nut                  | 1    |
| 9   | WJ10800002   | Spring type pin (9)          | 1    |
| 10  | WJ10800008   | Positioning plate            | 1    |
| 11  | WJ10800012   | Connecting sheet of pull rod | 1    |
| 12  | WJ10800013   | Pull rod                     | 1    |
| 13  | WJ10800018   | Chain                        | 1    |
| 14  | WJ10800019   | Adjusting bolt               | 1    |
| 15  | WJ10800005   | Spring type pin (15)         | 1    |
| 16  | WJ10800017   | Bushing                      | 1    |
| 17  | WJ10800009   | Torsion spring               | 1    |
| 18  | WJ10800010   | Plastic roller               | 1    |





| NO. | Parts number | Description  | Qty. |
|-----|--------------|--|------|
| 1   | WC02000157   | Valve body welded(75), galvanized                            | 1    |
|     | WC02000033   | Valve body welded(85), galvanized                            | 1    |
| 2   | WC02000060   | GB982, Combination sealing gasket 10                         | 1    |
| 3   | WC02000036   | Screw  | 1    |
| 4   | WC02000061   | Seal ring UHS35  | 1    |
| 5   | WC02000059   | GB3452.1,O-ringφ34.5x3.55                                    | 1    |
| 6   | WC02000058   | Dustproof ring DH35  | 1    |
| 7   | WC02000035   | Piston rod   | 1    |
| 8   | WC02000045   | Safety valve spool   | 1    |
| 9   | WC02000046   | Pressure adjusting spring                                    | 1    |
| 10  | WC02000038   | Pressure adjusting screw                                     | 1    |
| 11  | WC02000071   | GB3452.1,O-ring φ11.2x2.65                                   | 1    |
| 12  | WC02000037   | Screw plug   | 1    |
| 13  | WC02000044   | Copper gasket  | 1    |
| 14  | WC02000039   | Pump body  | 1    |
| 15  | WC02000064   | Seal ring UHS18  | 1    |
| 16  | WC02000063   | Dustproof ring DH18  | 1    |
| 17  | WC02000042   | Spring cover   | 1    |
| 18  | WC02000041   | Pump core  | 1    |
| 19  | WC02000043   | Pressure spring  | 1    |
| 20  | WC02000040   | Pin  | 1    |
| 21  | WC02000049   | Unloading plate, galvanized                                  | 1    |
| 22  | WE06000005   | GB879.1, Spring type straight pin 8x50, blackening           | 1    |
| 23  | WE03000003   | Gb73, Slotted set screws with flat point M8 x 20, galvanized | 1    |
| 24  | WE04000003   | GB6172.1, Hexagon thin nut M8, galvanized                    | 1    |
| 25  | WC01000046   | Integrated valve assembly                                    | 1    |



| NO. | Parts number | Description  | Qty. |
|-----|--------------|--|------|
| 1   | WC02000051   | Push pin sleeve  | 1    |
| 2   | WC02000065   | GB3452.1,O-ring $\phi$ 15.2x2.4                        | 1    |
| 3   | WC02000067   | GB3452.1,O-ring $\phi$ 8x1.8                           | 2    |
| 4   | WC02000053   | Return valve sleeve                                    | 1    |
| 5   | WC02000066   | GB3452.1,O-ring $\phi$ 9.5x1.8                         | 1    |
| 6   | WC02000050   | Stem   | 1    |
| 7   | WC02000052   | Unloading spring                                       | 1    |
| 8   | WC02000054   | O-ring retainer II                                     | 1    |
| 9   | WC02000069   | GB308,Steel ball S7                                    | 1    |
| 10  | WC02000070   | Liquid inlet valve sleeve                              | 1    |
| 11  | WE06000006   | GB117, Copper taper pin 2 x 5                          | 2    |
| 12  | WC02000055   | O-ring retainer I                                      | 1    |
| 13  | WC02000062   | GB3452.1,O-ring $\phi$ 13.2x2.4                        | 1    |
| 14  | WC02000048   | Spring leaf  | 1    |
| 15  | WE03000002   | GB818,Pan head screw with cross recess M2x2,galvanized | 1    |
| 16  | WC02000056   | Boost valve spool                                      | 1    |
| 17  | WC02000057   | Spool spring   | 1    |
| 18  | WC02000047   | Blind nut  | 1    |
| 19  | WC02000068   | GB3452.1,O-ring $\phi$ 21.2x2.65                       | 1    |

